

# *Configuring the ASP-MG24TDB for Ethernet*



- 1 Connect to the ASP-MG24TDB using USB or RS-232 as described in the Quick Start Guide.
- 2 Log in and open the Main control page.
- 3 From the main screen select the "Device Control" button. (Figure 1)

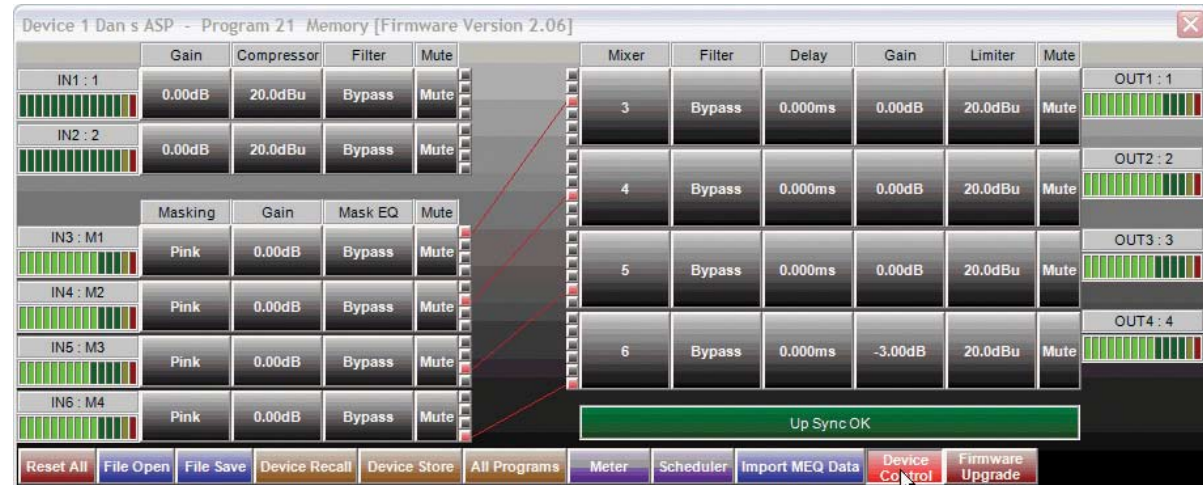


Figure 1

- 4 Fill in the following information Supplied by the Network Administrator. (Figure 2)
  - a. Device Name
  - b. IP Address
  - c. Gateway
  - d. Subnet Mask

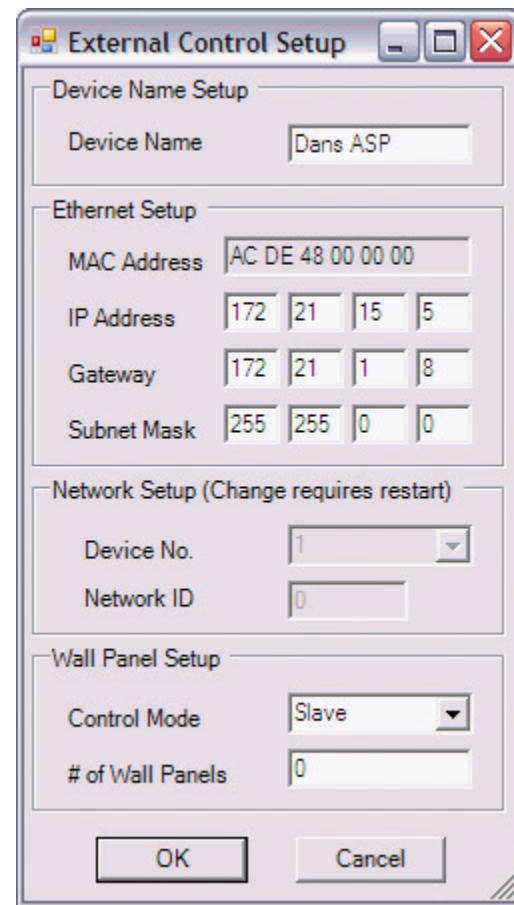


Figure 2

- 5 From the Setup drop down on the main screen select "Port Connection". (Figure 3)

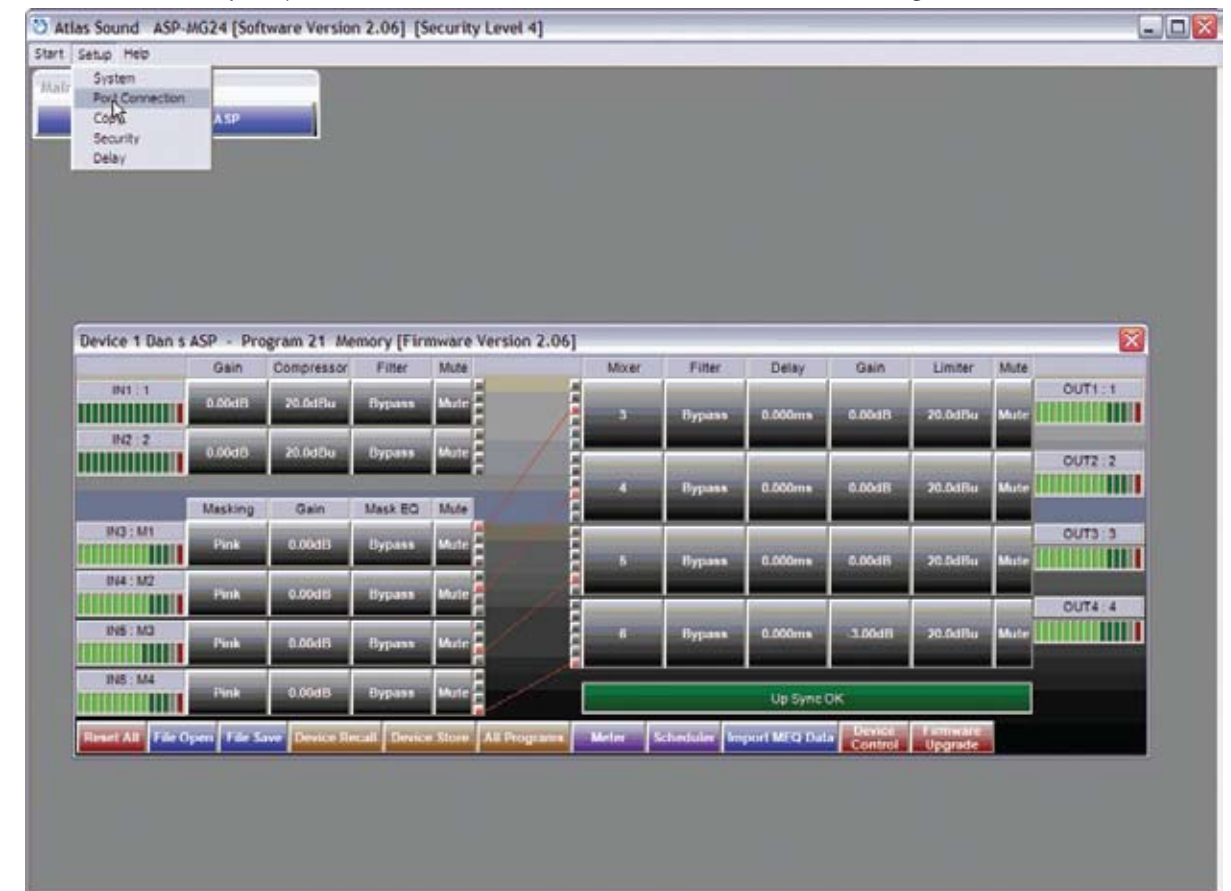


Figure 3

- 6 In the Type drop down box select "CAT-5 Ethernet" and enter the same IP Address used in step 4. (Figure 4)

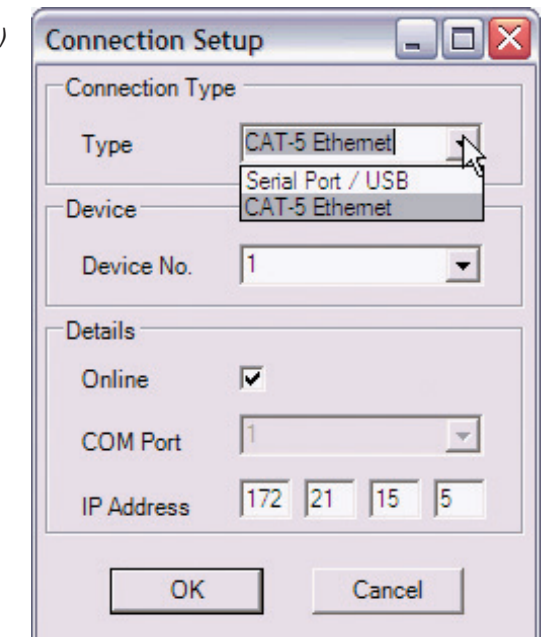


Figure 4

7 When OK is selected from Step 6 a notice will prompt to restart the program. (Figure 5)

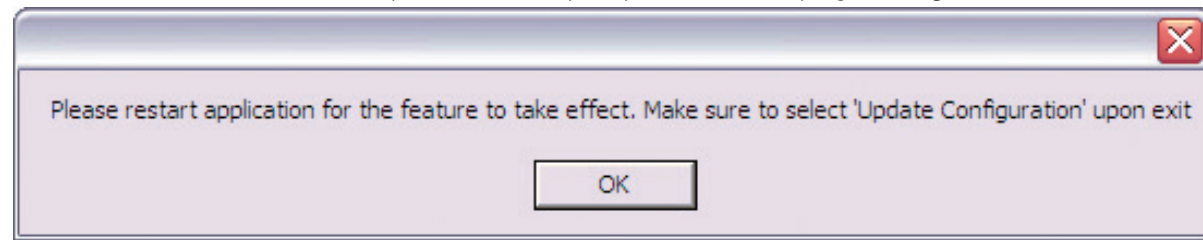


Figure 5

8 Exit the ASP-MG24TDB Software and Select "Yes" in the confirmation box. (Figure 6)

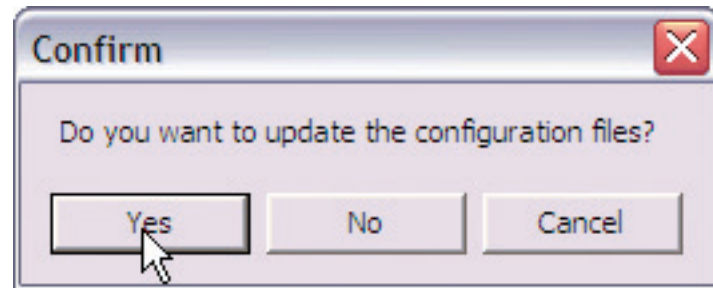


Figure 6

9 Connect the ASP-MG24TDB Ethernet Control Port to the Local Area Network.

10 Restart APS-MG24 software and log in as normal. After a few seconds you should see the DATA light on the ASP-MG24TDB illuminate.

11 The unit is now connected via Ethernet.

ASP-MG24TDB WAN Configuration

Configuring the ASP-MG24TDB for access through the internet

First, let's define the network:

IN FRONT OF the router is a single "Public" IP Address. This is the address that is visible to the outside world.

BEHIND the router are multiple computers/printers/switches/ASP-MG24's/etc. ("Nodes") with "Private" IP Addresses. These addresses are not visible to the outside world, and begin with "10.x.x.x", "172.x.x.x", or "192.168.x.x".

When a network is first set up, all "Ports" in front of the router are directed to the router itself. These are typically ignored by default, so all ports in front of the router lead nowhere. Ports can also be FORWARDED to an IP address behind the router. This is known as "Port Forwarding", or "Destination NAT".

Here's an example network configuration

- On the Local Area Network find the Public IP Address – Go to <http://www.ipchicken.com>. Example Public IP Address is: 70.182.63.146
- The example Private IP Address on this network is 192.168.1.x. The ASP-MG24 address is set to 192.168.1.101.
- On the example Linksys router, Navigate to set up Applications & Gaming Port Range Forwarding so that TCP Port 10001 forwards to 192.168.1.101.
- From another computer (on a different network altogether), Open up the ASP-MG24TDB software, click "Setup Port Connection", changed the IP Address to 70.182.63.146 and logged on. (Refer to the ASP-MG24TDB Ethernet Configuration above)

Each router is different. Cisco routers take much more understanding to program, but they are just as capable of forwarding ports to internal IP addresses.

Please contact Atlas Sound 800-876-3333 for more information.



1601 Jack McKay Blvd. Ennis, Texas 75119 U.S.A.

Telephone: 800.876.333 Fax: 800.765.3435

## Free Manuals Download Website

<http://myh66.com>

<http://usermanuals.us>

<http://www.somanuals.com>

<http://www.4manuals.cc>

<http://www.manual-lib.com>

<http://www.404manual.com>

<http://www.luxmanual.com>

<http://aubethermostatmanual.com>

Golf course search by state

<http://golfingnear.com>

Email search by domain

<http://emailbydomain.com>

Auto manuals search

<http://auto.somanuals.com>

TV manuals search

<http://tv.somanuals.com>