

**Access Controller
AMC-4W**

EN Configuration Software

Bosch Security Systems | V1.0/2005-07

BOSCH

Trademarks

Bosch is a registered trademark of Bosch Security Systems in the United States and/or other countries.

Remarks



This hardware is part of a security system. Access is limited to authorized persons.

Some states do not allow the exclusion or limitation of implied warranties, or limitation of liability for incidental or consequential damages, so the above limitation or exclusion might not apply to you.

Bosch Security Systems retains all rights which are not granted explicitly. Nothing in this license constitutes a waiver of Bosch's rights under the U.S. Copyright laws or any other Federal or state law.

If you have any questions concerning this license, please write to:

Bosch Access Systems GmbH
Adenauerstr. 20 / A3
D-52146 Würselen
Germany.

Contents

1.	Please Observe the Following Notes.....	4
1.1.	Explanation of Used Symbols	4
1.2.	Internet.....	4
1.3.	We Are Interested in Your Opinion.....	4
2.	Description of the AMC-4W	5
3.	Operating the AMC-4	7
3.1.	Status Display of the AMC-4	7
3.2.	Configuring the Ethernet Interface	8
3.2.1.	Starting the AmcIpConfig Application.....	9
3.2.2.	Scanning of Local Area Network for AMC-4W Devices.....	9
3.2.3.	Configuration of an AMC-4	10
4.	List of Figures	12
5.	Index	12

1. Please Observe the Following Notes

1.1. Explanation of Used Symbols

Throughout this document, helpful tips, important notes, cautions and warnings are presented differently. Their appearance is as follows:



Warning!

These warn the operator that serious damage to persons or the equipment might occur.



Important Notes — should be followed for successful operation and programming. Tips and shortcuts might also be included here.



Cross Reference

Please, refer to the referenced document or chapter to obtain additional information about the topic.

1.2. Internet

If you need further information on this product or information on other products, please refer to our website at <http://www.boschsecurity.com>.

1.3. We Are Interested in Your Opinion

We constantly try to improve the quality of our products and our manuals. Should you have any suggestions for improvement, please, send us your comments.

Bosch Security Systems
Adenauer Straße 20 / A3
52146 Würselen
Germany

Tel.: +49 24 05 / 60 05-0
Fax: +49 24 05 / 60 05-29
Email: info.service@de.bosch.com

2. Description of the AMC-4W

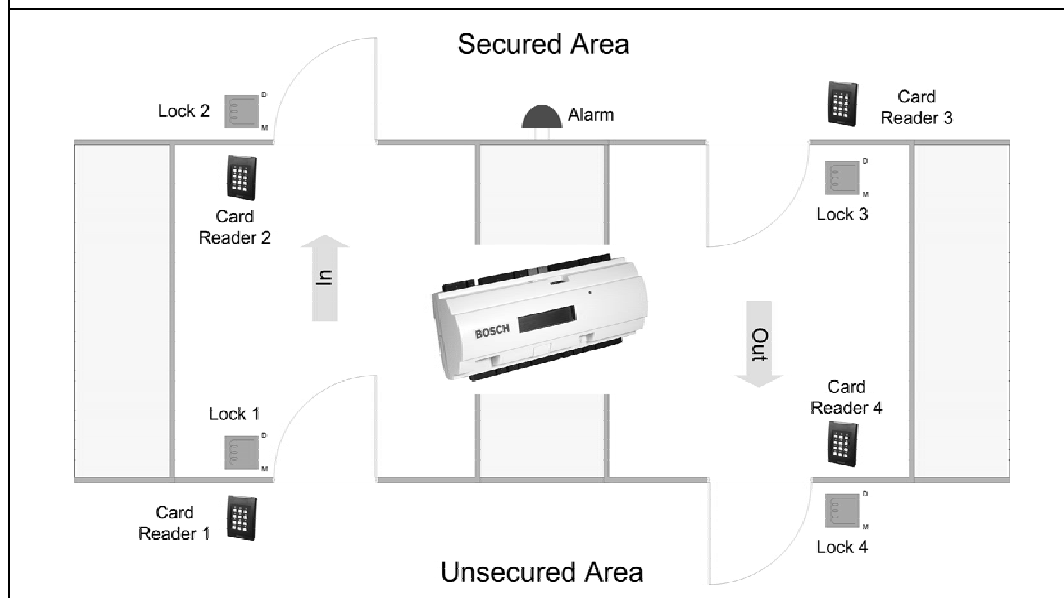
The AMC-4W is able to control directly up to four doors, each with one reader in one direction only or 2 doors with a reader in each direction. For this purpose the AMC-4W is equipped with four independent interfaces for Wiegand type readers.

Figure 1: The Access Controller AMC-4W



All necessary information for access verification is stored in a battery buffered on-board memory and a Compact Flash Memory Card. This guarantees autonomous access decisions and complete access registrations even if the management host system is offline. The built in compact flash adapter provides de facto unlimited storage for cardholders and events, simply by exchanging the standard compact flash card with one with 128 MB, 256 MB, 512 MB or 1 GB capacity.

Figure 2: The AMC-4W in a four door safety lock



The AMC-4W can communicate upstream to the host computer via eight RS485 multi-dropped, RS232 or 10/100 MBit Ethernet. It has eight analog inputs eight relay outputs. With its analog input devices, the AMC-4W verifies if a lock is closed or open. The relay outputs can be used to activate lock mechanisms if access is granted, or activate an external alarm system if an intrusion or system alert is detected.

The AMC-4W provides an IP protocol stack completely developed by Bosch. There are no third party operating systems and there is no vulnerability by viruses. The AMC-4W electronic is completely covered by a plastic housing and the LC Display gives all important status information.

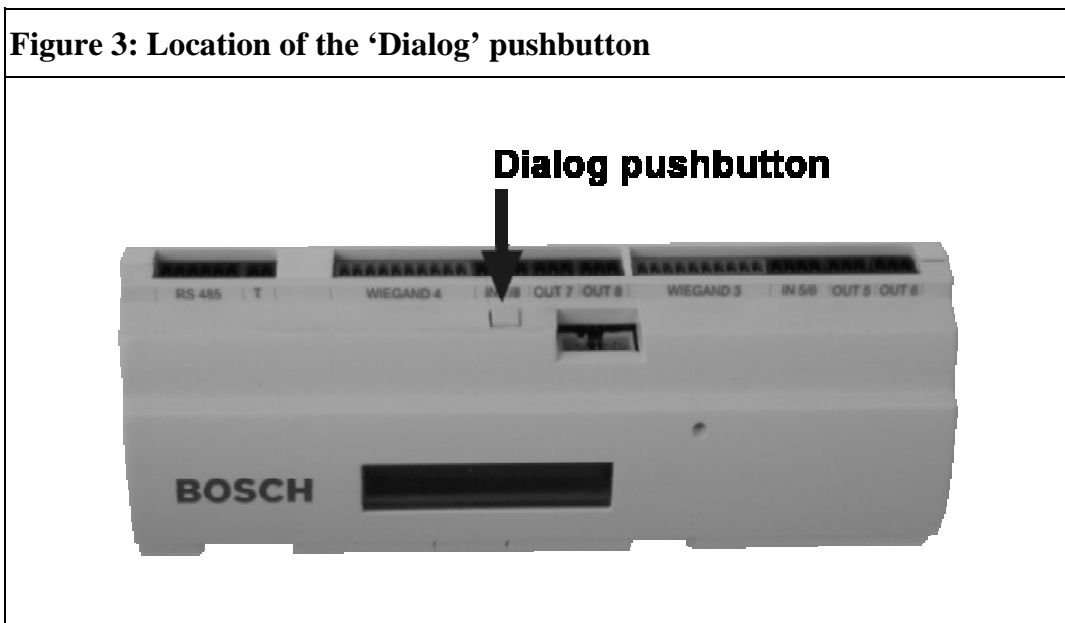
The setup procedure for an AMC-4W is very simple and extremely fast due to the use of door templates. As soon as the template is selected all the inputs and outputs are defined.

Using the AMC-4W gives you the full functionality and the offline capability of a complete access control system on each room. This leads to an excellent reliability and a very high redundancy without paying extra money.

3. Operating the AMC-4

3.1. Status Display of the AMC-4

While operating the LCD display delivers information about the AMC-4 status. Push the 'Dialog' pushbutton to switch between the different modes.



The currently set display mode remains until the next operation of the 'dialog' pushbutton.

Push	Display:	Description:
------	----------	--------------

Push	Display:	Description:
0	v00.35 02.05.05	Software version of the downloader
1	99999876543210 A	Bosch serial number and bus address A = address 1 B = address 2 C = address 3 D = address 4 E = address 5 F = address 6 G = address 7 H = address 8
2	02.05 15:35:15	Current date and time
3	Mac 0010174C8A0C	MAC address
4	Na	Network name
5	I192.168.10.18	IP address of the AMC-4
6	H0.0.0.0	IP address of the host
7	DHCP 1	DHCP - 1 = on - 0 = off
8	D192.168.10.1	IP address of the DNS server
9	Host: -	Host activity, + online - offline

3.2. Configuring the Ethernet Interface

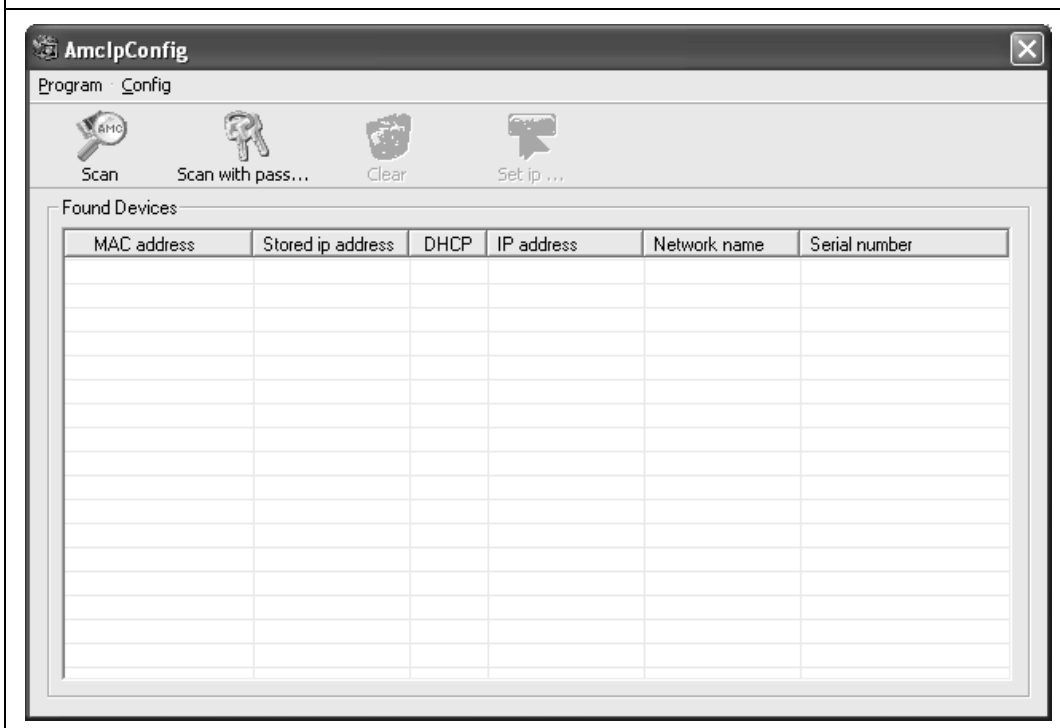
To configure the AMC-4W in a TCP/IP network environment use the software Windows tool **AmcIpConfig** delivered in the tools directory of the provided CD.

This application checks your local network for all available AMC-4 devices and returns their current status. Then it configures an AMC-4W such that it integrates in your TCP/IP network configuration.

3.2.1. Starting the AmcIpConfig Application

1. Click on the Windows 'Start' menu
2. Click 'Execute'.
3. Click 'Browse'.
4. Select the tools folder of the AMC-4W CD and search for the application **AmcIpConfig.exe**.
5. Select **AmcIpConfig.exe** and click on 'Open'.
6. Click 'OK' to start the application.

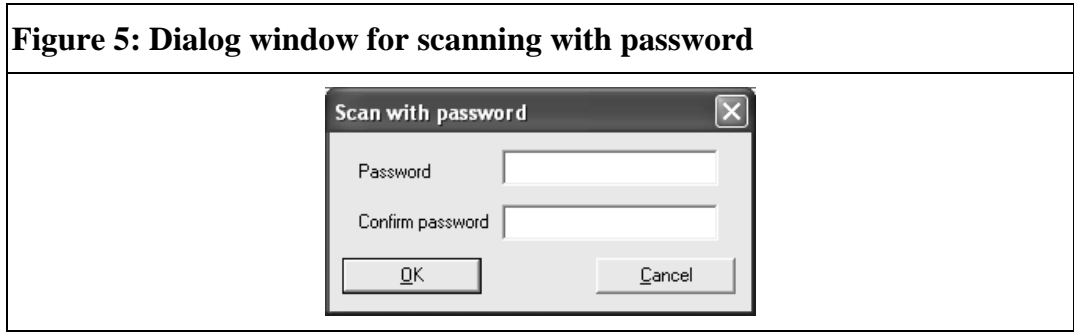
Figure 4: The AmcIpConfig application



3.2.2. Scanning of Local Area Network for AMC-4W Devices

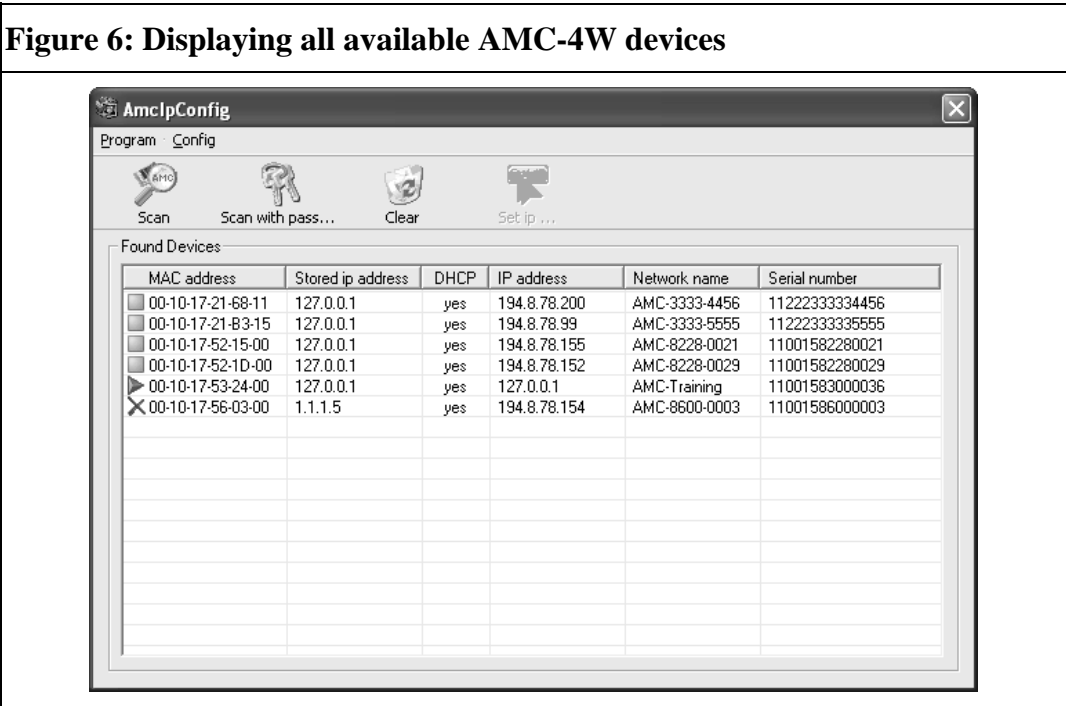
To scan your local area network for available AMC-4W devices click on the **Scan** symbol in the toolbar or select **Scan** in the **config** menu. If you want

change AMC-4W with password protection use **Scan with pass...** instead of Scan. In this case you must enter the password for your AMC-4W.



The application scans your local area network for all available AMC-4W devices and displays their MAC-addresses, stored IP-addresses, DHCP status, IP-Address, device name and serial number in the table. The AMC-4 is marked as follows:

- not password protected (only if you scan with password)
- password matched
- protected with unknown password

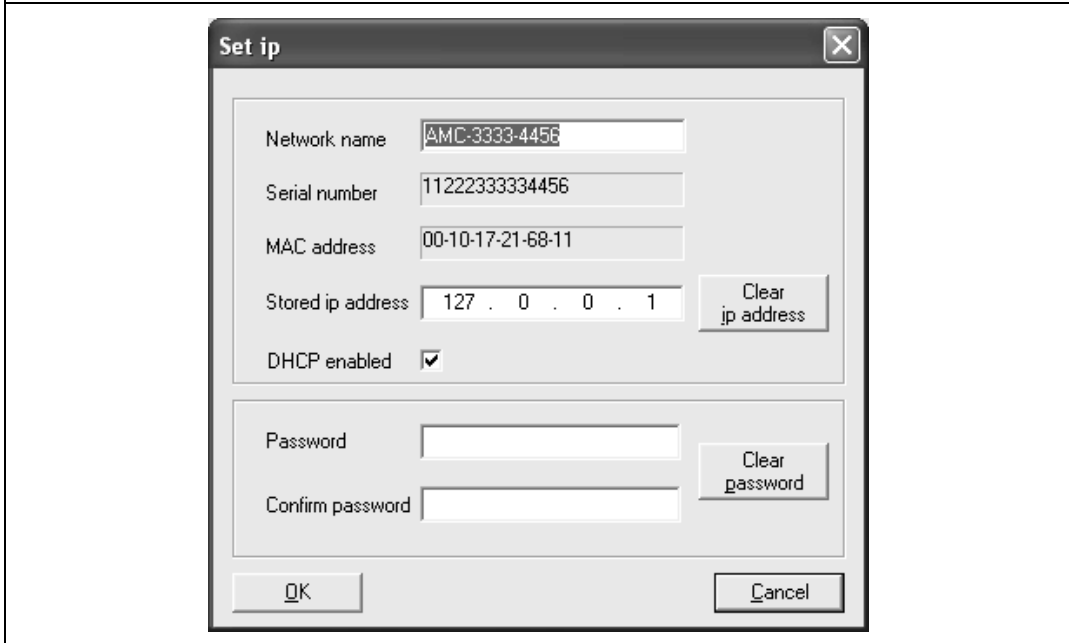


3.2.3. Configuration of an AMC-4

1. Select the AMC-4W that you want to configure. The designated device is now highlighted.

2. Click on the **Set IP** button in the toolbar or select the menu item **IP Config** in the menu bar or double click on the highlighted item.
3. The configuration dialog opens.

Figure 7: Configuration dialog



4. Select a unique name to identify the AMC-4 in the list of devices.
5. Serial number and MAC address of the AMC-4 are predefined and cannot be changed.
6. Select a fixed IP address for the AMC-4 device. If you're not sure which address to fill in, please, ask your local system administrator.
7. If a DHCP server is available in your local area network, you can select the **DHCP enabled** checkbox to assign an IP address automatically.
8. If you want the AMC-4W to be protected by a password, enter the password and its confirmation.
9. Click on **Ok** to confirm these settings.

4. List of Figures

Figure 1: The Access Controller AMC-4W	5
Figure 2: The AMC-4W in a four door safety lock.....	6
Figure 3: Location of the ‘Dialog’ pushbutton.....	7
Figure 4: The AmcIpConfig application	9
Figure 5: Dialog window for scanning with password	10
Figure 6: Displaying all available AMC-4W devices	10
Figure 7: Configuration dialog.....	11

5. Index

AmcIpConfig Application	10	Local Area Network.....	11
Appendix.....	13	Operating the AMC-4.....	8
Configuring the Ethernet Interface	9	Status Display.....	8
Description of the AMC-4	5	Used Symbols.....	4
Internet.....	4		

Free Manuals Download Website

<http://myh66.com>

<http://usermanuals.us>

<http://www.somanuals.com>

<http://www.4manuals.cc>

<http://www.manual-lib.com>

<http://www.404manual.com>

<http://www.luxmanual.com>

<http://aubethermostatmanual.com>

Golf course search by state

<http://golfingnear.com>

Email search by domain

<http://emailbydomain.com>

Auto manuals search

<http://auto.somanuals.com>

TV manuals search

<http://tv.somanuals.com>