

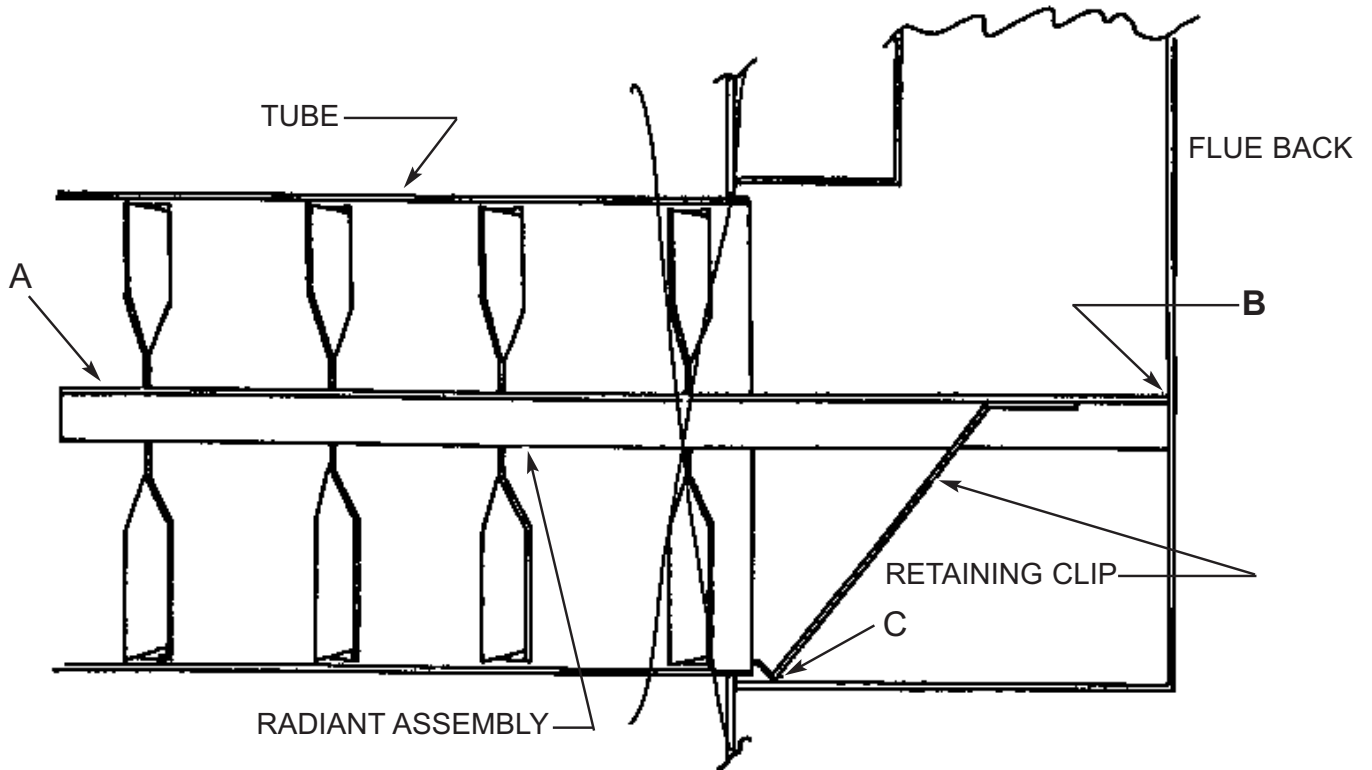
# SERVICE INSTRUCTIONS

www.keatingofchicago.com

**KEATING**  
OF CHICAGO, INC. ®

1-800-KEATING

## INSTRUCTIONS FOR INSERTING AND REMOVING RADIANTS



1. To remove radiant assembly remove the burners from the manifold then grip the end of the radiant angle bar at point "A" and pull forward and out of the tube.
2. To install radiant assembly insert the end with the retaining clip in the tube first. Make sure that the end of the clip is bent below the bottom of the radiant fins.
3. Push the assembly back as far as it will go until the rear end of angle bar is against the flue back at "B".
4. As the assembly is inserted make sure that the fins are not bent out of perpendicular with the radiant angle bar.

APR-96

## Free Manuals Download Website

<http://myh66.com>

<http://usermanuals.us>

<http://www.somanuals.com>

<http://www.4manuals.cc>

<http://www.manual-lib.com>

<http://www.404manual.com>

<http://www.luxmanual.com>

<http://aubethermostatmanual.com>

Golf course search by state

<http://golfingnear.com>

Email search by domain

<http://emailbydomain.com>

Auto manuals search

<http://auto.somanuals.com>

TV manuals search

<http://tv.somanuals.com>