

**INSTALLATION INSTRUCTIONS FOR CONVERTING FROM PROPANE GAS (LP) TO
NATURAL GAS (NG). FOR USE WITH THE DESIGNER™ DIRECT VENT GAS FIREPLACE INSERTS**

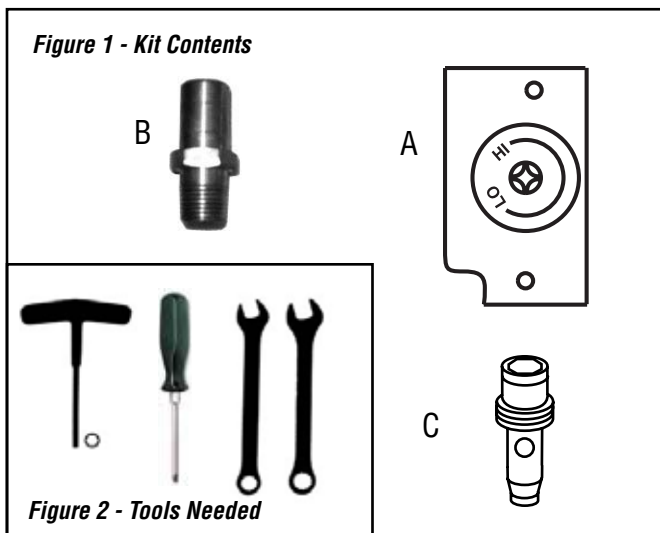
ELITE™ SERIES

KIT CONTENTS (See Figure 1):

- 1 ea. Robertshaw NG Regulator Kit (A)
- 1 ea. #37 NG main burner orifice (30,000 BTU's) (B)
- 1 ea. Nova SIT NG pilot orifice (C)
- 1 ea. Instruction Sheet

TOOLS NEEDED (See Figure 2):

- 5/32" Allen Wrench Or T-Handle Wrench
- #2 Phillips Screwdriver
- 1/2" Open End Wrench



! WARNING

This conversion kit shall be installed by a qualified service agency in accordance with the manufacturer's instructions and all applicable codes and requirements of the authority having jurisdiction. If the information in these instructions is not followed exactly, a fire, explosion or production of carbon monoxide may result causing property damage, personal injury or loss of life. The qualified service agency performing this installation is responsible for the proper installation of this kit and assumes responsibility for this conversion. The installation is not proper and complete until the operation of the converted appliance is checked as specified in the manufacturers instructions supplied with the kit.

! AVERTISSEMENT

Cet équipement de conversion sera installé par une agence qualifiée de service conformément aux instructions du fabricant et toutes exigences et codes applicables de l'autorisés avoir la juridiction. Si l'information dans cette instruction n'est pas suivie exactement, un feu, explosion ou production de protoxyde de carbone peut résulter le dommages causer de propriété, perte ou blessure personnelle de vie. L'agence qualifiée de service est esponsable de l'installation propre de cet équipement. L'installation n'est pas propre et complète jusqu'à l'opération de l'appareil converti est chèque suivant les critères établis dans les instructions de propriétaire provisionnées avec l'équipement.

! IMPORTANT CANADA

The conversion shall be carried out in accordance with the requirements of the provincial authorities having jurisdiction and in accordance with the requirements of the CAN/CSA B149.1 Installation code.

! IMPORTANT LE CANADA SEULEMENT

La conversion devra être effectuée conformément aux recommandations des autorités provinciales ayant juridiction et conformément aux exigences du code d'installation CAN/CSA B149.1 .

! IMPORTANT

The burner orifices provided in this kit are only for use at elevations of 0 to 2,000 feet (610 M) in the USA and 0 to 4,500 feet (0-1372 M) in Canada. At higher elevations the BTU input must be de-rated by 4% for every 1,000 feet (305 M) to maintain the proper ratio of gas to air. If the installer must convert the unit to adjust for varying altitudes, a deration information sticker must be filled out by the installer and adhered to the appliance at the time of the conversion. Contact your local gas supplier for deration requirements for your area.

READ ALL THE STEPS BEFORE STARTING THE CONVERSION. INSTALLER NOTICE: THESE INSTRUCTIONS MUST BE LEFT WITH THE APPLIANCE.

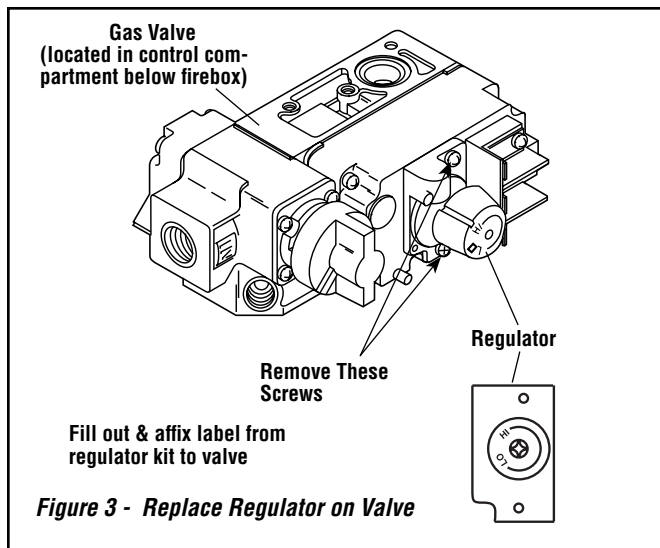
This kit contains components required to convert this appliance from using Propane Gas to using Natural Gas as the only fuel. All of these components must be replaced in order for the unit to operate safely on Natural Gas.

When installing gas components use pipe joint compound or Teflon tape on all pipe fittings before installing (ensure propane resistant compounds are used, do not use pipe joint compounds on flare fittings).

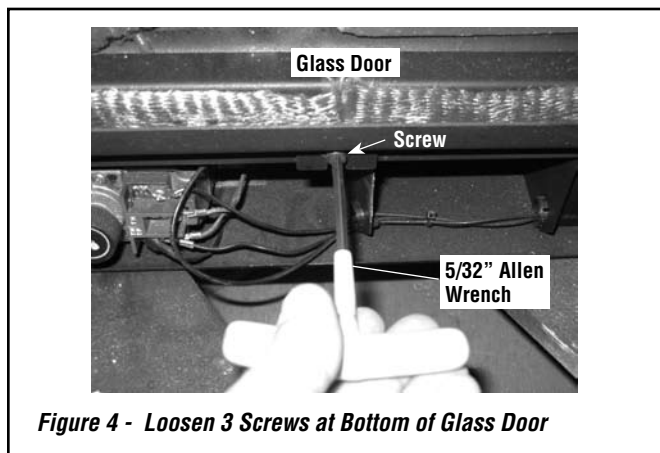
INSTALLATION INSTRUCTIONS

Step 1. TURN OFF THE GAS SUPPLY TO THE APPLIANCE.

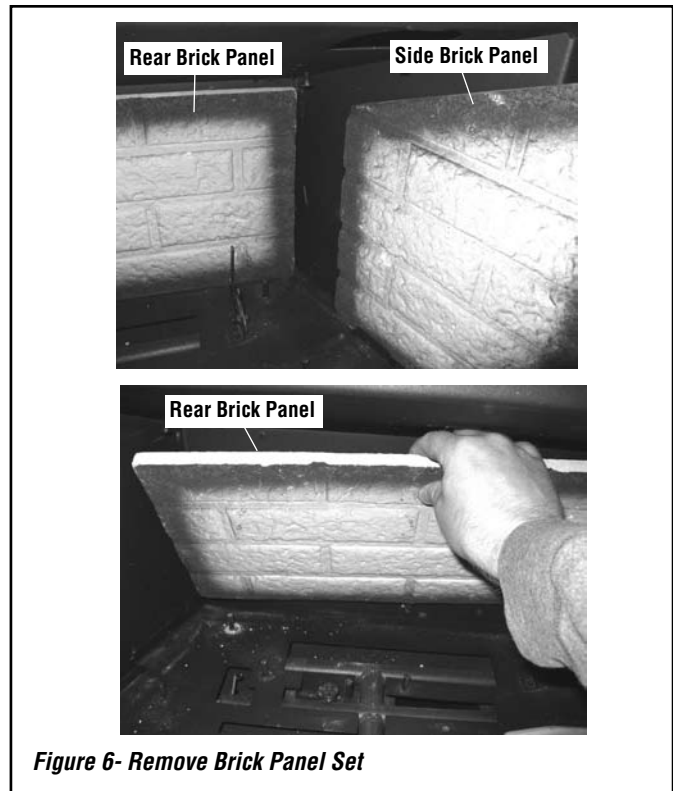
Step 2. Using a phillips screwdriver, remove and discard the two pressure regulator mounting screws (see **Figure 3**). Remove the pressure regulator and rubber gasket. Discard all removed components. Install the new regulator. Ensure the rubber gasket on the back of the pressure regulator is properly positioned when installing the new pressure regulator using the new screws supplied with this kit. Locate the label provided in the regulator kit. Write in the required information, then affix it to the valve.



Step 3. Using a 5/32" allen wrench, remove the glass door by first loosening the three screws along the bottom (see **Figure 4**). Next remove the two top screws and lift the glass off the three screws below (see **Figure 5** and **Page 19** of the *Installation and Operation Manual*). Carefully remove the logs. Exercise care so as not to break the logs. Set aside in a safe place.



Step 4. Carefully lift out the three brick panels (see **Figure 6**).



Step 5. Remove the log set support by removing the two 5/32" allen head screws located at the front edge. See **Figure 7**.



Step 6. To remove burner, unscrew the 5/32" allen head screw, securing the right end of the burner. See **Figure 8**.

Step 7. Next, push the air shutter control lever in until it stops. See **Figure 9**.

Step 8. Slide burner to the right until it comes off the burner orifice. Lift the right end of burner until it releases from the copper rod. See **Figure 10**.

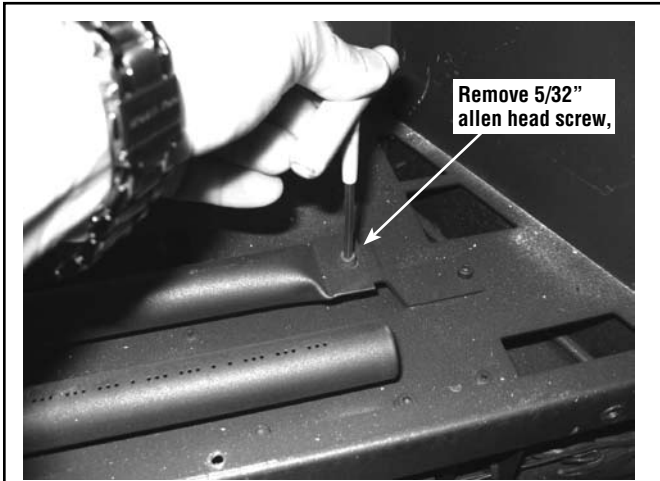


Figure 8 - Remove Screw From Burner

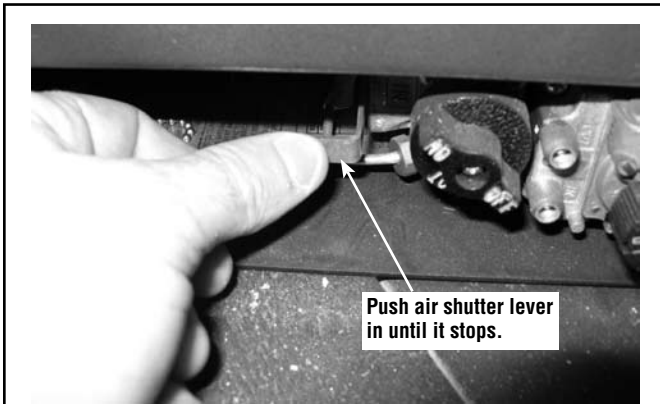


Figure 9 - Push In Shutter Lever

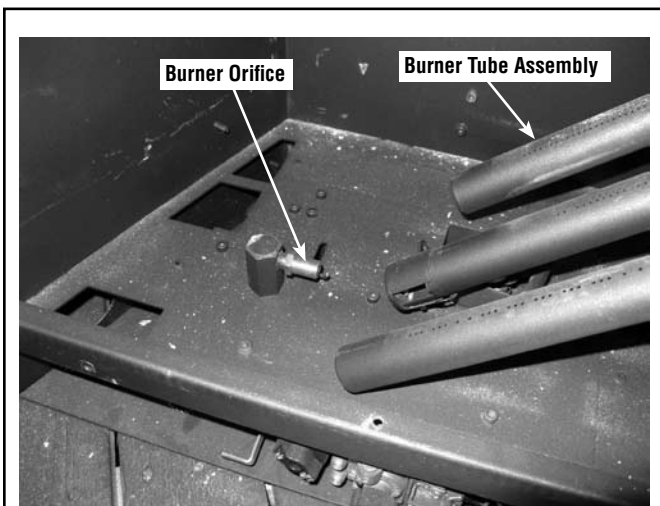


Figure 10 - Remove Burner

Step 9. Firmly pull the pilot hood straight up and off to access the hexed pilot orifice (see **Figures 11 and 13**). Use a 5/32" allen head wrench to unscrew the pilot orifice and lift it out (see **Figures 12 and 13**). Replace with the new NG pilot orifice provided. Re-install the pilot hood. **Note: The raised part of the pilot bottom lines up with the notch in the pilot hood (see Figure 13).**

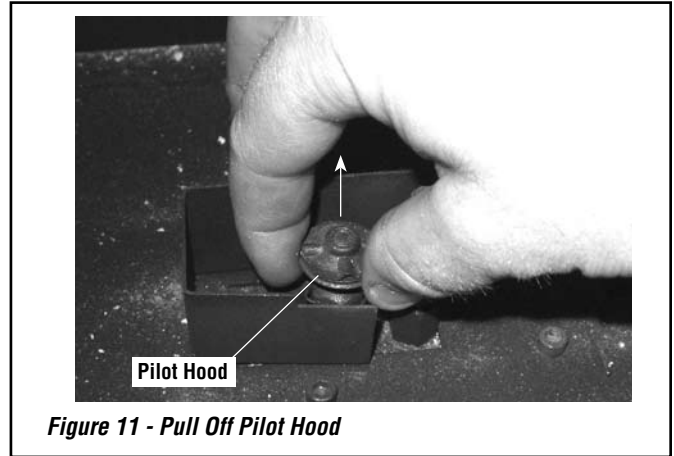


Figure 11 - Pull Off Pilot Hood

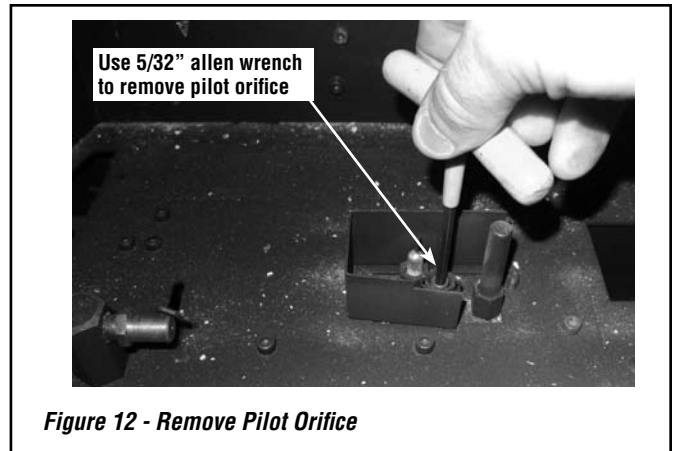


Figure 12 - Remove Pilot Orifice

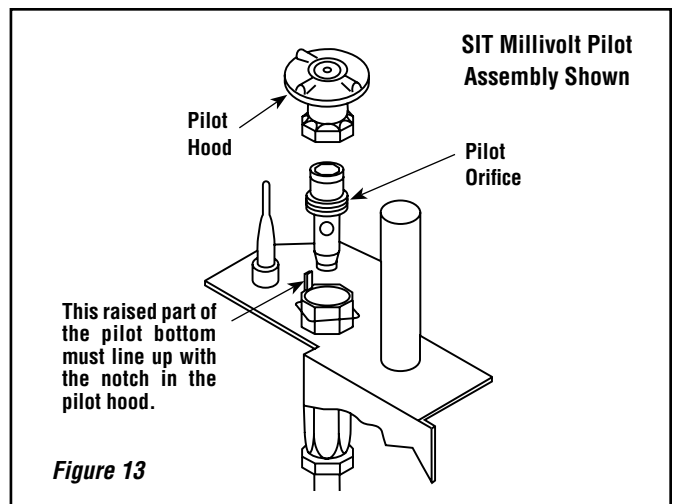


Figure 13

Step 10. Using 1/2" open end wrench, remove the LP burner orifice. Install the new NG orifice. Make sure to use pipe sealing compound on threads of the new orifice (see **Figure 14**).

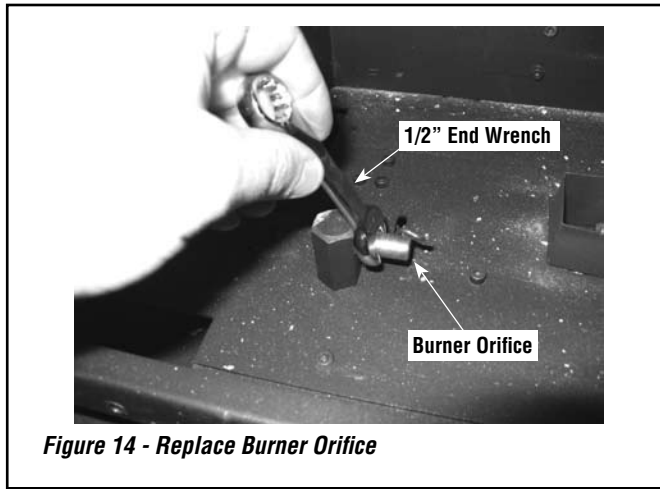


Figure 14 - Replace Burner Orifice

Step 11. Install burner, and make sure air shutter is 1/8" open (see instructions on **Page 13** of the *Installation and Operation Manual*). After step 15, with the appliance lit and fully warmed up, evaluate the burner flame appearance and re-adjust air shutter for proper flame appearance, if necessary.

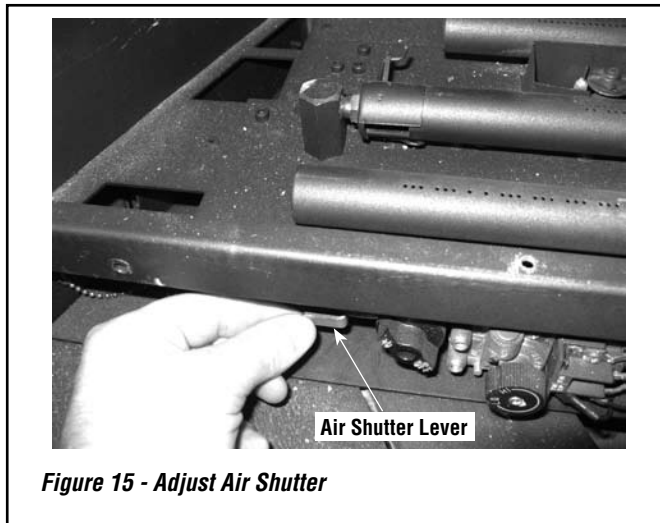


Figure 15 - Adjust Air Shutter

Step 12. Turn on gas supply and test for gas leaks using a gas leak test solution (see *Test Procedure on Page 12* of the *Installation and Operation Manual*).

Step 13. Using a manometer, test the inlet and manifold gas pressure per instructions in the *Installation and Operation Manual (Page 12)* and as shown in the following 2 tables.

Inlet Gas Supply Pressure			
Fuel #	Minimum	Maximum	Desired
Nat. Gas	5" WC/po. C.E (1.24 kPa)	10.5" WC/po. C.E (2.61 kPa)	7" WC/po. C.E (1.74 kPa)

Manifold Gas Supply Pressure		
Fuel #	Low	High
Natural Gas	(Lo) 1.7" WC/po. C.E (0.42 kPa)	(Hi) 3.5" WC/po. C.E (0.87 kPa)

Step 14. Reinstall the burner, log set support, log set and glass door assembly. See **Pages 9 and 10** (*Log Set Installation*) and **Page 19** (*Door Assembly Installation*) in the *Installation and Operation Manual*.

Step 15. Light the appliance per the lighting instructions label on appliance (located below glass door) or lighting instructions on **Page 14** in the *Installation and Operation Manual*. Inspect for proper pilot and burner flame appearances. See *Flame Color and Behavior on Page 15* and *Inspect The Pilot System For Proper Flame on Page 16* in the *Installation and Operation Manual*. Also see **Figures 16 and 17** on this page.

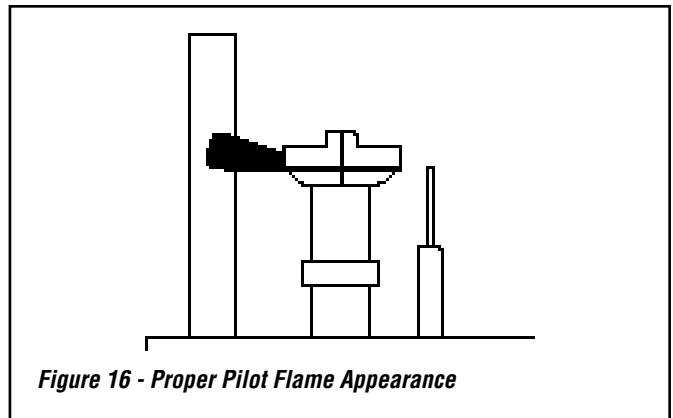


Figure 16 - Proper Pilot Flame Appearance

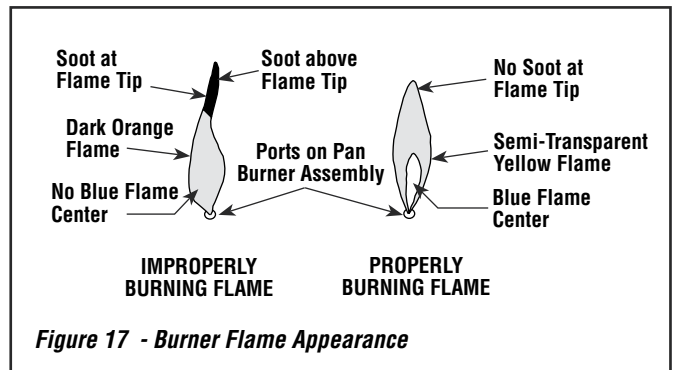


Figure 17 - Burner Flame Appearance

NOTE: DIAGRAMS AND ILLUSTRATIONS ARE NOT TO SCALE.

Lennox Hearth Products reserves the right to make changes at any time, without notice, in design, materials, specifications, prices and also to discontinue colors, styles and products. Consult your local distributor for fireplace code information.

LENNOX
HEARTH PRODUCTS

Free Manuals Download Website

<http://myh66.com>

<http://usermanuals.us>

<http://www.somanuals.com>

<http://www.4manuals.cc>

<http://www.manual-lib.com>

<http://www.404manual.com>

<http://www.luxmanual.com>

<http://aubethermostatmanual.com>

Golf course search by state

<http://golfingnear.com>

Email search by domain

<http://emailbydomain.com>

Auto manuals search

<http://auto.somanuals.com>

TV manuals search

<http://tv.somanuals.com>