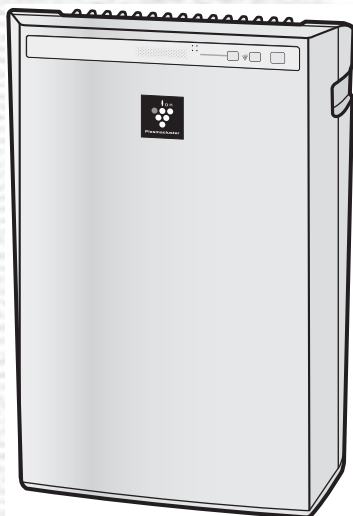


# SHARP®



\*Plasmacluster is a trademark of Sharp Corporation.

\*Plasmacluster adalah Merek Dagang dari Sharp Corporation.



**Free standing type  
Tipe Berdiri**

# FU-Z31E

## AIR PURIFIER OPERATION MANUAL

## PETUNJUK PENGOPERASIAN AIR PURIFIER

ENGLISH

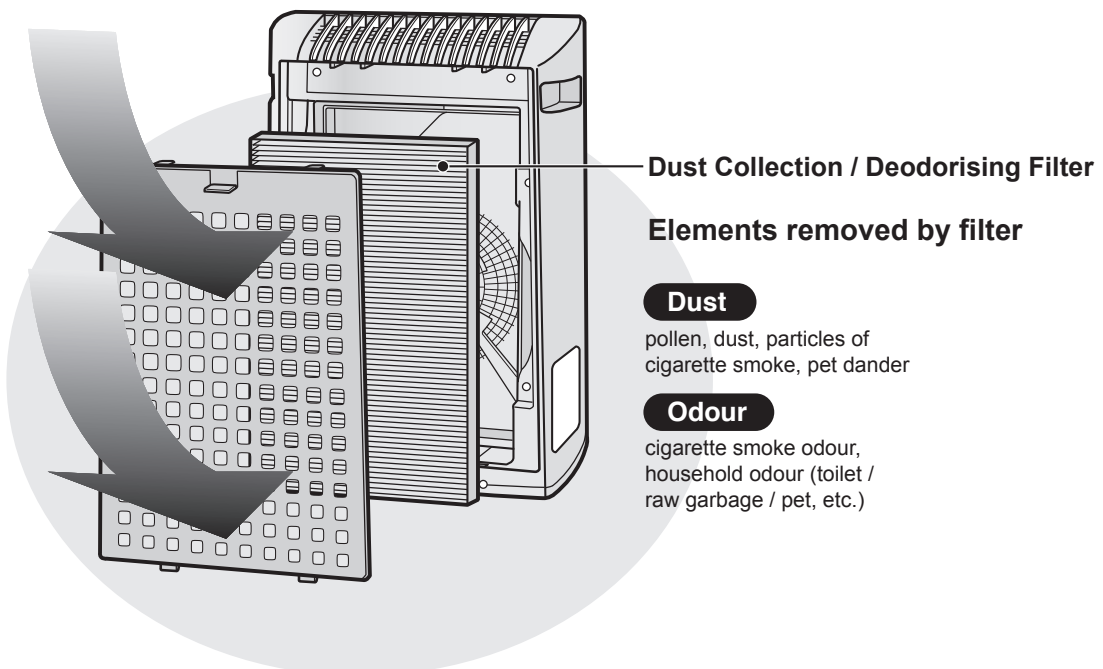
INDONESIA

## Please read before operating your new Air Purifier

Some odour ingredients absorbed by the filter may become separated and may be discharged through the air outlet and result in additional odour. Depending on the usage environment, especially when the product is used in a condition significantly more severe than household use, this odour may become strong in a shorter period than expected. In this case we recommend purchasing the optional replacement filter.

## NOTE

- The air purifier is designed to remove air-suspended dust and odour, but not harmful gases (for example, carbon monoxide contained in cigarette smoke). If the odour sources still exist, it cannot completely remove the odour (for example, odours from construction materials and pet odours).
- It is suggested to open the window a bit when you are smoking in order to facilitate ventilation.



## FEATURES

### "Plasmacluster" technology

Plasmacluster technology uses plasma discharge to produce and release the same positive and negative ions as those found in nature ("Plasmacluster ions").

This is a unique air cleaning technology of the SHARP CORPORATION for breaking down and inactivating such potential allergens as the fecal matter or corpses of aerial mites\*<sup>1</sup>, viruses \*<sup>2</sup> and mould and bacteria \*<sup>3</sup> suspended in the air, and has been substantiated by third-party organisations both in Japan and overseas.

When there is a high density of Plasmacluster ions in the air, the smell of cigarette smoke trapped in curtains or sofas is removed in about 80 minutes\*<sup>4</sup>, and when clothing is hung in a place exposed to the direct air expelled from the unit generating Plasmacluster ions, the smell of sweat is reduced to a virtually imperceptible level in one night (about 6 hours).

\*1 Graduate School of Advanced Sciences of Matter, Hiroshima University, Japan

Measurement of action on the potential allergens of aerial mites in (13m<sup>2</sup>)

\*2 Retroscreen Virology, Ltd., London, UK  
Measurement of ratio of viruses eliminated from the air in a 1m<sup>3</sup> box

\*3 Ishikawa Health Service Association, Japan

Measurement of aerial mold and bacteria with an air sampler (13m<sup>2</sup>)

\*4 Japan Spinners Inspecting Foundation, Japan

Evaluation of deodorizing effect on odor-imbued fragments of cloth

## CONTENTS

<b>IMPORTANT SAFETY INSTRUCTIONS</b> .....	E-2
• WARNING .....	E-2
• CAUTIONS CONCERNING OPERATION ...	E-3
• INSTALLATION GUIDELINES.....	E-3
• FILTER GUIDELINES .....	E-3
<b>PART NAMES</b> .....	E-4
• MAIN UNIT DISPLAY .....	E-4
• ILLUSTRATIVE DIAGRAM.....	E-4
• INCLUDED .....	E-5
• BACK.....	E-5
<b>PREPARATION</b> .....	E-6
• FILTER INSTALLATION .....	E-6
<b>OPERATION</b> .....	E-8
• MAIN UNIT OPERATION .....	E-8
<b>CARE AND MAINTENANCE</b> .....	E-9
• BACK PANEL AND SENSOR.....	E-9
• UNIT .....	E-9
• FILTER REPLACEMENT GUIDELINES.....	E-10
<b>TROUBLESHOOTING</b> .....	E-11
<b>SPECIFICATIONS</b> .....	E-12

Thank you for purchasing the SHARP Air Purifier. Please read this manual carefully for the correct usage information. Before using this product, be sure to read the section: "Important Safety Instructions."

After reading this manual, retain it in a convenient location for future reference.

# IMPORTANT SAFETY INSTRUCTIONS

When using electrical appliances, basic safety precautions should be followed, including the following:

**WARNING** - To reduce the risk of electrical shock, fire or injury to persons:

- Read all instructions before using the unit.
- Use only a 220-240 volt outlet.
- **Do not use the unit if the power cord or plug is damaged or the connection to the wall outlet is loosened.**
- Periodically remove dust from the power plug.
- **Do not insert fingers or foreign objects into the intake or air outlet.**
- **When removing the power plug, always hold the plug and never pull the cord.**

Electrical shock and/or fire from short circuit may occur as a result.

- **Do not remove the plug when your hands are wet.**
- **Do not use this unit near gas appliances or fireplaces.**
- **Remove the power plug from the wall outlet before cleaning the unit and when not using the unit.**

Electrical shock from bad insulation and/or fire from short circuit may occur as a result.

- **If the power cord is damaged, it must be replaced by the manufacturer, its service agent, Sharp Approved Service Centre or similarly qualified person in order to avoid a hazard.**
- Do not operate when using aerosol insecticides or in rooms where there is oily residue, incense, sparks from lit cigarettes, chemical fumes in the air or in very high humidity conditions, such as a bathroom.
- Be cautious when cleaning the unit. Corrosive cleansers may damage the exterior.
- Only Sharp Approved Service Centre should service this air purifier. Contact the nearest Service Centre for any problems, adjustments, or repairs.
- This appliance is not intended for use by persons (including children) with reduced physical, sensory or mental capabilities, or lack of experience and knowledge, unless they have been given supervision or instruction concerning use of the appliance by a person responsible for their safety.

Children should be supervised to ensure they do not play with the appliance.

**NOTE** - Radio or TV Interference

If this air purifier should cause interference to radio or television reception, try to correct the interference by one or more of the following measures:

- Reorient or relocate the receiving antenna.
- Increase the separation between the unit and radio/TV receiver.
- Connect the equipment into an outlet on a circuit different from that to which the receiver is connected.
- Consult the dealer or an experienced radio/TV technician for help.

## CAUTIONS CONCERNING OPERATION

- Do not block the intake and/or air outlet.
- Do not use the unit near or on hot objects, such as stoves or heaters or where it may come into contact with steam.
- Do not lay the unit down when using.
- **Always hold the handle on both sides of the unit when moving it.**  
Holding the back panel when carrying may cause it to detach, thus dropping the unit and resulting in bodily injury.
- **Do not operate the unit without the filter.**
- **Do not wash and reuse the filter .**  
Not only does it not improve filter performance, but also may cause electrical shock or malfunction.
- **Clean the exterior with a soft cloth only.**  
The unit surface may be damaged or cracked.  
In addition, the sensors may malfunction as a result.

## INSTALLATION GUIDELINES

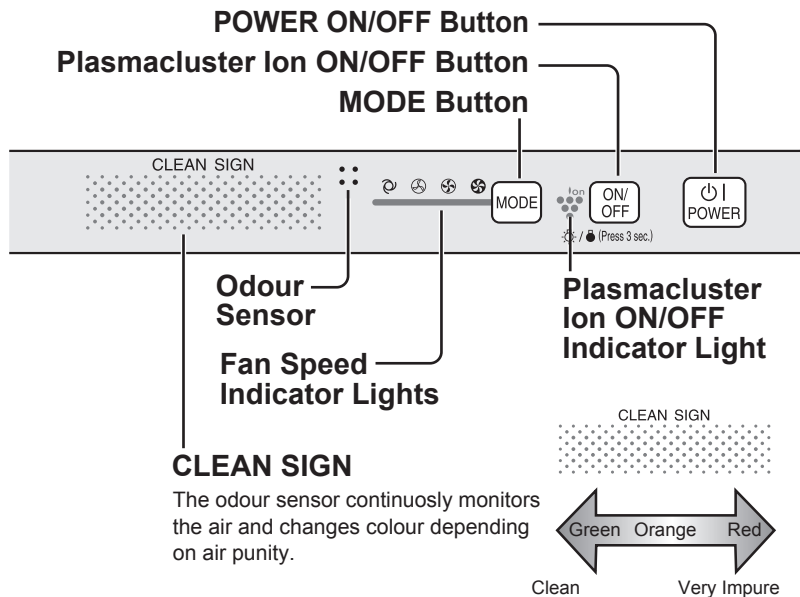
- **During the operation of the product, please place the unit at least 2 m away from equipment utilizing electrical waves such as televisions, radios or wave clocks.**
- **Avoid locations where curtains, etc., come into contact with the intake or air outlet.**  
Curtains, etc., may become dirty or a malfunction may occur.
- **Avoid locations where the unit is exposed to condensation, due to rapid temperature changes.**  
(If it is unavoidable please allow unit to stand for 1 hour before switching on.)  
(Use under appropriate conditions between 0 and 35°C in the room.)
- **Place on a stable surface with sufficient air circulation.**  
When placing the unit on a heavily carpeted area, it may cause the unit to vibrate slightly.
- **Do not install when there is a possibility of soot, such as in a kitchen, etc.**  
The unit surface may crack as a result.
- **Leave about 60cm of space from the wall.**  
The wall behind the air outlet may become dirty as time passes. When using the unit for extended period of time in the same location, use a vinyl sheet, etc., to prevent the wall from becoming dirty. In addition, periodically clean the wall.

## FILTER GUIDELINES

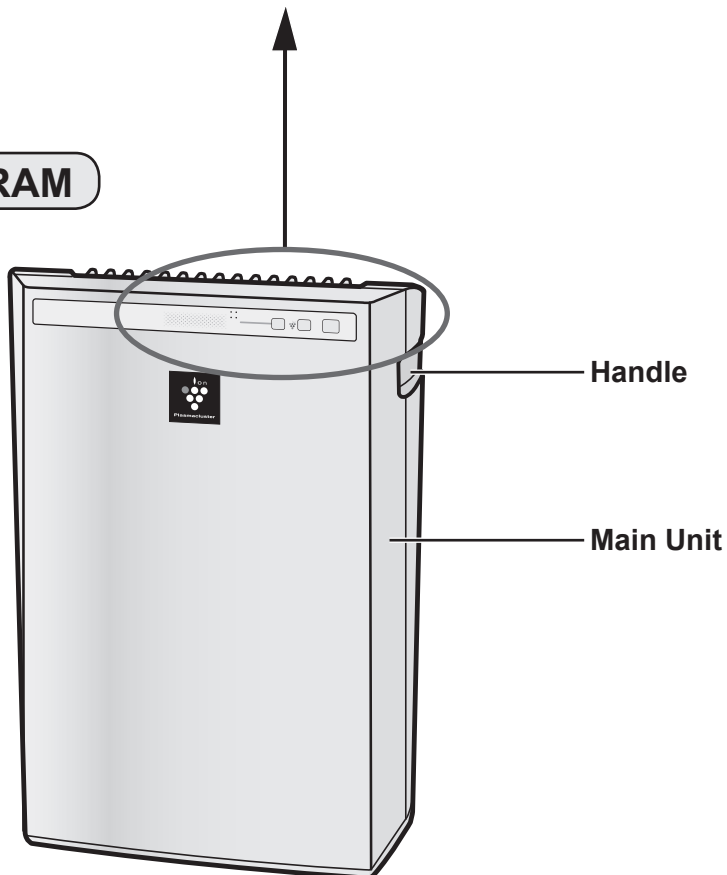
- Follow the instructions in this manual for correct care and maintenance of the filter.  
Use only filter designed for this product.

# PART NAMES

## MAIN UNIT DISPLAY



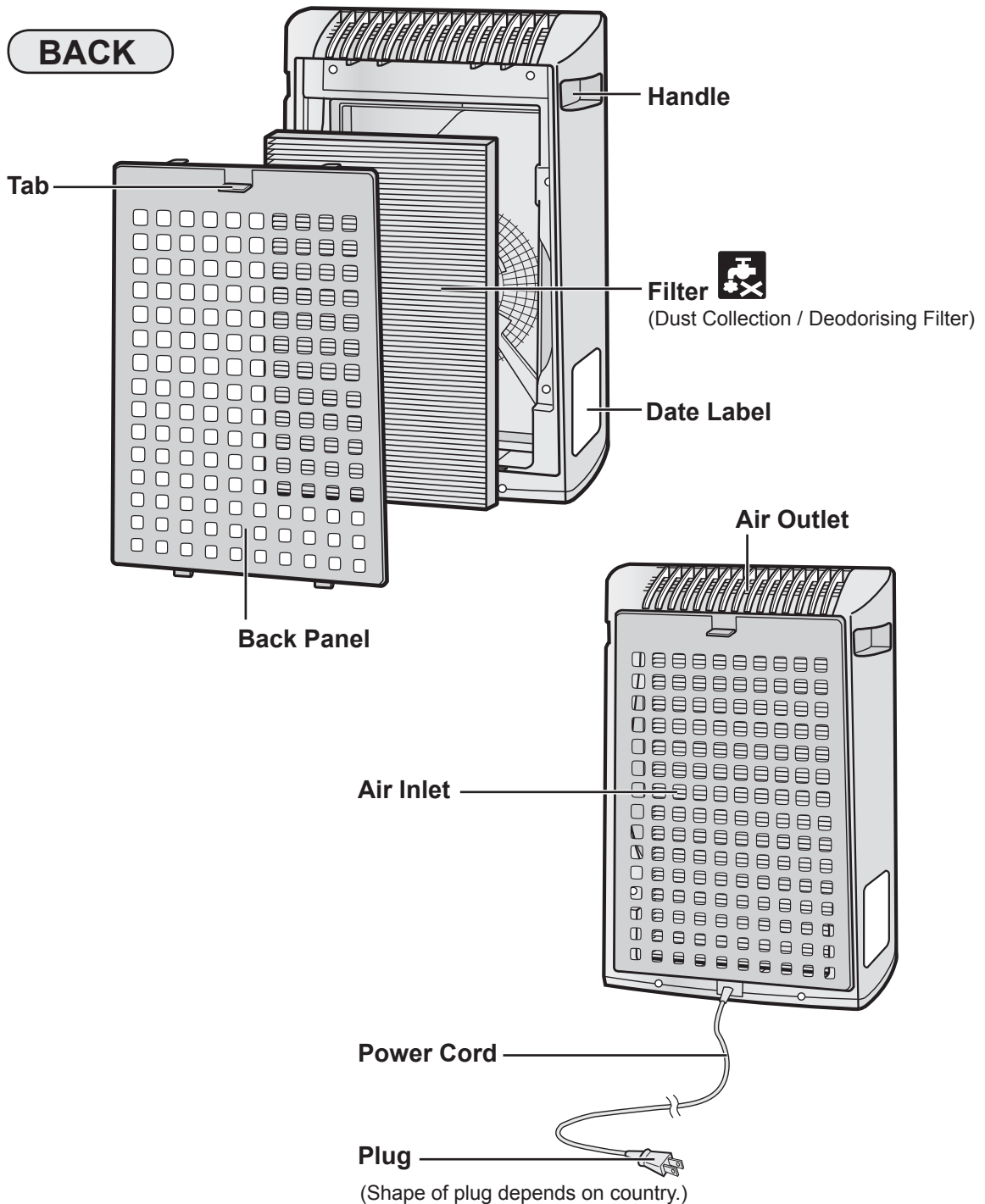
## ILLUSTRATIVE DIAGRAM



## INCLUDED

- Operation manual

## BACK

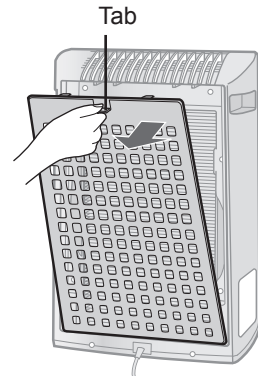


## FILTER INSTALLATION

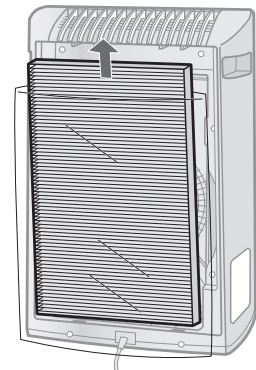
To maintain the quality of the filter, they are installed in the main unit and packed in plastic bag. Be sure to remove the filter from the plastic bag before using the unit.

### 1 Remove the filter

- 1 Remove the Back Panel.**  
Pull the tab at the top of the Back Panel.

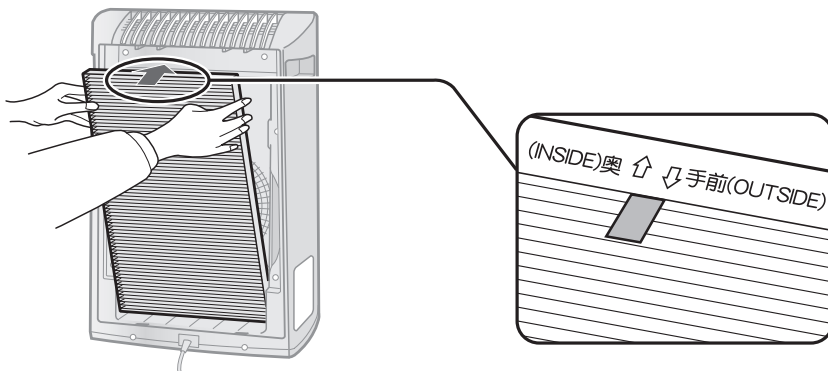


- 2 Remove the Filter from the plastic bag.**



### 2 Install the filter

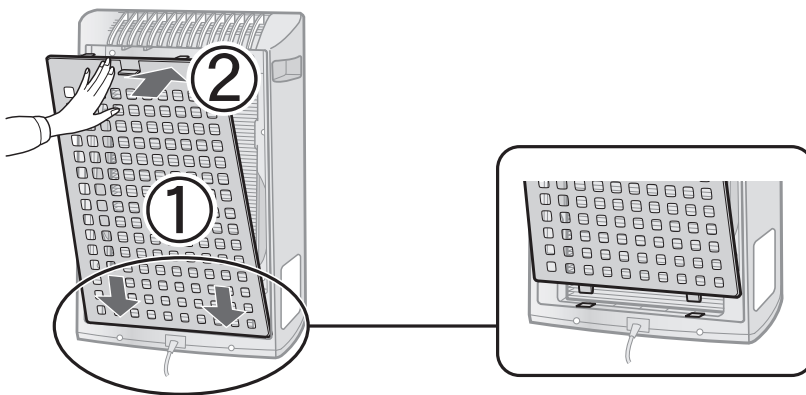
- 1 Place the Filter within the main unit.**  
Do not install the filter backwards or the unit will not operate properly.





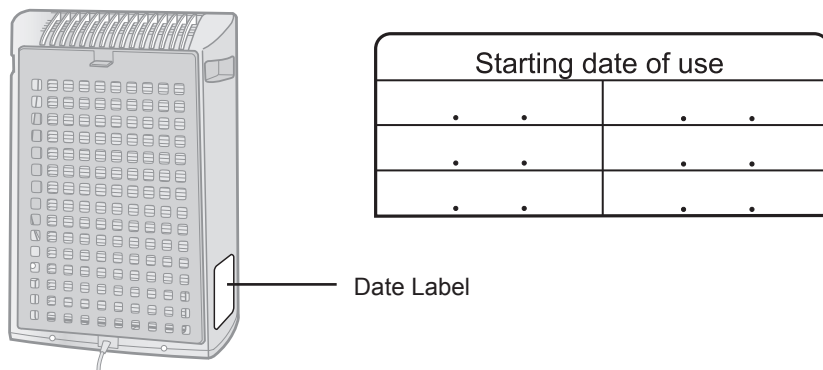
## 2 Replace the Back Panel to the main unit.

Push until it clicks into place.



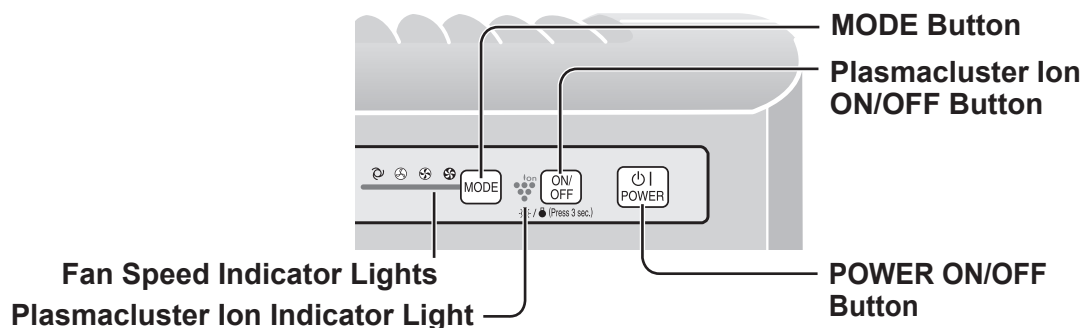
## 3 Fill in the usage start date on the Date Label.

Use the date as a guide for the filter replacement schedule.



# OPERATION

## MAIN UNIT OPERATION



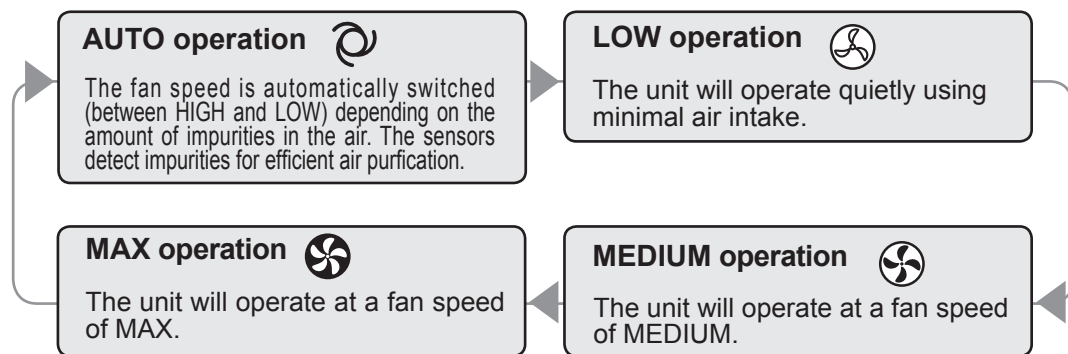
### Power ON/OFF Button

- Press to start operation (short beep) and stop operation (long beep)
- Plasmacluster Ion Indicator Light and Fan Speed Indicator Light turn on/off.
- Unless the power cord has been unplugged, the operations starts in the previous mode it was operated in.



### MODE Button

- Press the MODE Button to select the desired fan speed. Indicator Lights will show the fan speed currently selected.
- The operation mode can be switched as below.



### Plasmacluster Ion ON/OFF Button

Press the Plasmacluster Ion ON/OFF Button to turn Plasmacluster Ion Mode ON and OFF.  
When Plasmacluster Ion is ON, the Plasmacluster Ion Indicator Light will turn on.(blue)  
<When the CLEAN-SIGH is too bright>  
Press the Plasmacluster Ion ON/OFF Button for 3 seconds to switch the CLEAN-SIGN ON and OFF.

# CARE AND MAINTENANCE

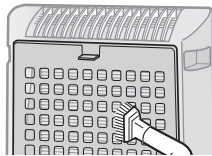
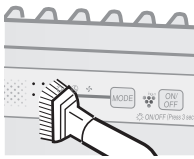
To maintain optimum performance of this air purifier, please clean the unit including the filter periodically.

When cleaning the unit, be sure to unplug the power cord, and never handle the plug with wet hands. Electrical shock and/or bodily injury may occur as a result.

## BACK PANEL and SENSORS

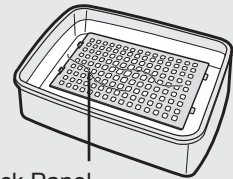
**Care Cycle** Whenever dust accumulates on the unit or every 2 months

Gently remove dust from the sensor opening and the back panel, using a vacuum cleaner attachment or similar tool.



<When the back panel has stubborn dirt>

- 1** In case of heavy dirt, soak the back panel in water with a small amount of kitchen detergent. (Approx. 10min.) (Avoid scrubbing the back panel hard when washing.)
- 2** Rinse the back panel repeatedly with clean water to remove the solution residue.
- 3** Drip dry filter to remove excess water.



Back Panel

## UNIT

**Care Cycle** Whenever dust accumulates on the unit or every 1 month

To prevent dirt or stains on the main unit, clean as often as necessary. If stains are allowed to remain, they may become difficult to remove.

### Wipe with a dry, soft cloth

For stubborn stains or dirt, use a soft cloth dampened with warm water.

### Do not use volatile fluids

Benzene, paint thinner, polishing powder, etc., may damage the surface.

### Do not use detergents

Detergent ingredients may damage the unit.

# CARE AND MAINTENANCE

## FILTER REPLACEMENT GUIDELINES

Filter life vary depending on the room environment, usage, and location of the unit.

**If dust or odour persists, replace the filter.**

(Refer to “Please read before operating your new Air Purifier”)

### Guide for filter replacement timing

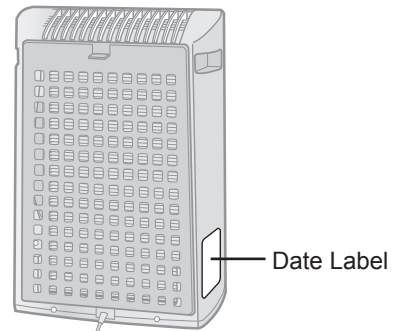
- The following filter life and replacement period is based on the condition of smoking 5 cigarettes per day and the dust collection/deodorization power is reduced by half compared with that of new filter.

We recommend to replace the filter more frequently if the product is used in a condition significantly severer than normal household use.

- |          |                             |
|----------|-----------------------------|
| • Filter | About 2 years after opening |
|----------|-----------------------------|

## REPLACING THE FILTER

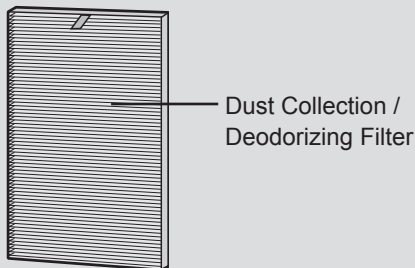
- 1 See page E-6,7 for directions on how to install the filter when replacing.
- 2 Fill in the usage start date of the filter on the Date Label.



### Replacement Filters

Model : FZ-Y30SFE

- Dust Collection / Deodorizing Filter : 1 unit



Please consult your dealer for purchase of replacement filter.

### Disposal of Filter

Please dispose of the replaced filter according to the local disposal laws and regulations.

Filter materials :

- Filter : Polypropylene
- Frame : Polyester
- Deodorizer : Activated charcoal

# TROUBLESHOOTING

Before calling for service, please review the Troubleshooting chart below, since the problem may not be a unit malfunction.

SYMPTOM	REMEDY (not a malfunction)
<b>Odours and smoke are not removed.</b>	<ul style="list-style-type: none"> <li>• Replace the filter if it appear to be heavily soiled. (See E-10)</li> </ul>
<b>The Clean Sign illuminates green even when the air is impure.</b>	<ul style="list-style-type: none"> <li>• The air could be impure at the time the unit was plugged in. Unplug the unit, wait one minute, and plug the unit in again.</li> </ul>
<b>The Clean Sign illuminates orange or red even when the air is clean.</b>	<ul style="list-style-type: none"> <li>• Sensor operation is affected if the odour sensor openings are dirty or clogged. Gently clean the dust sensors. (See E-9)</li> </ul>
<b>A clicking or ticking sound is heard from the unit.</b>	<ul style="list-style-type: none"> <li>• Clicking or ticking sounds may be audible when the unit is generating Plasmacluster ions.</li> </ul>
<b>The discharged air has an odour.</b>	<ul style="list-style-type: none"> <li>• Check to see if the filter are heavily soiled.</li> <li>• Clean or replace the filter.</li> <li>• Plasmacluster Air Purifiers emit small traces of ozone which may produce an odour.</li> </ul>
<b>The unit does not operate when cigarette smoke is in the air.</b>	<ul style="list-style-type: none"> <li>• Is the unit installed in a location that is difficult for the sensor to detect cigarette smoke?</li> <li>• Are the dust sensor openings blocked or clogged? (In this case, clean the openings.) (See E-9)</li> </ul>
<b>The Clean Sign are turned off.</b>	<ul style="list-style-type: none"> <li>• Check to see if the Lights OFF Mode selected. If so, then press the Plasmacluster Ion ON/OFF Button to activate the indicator lights. (See E-8)</li> </ul>
<b>The Clean Sign lights change colour frequently.</b>	<ul style="list-style-type: none"> <li>• The Clean Sign lights automatically change colours as impurities are detected by the odour sensor.</li> </ul>

# SPECIFICATIONS

Model		FU-Z31E		
Power supply		220-240V 50/60Hz		
Fan Speed Operation	Fan Speed Adjustment	MAX	MED	LOW
	Rated Power	49W	32W	23W
	Fan Speed	180m <sup>3</sup> /hour	120m <sup>3</sup> /hour	60m <sup>3</sup> /hour
Recommended Room Size		~21m <sup>2</sup> *1		
High density Plasmacluster ion recommended room size		~13m <sup>2</sup> *2		
Cord Length		2.0m		
Dimensions		356mm(W)x180mm(D)x510mm(H)		
Weight		5.0kg		

\*1 Size of a room which is appropriate for operating the unit at maximum fan speed.

•It indicates the space where a certain amount of dust particles can be removed in 30 minutes(JEM1467).

\*2 Size of a room in which approximately 7000 ions can be measured per cubic centimeter in the center of the room (at a height of approximately 1.2 meters from the floor) when the product is placed next to a wall and run at the MAX operation position.

## Standby Power

In order to operate the electrical circuits while the power plug is inserted in the wall outlet, this product consumes about 1.0W of standby power.  
For energy saving, unplug the power cord when the unit is not in use.

**The class of the HEPA filter by EN 1822 is H10.**

# **SHARP**

**SHARP CORPORATION**

**OSAKA, JAPAN**

Printed in China  
TINS-A420KKRZ 10C- (CN) ①

## Free Manuals Download Website

<http://myh66.com>

<http://usermanuals.us>

<http://www.somanuals.com>

<http://www.4manuals.cc>

<http://www.manual-lib.com>

<http://www.404manual.com>

<http://www.luxmanual.com>

<http://aubethermostatmanual.com>

Golf course search by state

<http://golfingnear.com>

Email search by domain

<http://emailbydomain.com>

Auto manuals search

<http://auto.somanuals.com>

TV manuals search

<http://tv.somanuals.com>