



SCOREBOARDS

Electric Drawings and ISC-85X Operator Instructions

BASKETBALL SCOREBOARD

5240



1551 E 11th Street, Loveland, CO 80537 • 970-667-1000 • Fax: 970-667-1032 • www.coloradotime.com



Introduction

Congratulations on the purchase of your new electronic scoreboard. Your scoreboard is state of the art and designed for easy installation. This instruction booklet will provide you with general information on installing your scoreboard along with detailed information regarding your particular model. If further information is required please contact your CDS sales representative at 970-667-1000.

Service and Customer Information

In the event service is required for your scoreboard or if you wish to order replacement parts please contact your CDS sales representative at 970-667-1000.

To aid in your discussions, we suggest that you record the following information for reference:

MODEL NUMBER: _____

INSTALLATION DATE: _____

CDS SALES
REPRESENTATIVE: _____

CONTACT
INFORMATION: _____

CONTACT
PRODUCT
SERIAL NUMBERS: _____

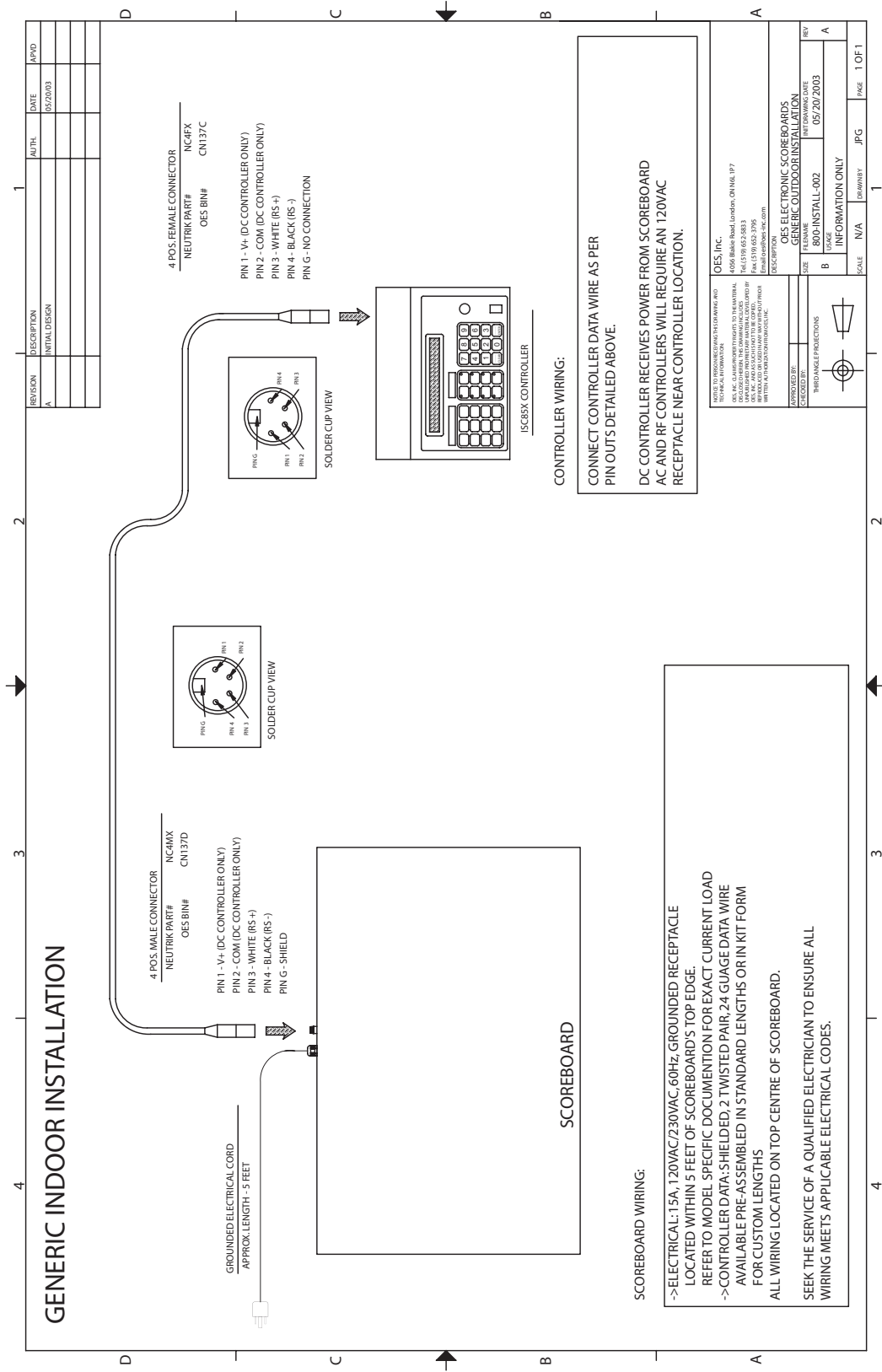
Indoor Scoreboards

Your scoreboard will require a 120 VAC, 60 Hz, grounded receptacle located within 5 feet of the top-center of the scoreboard. Optional 230VAC, 60Hz, is also available. Typically the outlet will be a dedicated 15 Amp circuit. Refer to the model specific information provided in this package for the exact current load for your scoreboard. FIGURE 1 illustrates a generic installation including a controller. Seek the service of a qualified electrician to ensure the electrical installation meets all local electrical codes. CDS assumes no responsibilities for installations done by others.

NOTE: On scoreboards with the cULus mark, the scoreboard does not come equipped with a power cord as these units must be permanently wired in.

Data cabling for the scoreboard is available in standard lengths (connectors factory installed), or as a kit for custom lengths (connectors installed on site). See the DATA CABLING section for more information.

Wall mounting is the preferred method of installation. When determining the installation location, ensure the scoreboard is NOT hung from a non-rigid support. The scoreboard is shipped with mounting brackets which are located on the backside of the enclosure. The brackets are rotated to prevent damage during shipping. Remove and re-install the brackets so that the mounting holes are exposed past the edge of the scoreboard. Lifting eyebolts are provided on the top of the scoreboard to facilitate lifting of the unit to its final installation location. Using appropriate equipment, lift and secure the scoreboard to the wall. The type of fasteners selected should be suitable for the type of wall construction and have sufficient capacity to support the scoreboard. CDS recommends using 3/8" fasteners. Detailed information regarding mounting locations and fasteners recommendations for your scoreboard model is provided in the documentation attached.

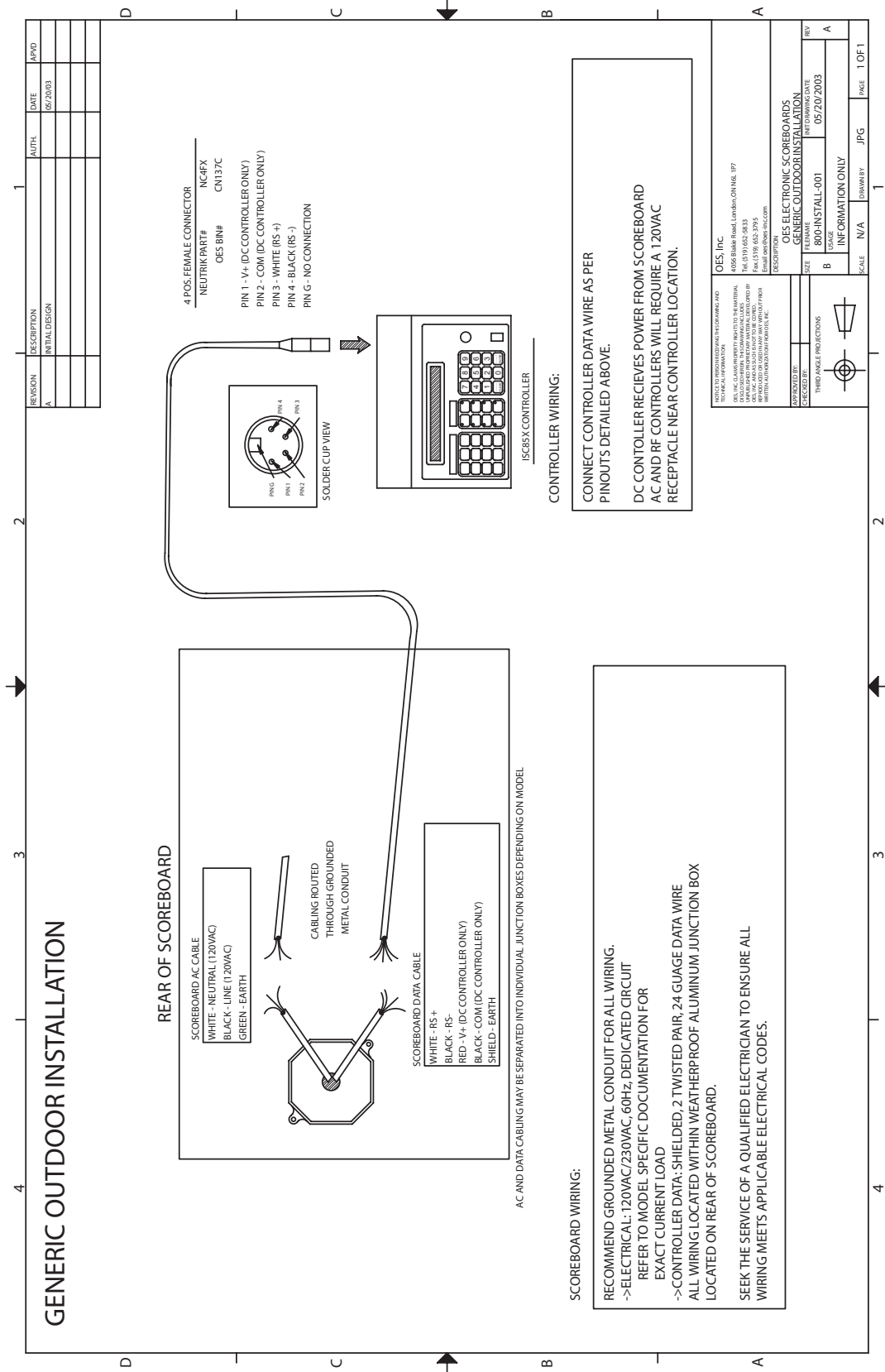


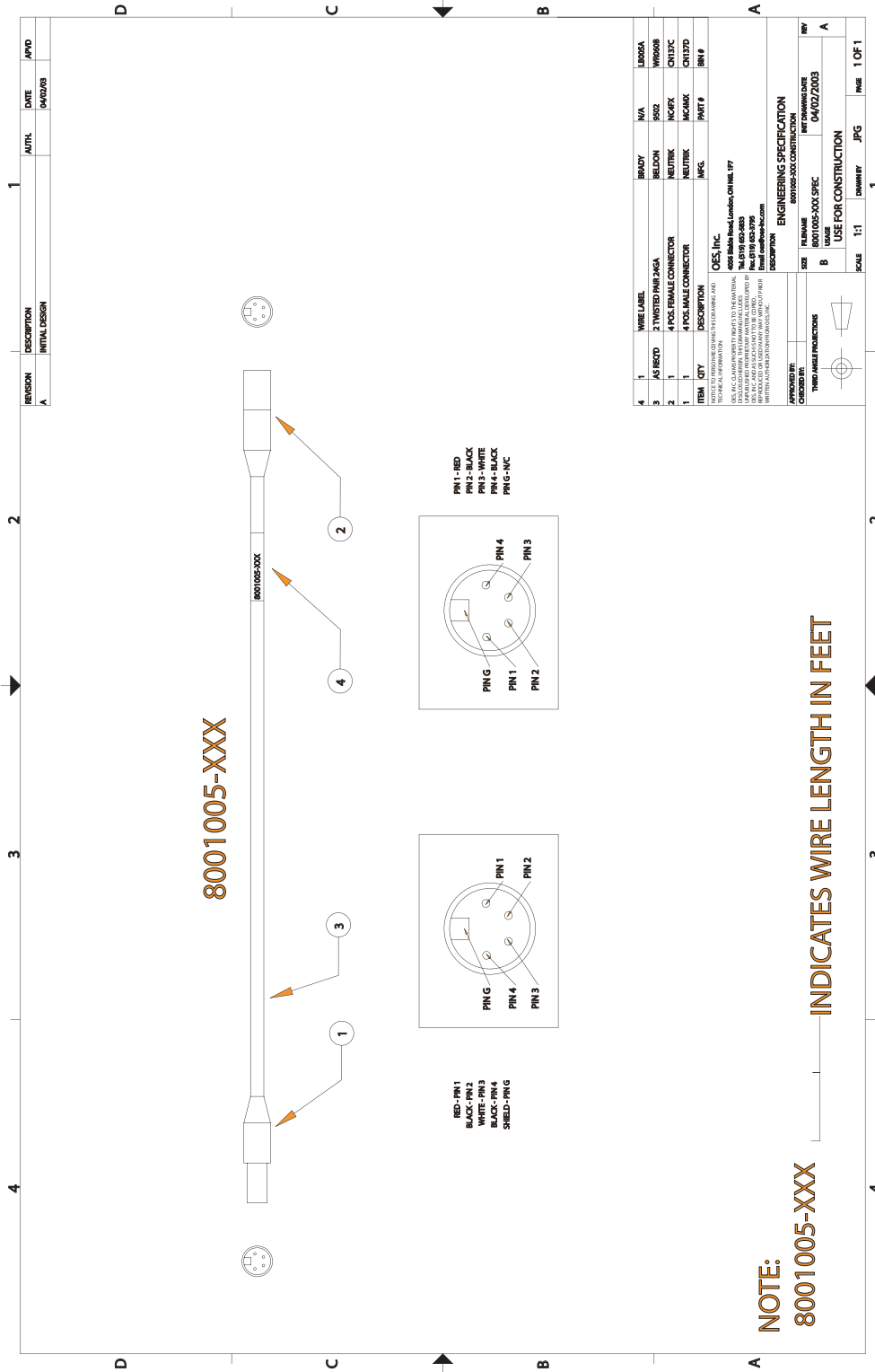
Installation

Outdoor Scoreboards

Your scoreboard will require a 120 VAC, 60 Hz, grounded electrical feed. Typically the feed will be a dedicated 20 Amp circuit. Optional 230VAC, 60Hz, is also available. Refer to the model specific information provided in this package for the exact current load for your scoreboard. FIGURE 2 illustrates a generic installation including a controller. CDS recommends using ONLY grounded metal conduit. Seek the service of a qualified electrician to ensure the electrical installation meets all local electrical codes. CDS assumes no responsibilities for installations done by others. Data cabling for the scoreboard is available as a kit for installation with the grounded conduit (connectors installed on site). See the DATA CABLING for more information.

Pole mounting is the preferred method of installation. Seek the service of a qualified contractor to ensure the structure meets all local building codes. Any information provided by CDS is for INFORMATION USE ONLY. The scoreboard is shipped with mounting brackets which will require installation prior to mounting the scoreboard. All necessary hardware required to mount the brackets to the scoreboard is provided with your new scoreboard. Lifting eyebolts are provided on the top of the scoreboard to facilitate lifting of the unit to its final installation location. Using appropriate equipment, lift and secure the scoreboard to the structure. The type of fasteners selected should be suitable for the type of construction and have sufficient capacity to support the scoreboard. CDS recommends using ½", grade 8 fasteners. Detailed information regarding mounting locations and fastener recommendations for your scoreboard model is provided in the documentation attached.





ITEM	QTY	DESCRIPTION	QES, Inc.	Part #	REV #
4	1	WIRE LABEL	BRADY	NVA	LE009A
3	1	AS REQD 2 TWISTED PAIR 24GA	BEUDON	5502	WR0608
2	1	4 POS FEMALE CONNECTOR	WETTRK	MC4FK	ON152C
1	1	4 POS FEMALE CONNECTOR	WETTRK	MC4FK	ON152D

APPROVED BY:	DATE:	DESCRIPTION:	SCALE:	REV
		ENGINEERING SPECIFICATION	1:1	A
		8001005-XXX CONSTRUCTION		
		8001005-XXX SPEC		
		USE FOR CONSTRUCTION		
		04/02/2003		

NOTE:
8001005-XXX
INDICATES WIRE LENGTH IN FEET

Installation

Data Cabling

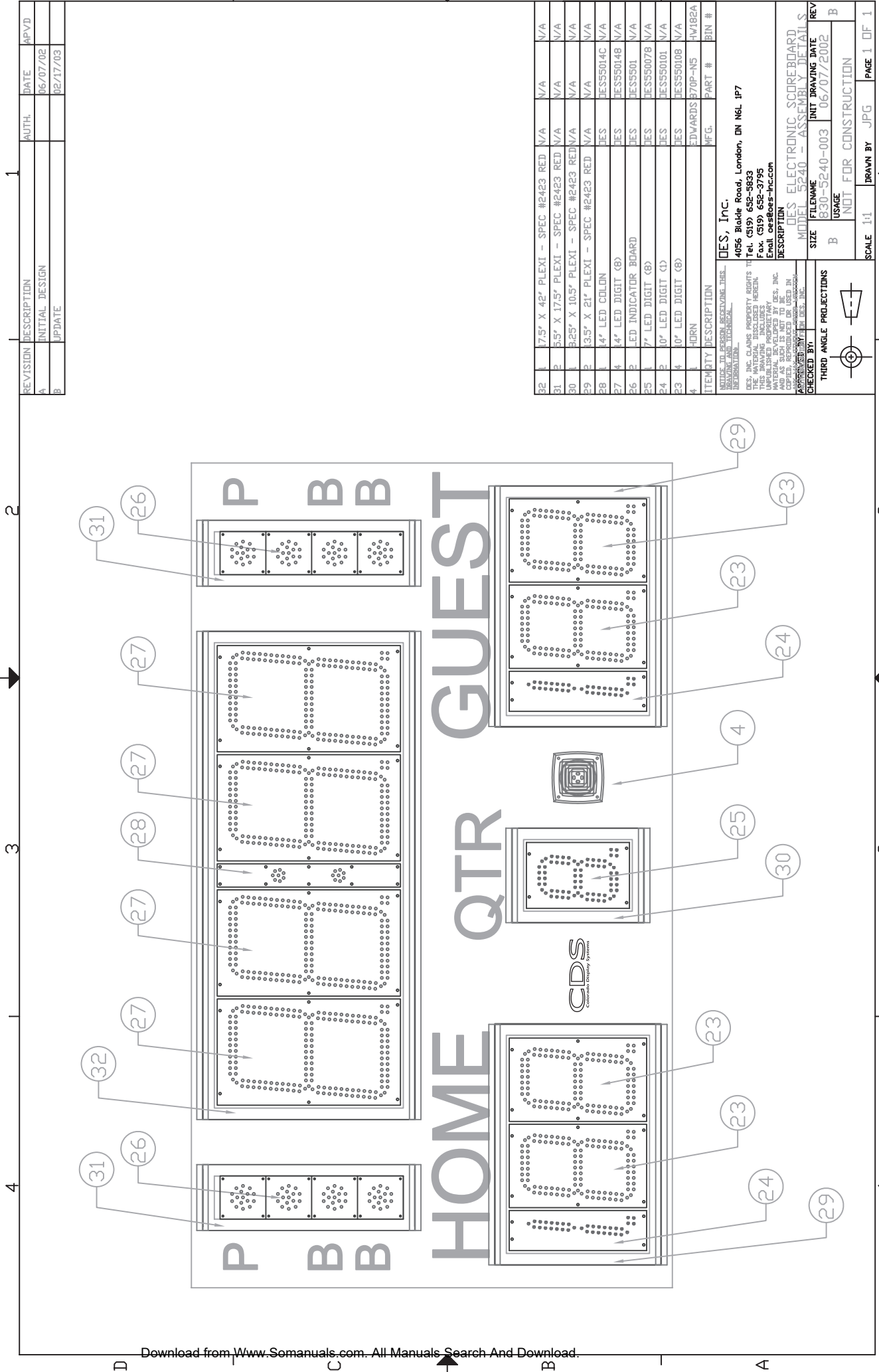
Data cabling can be purchased as a pre-assembled cable in set lengths or as a kit to be assembled on site. Pre-assembled cables are available in multiple lengths of 25 feet (25ft, 50ft, 75ft, etc). Cable kits can be purchased in any desired length. If cabling is to be routed through conduit, CDS recommends purchasing the cable kit. FIGURE 3 outlines connection details for both. Your CDS sales representative can help you select the appropriate cabling choice for your particular installation.

Installation Accessories

A wide range of accessories are available to you and your facility to ease installation and protect your scoreboard investment. Products such as junction boxes and connector boxes are available to provide a professional appearance to any installation. RF radios are available for both indoor and outdoor scoreboards to eliminate costly controller cabling. Safety screens are available to protect the scoreboard from accidental impact. Protective bags are available for controller storage and transport while not in use. Please contact your CDS sales representative for more information on available accessories for your scoreboard.

Model Specific Documentation

The following pages are specific to your scoreboard model and include details on internal wiring, replacement parts, and specific mounting details. If any further information is required please contact your CDS sales representative at 970-667-1000.



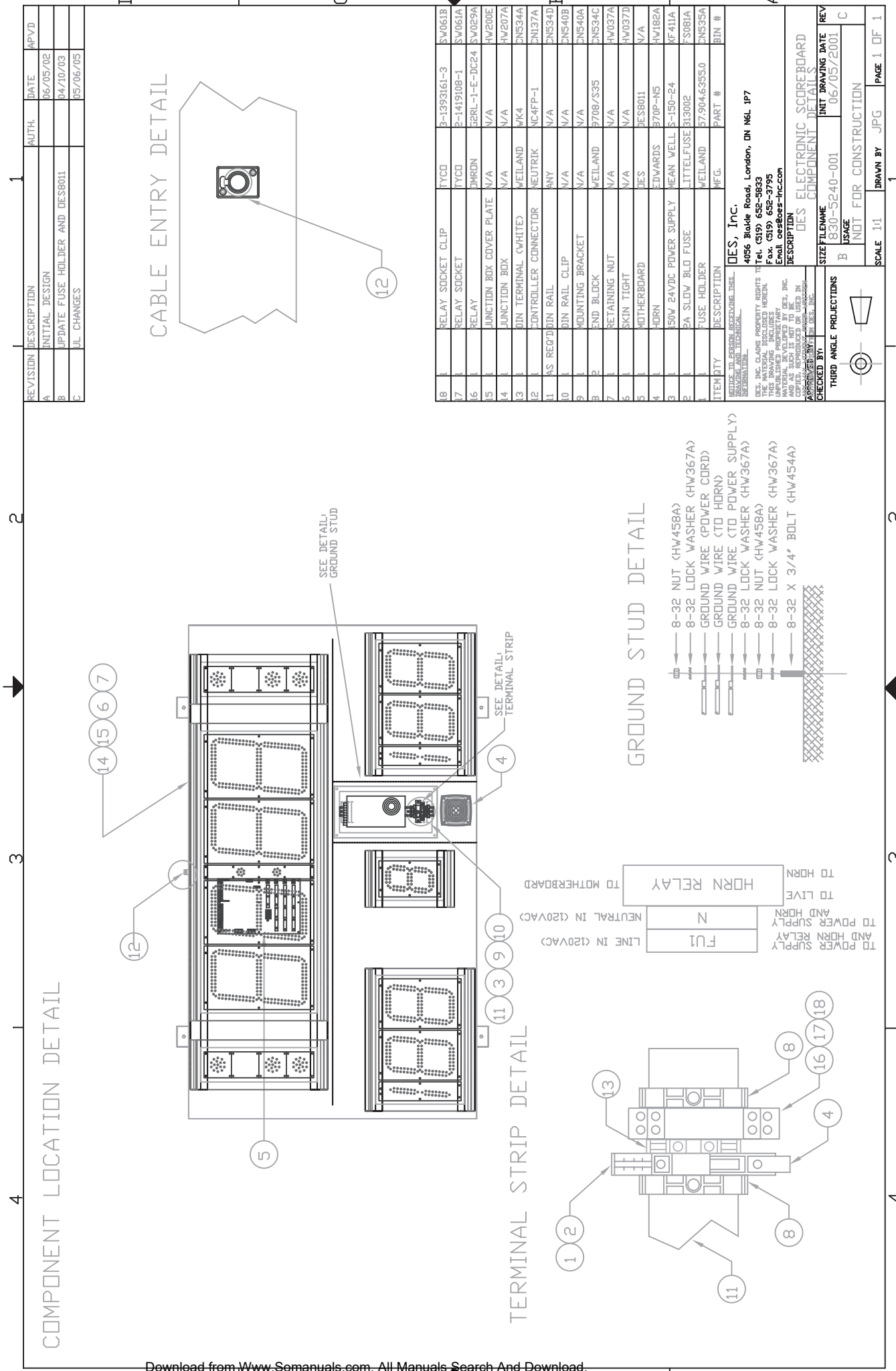
REVISION	DESCRIPTION	AUTH.	DATE	APVD
A	INITIAL DESIGN		06/07/02	
B	UPDATE		02/17/03	

ITEM #	ITEM DESCRIPTION	QTY	UNIT	REV
32	17.5" X 42" PLEXI - SPEC #2423 RED	N/A	N/A	N/A
31	5.5" X 17.5" PLEXI - SPEC #2423 RED	N/A	N/A	N/A
30	3.25" X 10.5" PLEXI - SPEC #2423 RED	N/A	N/A	N/A
29	3.5" X 21" PLEXI - SPEC #2423 RED	N/A	N/A	N/A
28	4" LED COLON	DES	JES55014C	N/A
27	4" LED DIGIT (8)	DES	JES55014B	N/A
26	LED INDICATOR BOARD	DES	JES5501	N/A
25	7" LED DIGIT (8)	DES	JES550078	N/A
24	10" LED DIGIT (1)	DES	JES550101	N/A
23	10" LED DIGIT (8)	DES	JES550108	N/A
4	HORN	EDWARDS	370P-NS	HV1B2A
			WFG.	PART #
				BIN #

DES, Inc.
 4056 Briarle Road, London, ON N6L 1P7
 Tel: (519) 652-5833
 Fax: (519) 652-3795
 Email: ces@des-inc.com

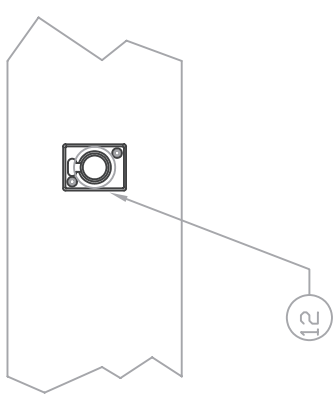
DESCRIPTION	FILENAME	INIT DRAWING DATE	REV
DES ELECTRONIC SCOREBOARD	MODEL 5240 - ASSEMBLY DETAILS	06/07/2002	B
CHECKED BY:	SIZE	ISSUE	NOT FOR CONSTRUCTION
	B		



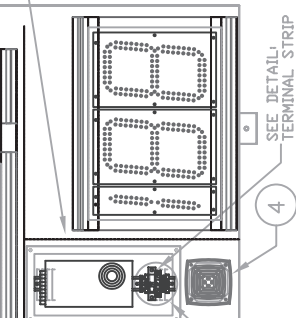


REVISION	DESCRIPTION	AUTH.	DATE	APVD
A	INITIAL DESIGN		06/05/02	
B	UPDATE FUSE HOLDER AND DES8011		04/10/03	
C	IL CHANGES		05/06/05	

CABLE ENTRY DETAIL



SEE DETAIL, GROUND STUD



TERMINAL STRIP DETAIL

GROUND STUD DETAIL



16	RELAY SOCKET CLIP	TYCD	3-1393161-3	SW061B
17	RELAY SOCKET	TYCD	2-1419108-1	SW061A
18	RELAY	DMRN	GERL-1-E-JC24	SW029A
19	JUNCTION BOX COVER PLATE	N/A	N/A	HW200E
20	JUNCTION BOX	N/A	N/A	HW207A
21	DIN TERMINAL (WHITE)	WEILAND	WK4	DN534A
22	CONTROLLER CONNECTOR	NEUTRIK	NC4FP-1	NI37A
23	AS REQ/DIN RAIL	ANY	N/A	DN534B
24	DIN RAIL CLIP	N/A	N/A	DN540B
25	MOUNTING BRACKET	N/A	N/A	DN540A
26	END BLOCK	WEILAND	9708/S35	DN534C
27	RETAINING NUT	N/A	N/A	HW037A
28	SKIN TIGHT	N/A	N/A	HW037D
29	MOTHERBOARD	IES	DES8011	N/A
30	HORN	EDWARDS	970P-NS	HW182A
31	150W 24VDC POWER SUPPLY	MEAN WELL	S-150-24	KF411A
32	2A SLOW BLD FUSE	LITTELFUSE	313002	S081A
33	FUSE HOLDER	WEILAND	97904.6355.0	DN535A
34	ITEM ID	DESCRIPTION	MFG.	PART #

DES, Inc.
 4056 Blake Road, London, ON N6L 1P7
 Tel: (519) 652-5833
 Fax: (519) 652-3795
 Email: ces@des-inc.com

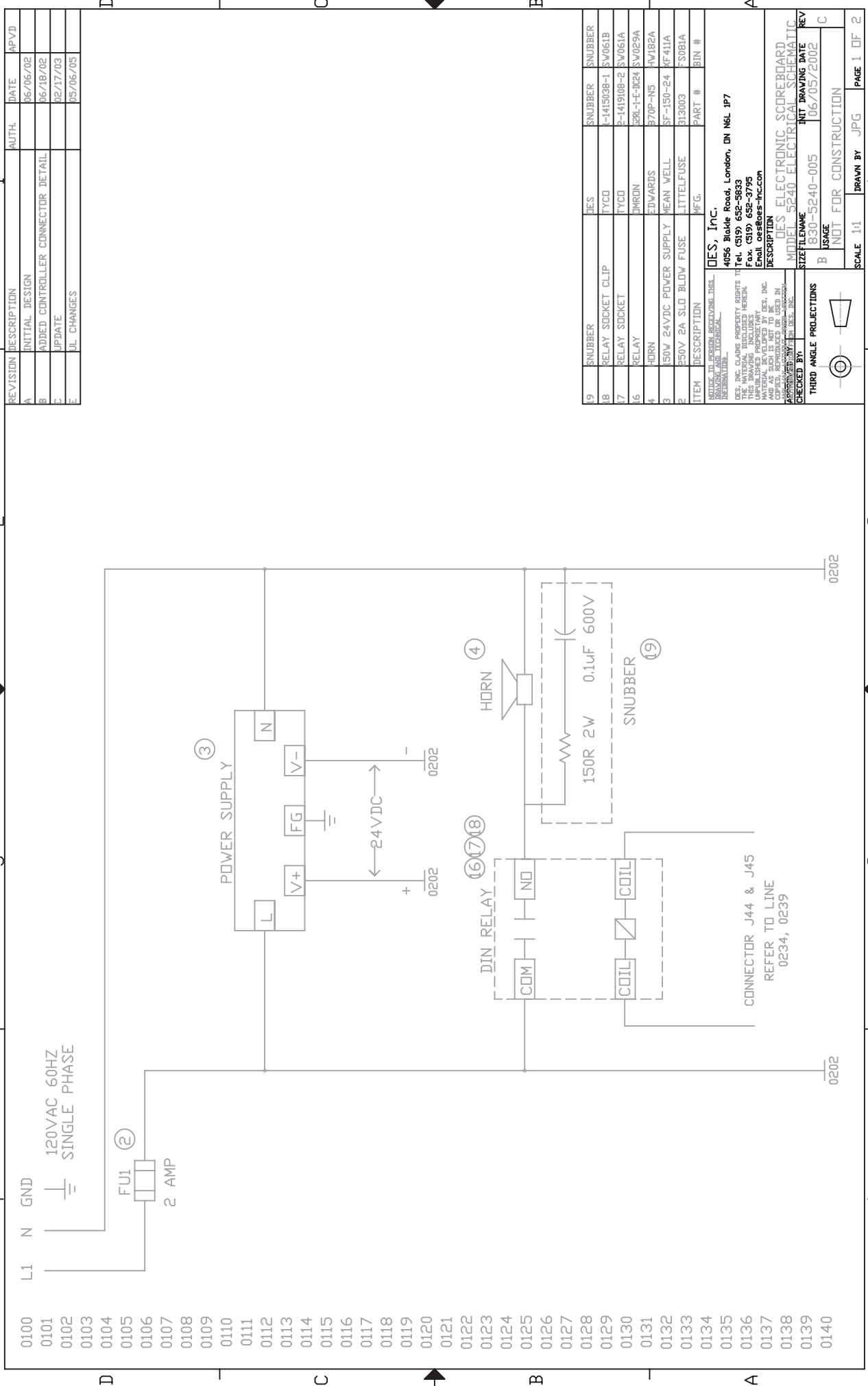
DES ELECTRONIC SCOREBOARD COMPONENT DETAILS

APPROVED BY: [Signature]

CHECKED BY: [Signature]

SIZE FILENAME: B 830-5240-001
 INIT DRAWING DATE: 06/05/2001
 USAGE: NOT FOR CONSTRUCTION

SCALE: 1:1 DRAWN BY: JPG PAGE: 1 OF 1



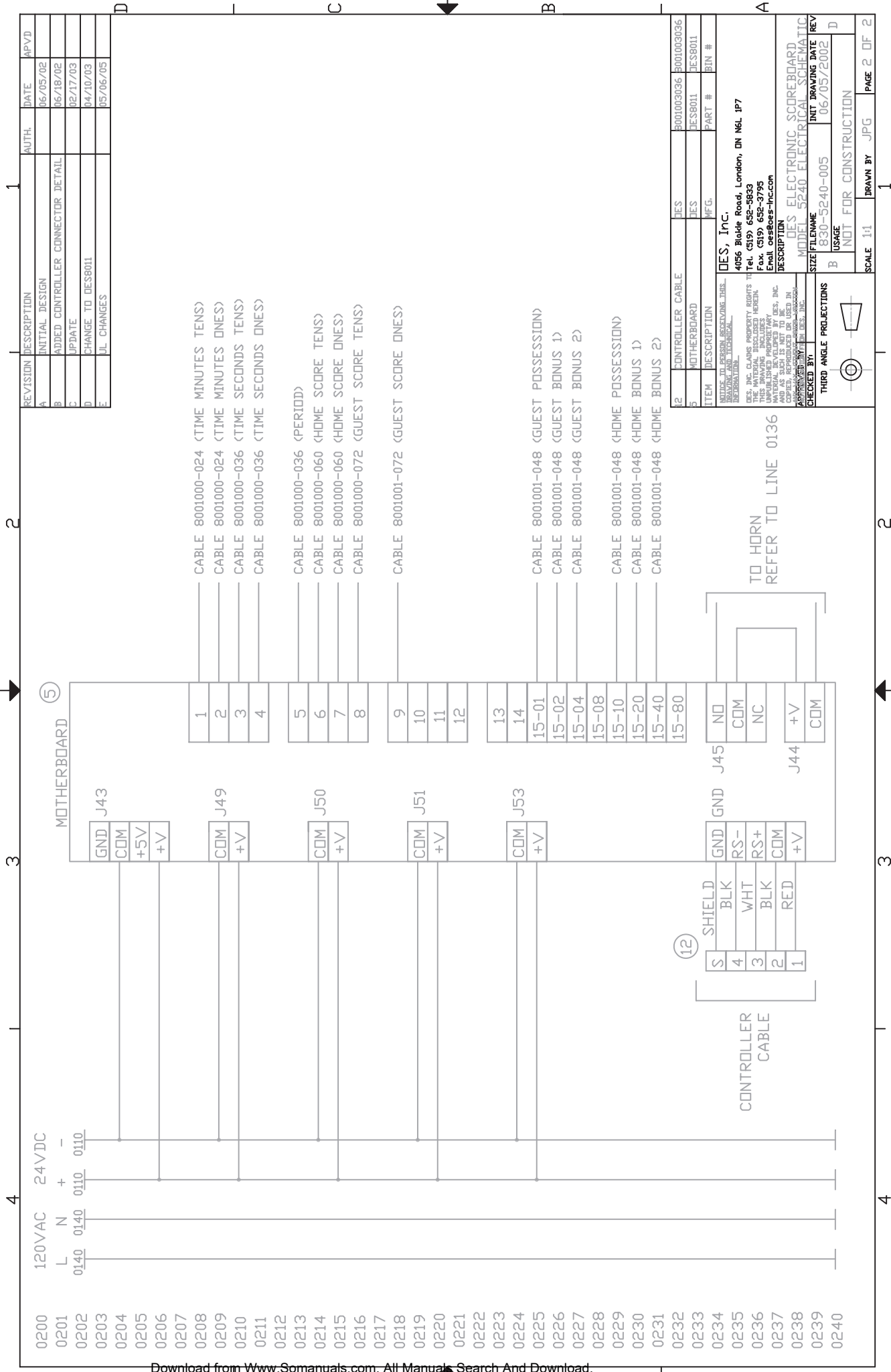
REVISION	DESCRIPTION	AUTH.	DATE	APVD
A	INITIAL DESIGN		06/06/02	
B	ADDED CONNECTOR DETAIL		06/18/02	
C	UPDATE		02/17/03	
E	UL CHANGES		05/06/05	

ITEM	DESCRIPTION	QTY	UNIT	PART #	BIN #
19	SNUBBER	DES	SNUBBER	SNUBBER	
18	RELAY SOCKET CLIP	TYCO		-141908-1	SV061B
17	RELAY SOCKET	TYCO		2-141908-2	SV061A
16	RELAY	DMRDN		29L-F-1024	SV029A
4	HORN	EDWARDS		37DP-NS	HV182A
3	150V 24VDC POWER SUPPLY	MEAN WELL		SF-150-24	KF411A
2	250V 2A SLD BLOW FUSE	LITTELFUSE		313003	S081A

NOTICE: DO NOT PERSONALIZE THIS DRAWING.
 THIS DRAWING IS THE PROPERTY OF DEFES, Inc.
 THE MATERIAL DISCLOSED HEREIN IS UNCLASSIFIED.
 MATERIAL DEVELOPED BY DEFES, Inc. IS UNCLASSIFIED.
 ALL INFORMATION CONTAINED HEREIN IS UNCLASSIFIED.
 DATE 06/05/2002 BY 106705/E002
 CHECKED BY: [Signature]
 APPROVED BY: [Signature]

DEFES, Inc.
 4056 Blake Road, London, ON N6L 1P7
 Tel: (519) 652-9833
 Fax: (519) 652-3795
 Email: sales@defes-inc.com

DEFES ELECTRONIC SCOREBOARD
MODEL 5240 ELECTRICAL SCHEMATIC
 SIZE FILENAME: B 830-5240-005
 UNIT DRAWING DATE: 06/05/2002
 USAGE: INT FOR CONSTRUCTION
 THIRD ANGLE PROJECTIONS: [Symbol]
 SCALE: 1:1
 DRAWN BY: JPG
 PAGE 1 OF 2



REVISION	DESCRIPTION	AUTH.	DATE	APVD
A	INITIAL DESIGN		06/05/02	
B	ADDED CONTROLLER CONNECTOR DETAIL		06/18/02	
C	UPDATE		02/17/03	
D	CHANGE TO DES8011		04/10/03	
E	JUL CHANGES		05/06/05	

ITEM	DESCRIPTION	QTY.	PART #	BIN #
12	CONTROLLER CABLE	DES	8001003036	8001003036
5	MOTHERBOARD	DES	DES8011	DES8011

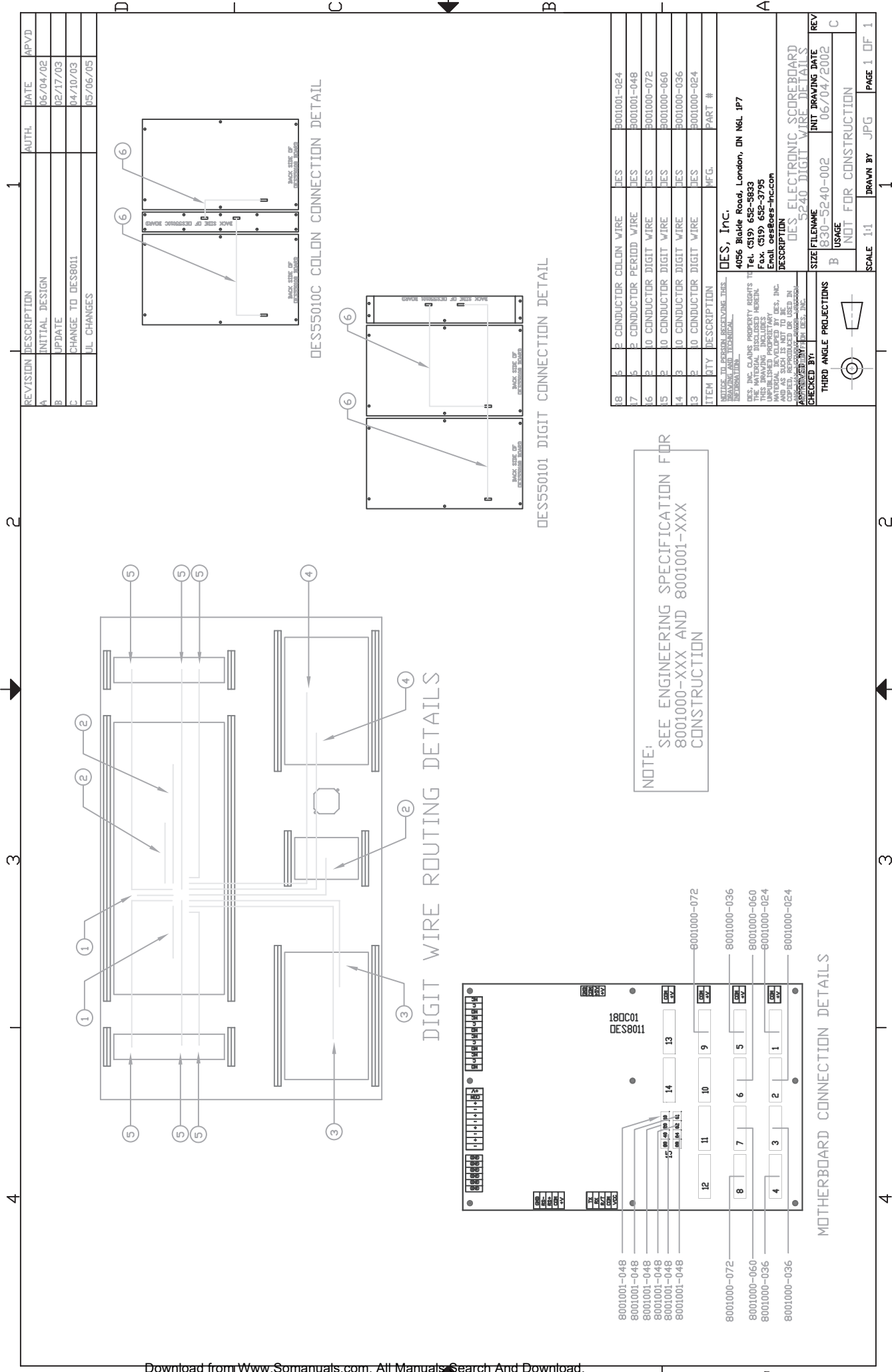
DES, Inc.
4056 Blake Road, Loveland, CO 80537
Tel: (970) 662-9893
Fax: (970) 662-3795
Email: cdes@des-inc.com

DES ELECTRONIC SCOREBOARD
MODEL 5240 ELECTRICAL SCHEMATIC

SIZE: FILENAME: 830-5240-005
INIT DRAWING DATE: 06/05/2002

USAGE: B
NOT FOR CONSTRUCTION

SCALE: 1:1 DRAWN BY: JPG PAGE 2 OF 2



REVISION	DESCRIPTION	AUTH.	DATE	APVD
A	INITIAL DESIGN		06/04/02	
B	UPDATE		02/17/03	
C	CHANGE TO DES8011		04/10/03	
D	UL CHANGES		05/06/05	

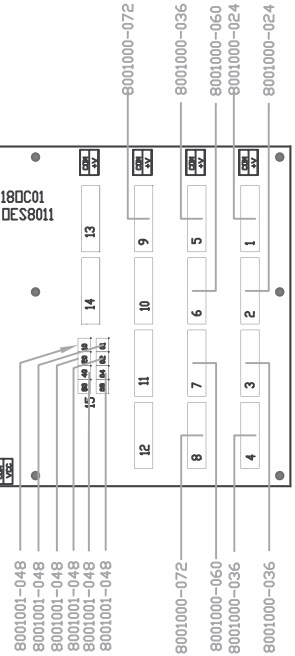
DESS5010C COLON CONNECTION DETAIL

DESS50101 DIGIT CONNECTION DETAIL

DIGIT WIRE ROUTING DETAILS

MOTHERBOARD CONNECTION DETAILS

NOTE:
SEE ENGINEERING SPECIFICATION FOR
8001000-XXX AND 8001001-XXX
CONSTRUCTION



ITEM	QTY	DESCRIPTION	MFG.	PART #
18	6	CONDUCTOR COLON WIRE	DES	8001001-024
17	6	CONDUCTOR PERIOD WIRE	DES	8001001-048
16	3	CONDUCTOR DIGIT WIRE	DES	8001000-072
15	3	CONDUCTOR DIGIT WIRE	DES	8001000-060
14	3	CONDUCTOR DIGIT WIRE	DES	8001000-036
13	3	CONDUCTOR DIGIT WIRE	DES	8001000-024

DES, Inc.
4056 Blakie Road, Loveland, CO 80537
Tel. (319) 652-3823
Fax. (319) 652-3795
Email: esdes@des-inc.com

DES ELECTRONIC SCOREBOARD
DES S240 DIGIT WIRE DETAILS

CHECKED BY: [Signature]
APPROVED BY: [Signature]

THIRD ANGLE PROJECTIONS

SIZE	FILENAME	INIT DRAWING DATE	REV
B	830-S240-002	06/04/2002	C
USAGE			
NOT FOR CONSTRUCTION			

SCALE 1:1 DRAWN BY JGP PAGE 1 OF 1

ISC85X Intelligent Controller



INTRODUCTION:

The ISC85x controller comes ready to use; no setup required. All settings are pre-set at the factory to the customer requirements. The settings can be accessed by the operator if necessary. There are a number of configure / set-up features within the controller. These features include: Turning the scoreboard off/on, setting up the sport and features of the scoreboard, setting the time of day (TOD), setting the contrast on the controller LCD display, and running the scoreboard through a system of tests.

NOTE: These configure features, including this instruction sheet, should be kept from the standard user and only made available to the person in charge of the scoreboard system.

OPERATION:

To enter into configure mode on the controller:

- Turn on controller.
- Turn RUN/STOP switch to STOP position.
- Press and hold the bottom button in the fifth column on the keypad until the configure menu appears (Button to the left of CLEAR). This button may be blank or may be labeled "CONFIG" or "SETUP".
- Select desired option using the numeric keypad.

OPTIONS:

1. Board Off/On:

- This blanks the entire scoreboard. This is only required on a few baseball scoreboard models, since the majority will blank on their own 15 seconds after the last communications for the controller.

2. Select Sport/Features:

- The first screen selects the sport, follow on screen instructions.

MODEL 52xx SYSTEM NOTE:

basketball, volley ball, and wrestling are valid selections.

MODEL 62xx SYSTEM NOTE:

Hockey is only valid selection.

ISC85X Intelligent Controller

The next screen selects the features.

- '0' indicates disabled
- '1' indicates enabled
- 'X' means '0' or '1' will depend on the system
(Contact factory if clarification is required.)

Basketball	5200	5210	5240
Time Out Left	0	0	0
Team Fouls	0	1	0
Player Fouls	0	0	0
Last Foul	0	1	0
Shoot Clocks	X	X	X

Hockey	6200 / 6220	6210 / 6225	6240
Shots On Goal	0	0	0
Penaltys	1	1	1
Time	1	1	0
Player	1	0	0
Shot Clocks	X	X	X
Shift Timer	X	X	X
Motherboard Filler	X	X	X

Follow on screen instructions to properly set-up features

NOTE: Improper settings will result in the scoreboard operating and displaying undesirably.

3. TOD

- This sets up the time of day on the clocks in the scoreboard system.
- Ensure all clocks that need to receive this setting are on and attached to the controller through the communication network.
- Follow on screen instructions to properly set-up TOD.

4. Contrast

- This controls the brightness / contrast of the LCD on the controller.

- Follow on screen instructions to properly set-up the contrast.

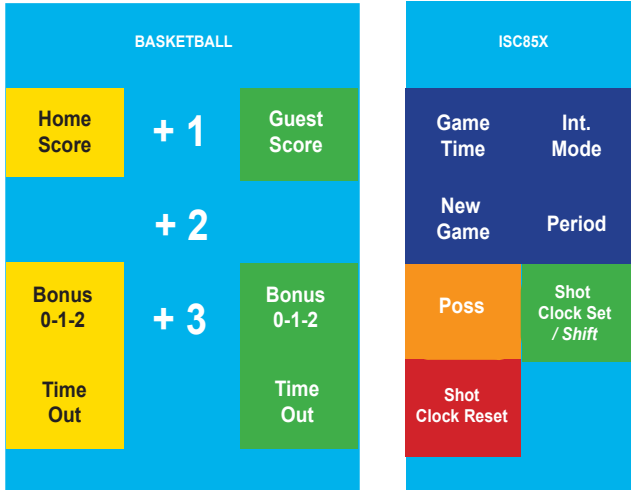
5. Board Test:

- This will test the scoreboard digits. The first test, All On, turns on everything. The other test, Rotate, has all digits counting from 0-9, then blank.
- These tests continue until you exit from the screen and then will return to the game displays.
- Follow on screen instructions to control the tests.

6. Exit

- This exits the configure screens without any changes.

ISC85X Intelligent Controller 5240 Instructions



1. **START/STOP** the clock:
 - Flip switch ON/OFF (Rocker switch on the right side of the unit.)
2. Manual **HORN**:
 - Activate by pressing the push button switch on the right side of the unit.
3. Automatic **HORN**:
 - Horn sounds automatically when time hits 0:00.
 - Horn will sound for 1.5 seconds.
4. To set **TIME**:
 - Press GAME TIME.
 - Enter “minutes” on the numeric keypad. Press Enter.
 - Enter “seconds” on the numeric keypad. Press Enter.
 - Enter “tenths of seconds” on the numeric keypad. Press Enter.
 - When pressed at the end of the period, the last entered time will appear and the period will automatically increment.
5. To set **TIME OUT/INTERMISSION** timer:
 - Press INT. MODE.
 - Enter “minutes” on the numeric keypad. Press Enter.
 - Enter “seconds” on the numeric keypad. Press Enter.
 - To exit this mode, press INT. MODE again.
6. To set **PERIOD/QUARTER**:
 - Press PERIOD.
 - Enter period on the numeric keypad. Press Enter.
7. To set **SCORES**:
 - Press HOME SCORE or GUEST SCORE.
 - Enter score on numeric keypad. Press Enter.
8. To **INCREMENT SCORES**:
 - Press HOME SCORE or GUEST SCORE.
 - Then press: +1,+2, or +3.
9. To toggle **POSSESSION** between HOME/GUEST:
 - Press POSS.
10. To toggle between “**BONUS**”: No Bonus (0); Single Bonus (1); and Double Bonus (2).
 - Press HOME BONUS or GUEST BONUS.
11. To set **TIME OUT**
 - Press HOME TIME OUT or GUEST TIME OUT.
 - Toggles On or Off.
12. (Optional) To set **Shot Clock**:
 - Press SHOT CLOCK SET.
 - Enter “shot clock” length on the numeric keypad. Press Enter.
 - **NOTE:** if not using the shot clock, set the shot clock time to zero.
13. (Optional) To Reset **Shot Clock**:
 - Press SHOT CLOCK RESET.
14. To set **SHIFT TIMER (IF ENABLED)**:

NOTE: The **SHIFT TIMER** counts down from the set amount. When the **SHIFT TIMER** is expired a one second horn will sound, then the **SHIFT TIMER** will reset and start counting down again.

 - **Press SHIFT.**
 - Enter the shift time settings in minutes using the numeric keypad. **Press ENTER.**
 - To edit the current running shift time **Press SHIFT.** Then **SHIFT** again. Enter the minutes using the numeric keypad. **Press ENTER.** Enter the seconds using the numeric keypad. **Press ENTER.**

NOTE: On power up, the shift time will be 0:00, which leaves it in an inactive mode which means no horns will sound.

Free Manuals Download Website

<http://myh66.com>

<http://usermanuals.us>

<http://www.somanuals.com>

<http://www.4manuals.cc>

<http://www.manual-lib.com>

<http://www.404manual.com>

<http://www.luxmanual.com>

<http://aubethermostatmanual.com>

Golf course search by state

<http://golfingnear.com>

Email search by domain

<http://emailbydomain.com>

Auto manuals search

<http://auto.somanuals.com>

TV manuals search

<http://tv.somanuals.com>