

# NexStar·CX

EXTERNAL 3.5" HARD DRIVE ENCLOSURE  
USB 2.0 INTERFACE

## Owner's Manual

Model: **NST-300S2-BK**

[www.vantecusa.com](http://www.vantecusa.com)

SATA to USB 2.0

All Registered Trademarks Belong To Their Respected Companies.

Copyright © 2007 Vantec Thermal Technologies. All Rights Reserved.



NexStar·CX

### 1. Introduction

Vantec introduces its NexStar CX 3.5" SATA External Hard Drive Enclosure. Ideal for anyone in need of storing and transferring large amounts of data, the NexStar CX is a convenient way of upgrading storage to your computer. The NexStar CX turns any internal 3.5" SATA Hard Drive into an external hard drive that can be used on any system with a USB port. In addition, the aluminum casing protects the drive from overheating and vibration. The NexStar CX supports USB 1.1 and USB 2.0 to offer fast transfer speeds of up to 480Mbps. The Vantec NexStar CX 3.5" SATA External Hard Drive Enclosure is great for anyone who requires a high performance, lightweight, and durable external storage solution.

### 2. System Requirements

Intel Pentium II 350 MHz Compatible or Mac G3 Processor & Greater  
Microsoft Windows 98SE/ME/2000/XP/Vista or Mac OS 8.6 & Greater  
USB-Equipped System  
For USB 2.0 Speeds, the System Must Support USB 2.0 Specifications

1

NexStar·CX

### 3. Specifications/Features

#### Features :

- Aluminum Casing Cools Down Your Hard Drive.
- Transfer Rates Up to 480Mbps w/USB 2.0.
- Easily Add Storage to Any System with USB.
- Hot-Swappable: Plug & Play Without Rebooting.
- Attractive Blue LED Indicates Power & HDD Activity.

#### Specifications :

- Device Support : SATA I/II Hard Drive
- Device Size : 3.5"
- Internal Interface : SATA
- External Interface : USB 2.0
- Material : Aluminum
- Dimension : 215 x 123 x 31mm

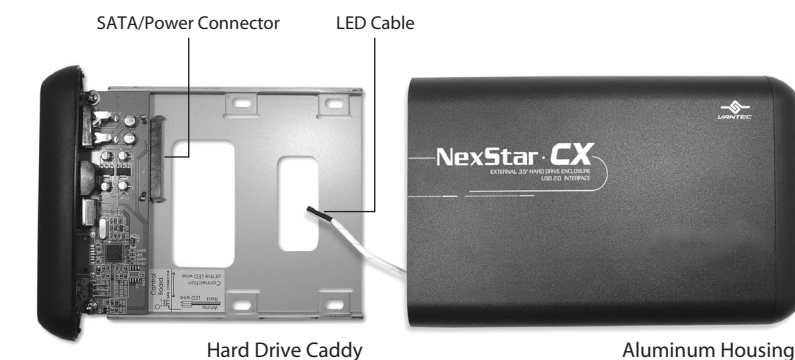
#### Package Includes :

- 3.5" NexStar CX Enclosure
- Power Adapter
- USB Cable
- User Manual
- Installation Screws
- Vertical Stand

2

NexStar·CX

### 3. Parts Layout



3

NexStar·CX

### 4. Installation

4-1 Connect the 3.5" hard drive to the SATA/Power connector.

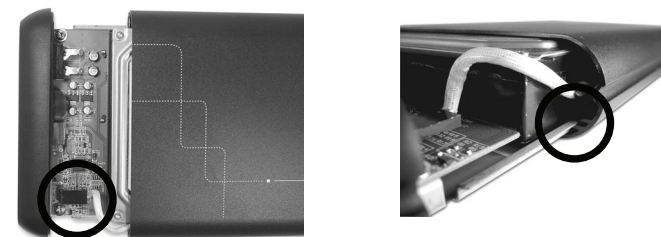
4-2 Secure the hard drive onto the drive caddy with the screws provided. See picture below for where the screws are to go.



4

NexStar·CX

4-3 Insert the drive caddy back into the aluminum housing. Be sure to reconnect the LED cable before closing the unit. When reinserting the caddy, also be sure to align the top of the caddy with the guides on the housing.



5

NexStar·CX

4-4 Secure the caddy to the housing using the screws provided.



6

NexStar·CX

### 5. Warranty

The Nexstar CX comes with a 1 year limited warranty (90 day parts). If your unit become defective within that time frame, please go to <http://www.vantecusa.com> for information on how to receive warranty exchange or repair. Cosmetic defects and missing parts are not covered under this warranty. Please check the contents of the unit to make sure you received all parts. Also, check for any cosmetic flaws. If any parts are missing or if there are cosmetic defects, please contact the retailer from which you purchased the unit immediately and ask for a replacement.

#### Vantec Thermal Technologies

43951 Boscell Rd.  
Fremont, CA 94538  
tel: 510-668-0368  
fax: 510-668-0367  
website: [www.vantecusa.com](http://www.vantecusa.com)

7

## Free Manuals Download Website

<http://myh66.com>

<http://usermanuals.us>

<http://www.somanuals.com>

<http://www.4manuals.cc>

<http://www.manual-lib.com>

<http://www.404manual.com>

<http://www.luxmanual.com>

<http://aubethermostatmanual.com>

Golf course search by state

<http://golfingnear.com>

Email search by domain

<http://emailbydomain.com>

Auto manuals search

<http://auto.somanuals.com>

TV manuals search

<http://tv.somanuals.com>