

Portable MPEG4 Player

Manual



Contents

| | |
|--|-----------|
| Introduction..... | 3 |
| Specifications | 3 |
| Precautions..... | 4 |
| System Requirements..... | 4 |
| Package Content | 4 |
| Product Overview | 5 |
| 1. Use as External USB HDD..... | 6 |
| 1.1 Insert Hard Disk..... | 6 |
| 1.2 Format Built-in HDD via USB | 7 |
| 1.2.1 Windows 98SE, ME..... | 7 |
| 1.2.2 Windows 2000..... | 9 |
| 1.2.3 Windows XP | 11 |
| 1.3 Copy Data via USB | 13 |
| 1.3.1 Windows 98SE..... | 13 |
| 1.3.2 Windows ME..... | 14 |
| 1.3.3 Windows 2000, XP | 15 |
| 1.3.4 Linux | 16 |
| 1.3.5 Mac | 16 |
| 2. Use as Multimedia Player | 17 |
| 2.1 Connect to External AV Device | 17 |
| 2.1.1 Connect Video Cable | 17 |
| 2.1.2 Connect Audio Cable | 18 |
| 2.1.3 Connect External IR Receiver..... | 18 |
| 2.2 Basic Setup | 19 |
| 2.2.1 Video Setup | 19 |
| 2.2.2 Audio Setup | 21 |
| 2.2.3 Other Setup | 22 |
| 2.2.3.1 TV Type Setup | 22 |

| | |
|---------------------------------------|-----------|
| 2.2.3.2 Jpeg File Preview Setup | 22 |
| 2.2.3.3 Language Selection Setup..... | 22 |
| 2.2.3.4 Check Firmware Version..... | 22 |
| 2.3 Basic Screen Menu | 23 |
| 2.3.1 Media Type Selection | 23 |
| 2.3.2 File Selection..... | 23 |
| 2.4 Play Video Files | 24 |
| 2.5 Play DVD Files..... | 27 |
| 2.6 Play Music Files..... | 29 |
| 2.7 Play Photo Files..... | 31 |
| 2.8 Make a Play-List..... | 33 |
| 2.9 Remote Controls..... | 34 |
| 2.10 Others | 35 |
| 2.10.1 Music Slide Show | 35 |
| 2.10.2 MP3 Quick Play | 35 |
| 2.10.3 Change Background Image | 35 |
| 2.10.4 Change OSD Text Color | 35 |
| 2.10.5 Firmware Upgrade | 35 |
| <i>Technical Support.....</i> | 35 |

Introduction

Portable Mpeg4 Player is 2.5" HDD interface type of MPEG4 player based on USB 2.0 High Speed. It can be connected to TV in home or a monitor. It is not only an external USB HDD but also the best portable AV device that displays Music, Movie and photo.

- Digital Multimedia Player via Home TV or Car TV
- USB 2.0 External Storage via PC(NTFS, FAT32)
- Audio - Stereo, Digital Coaxial 5.1ch. Sound
- Video - Composite, HD Component 480p, 720p, 1080i
- DVD Manager - Playback of DVD File same as Original DVD Title
- Easy Firmware Upgrade.

Specifications

| | | |
|---------------------|---|--|
| Product Name | Portable Mpeg4 Plyaer | |
| Power | DC 5V / 2A | |
| Weight | 160g (without HDD) approx. | |
| Dimension | 80 x 148 x 24 mm approx. | |
| Available OS | Windows 98SE/ME/2000/XP, Mac OS 9.0 Higher, Linux 2.4 Higher | |
| USB Interface | 480Mbps USB 2.0 (USB 1.1 Compatible) / Slave | |
| HDD Type | 2.5" IDE HDD | |
| HDD File System | NTFS / FAT32 | |
| TV Type | NTSC / PAL | |
| Supported Format | Movie | MPEG 1, 2, 4 (MPG, MPEG, AVI, M2V, DAT, VOB, IFO etc.) DivX, XviD (except GMC, Qpel option applied) |
| | Music | MP3, OGG Vorbis, WAV, WMA (except WMA9 pro.lossless) |
| | Photo | JPG(JPEG) |
| Video Output | COMPOSITE COMPONENT Y, Pb, Pr (480p, 720p, 1080i Progressive Scan) | |
| Audio Output | STEREO L-R DIGITAL COAXIAL (DTS Pass-Through Only) | |
| External IR | Support (Optional) | |
| Working Temperature | 0°C ~ 60°C | |
| Working Humidity | 10% ~ 50% | |

Precautions

- We strongly recommend you to back up the data to another safe media. We are not responsible for data damage or loss in built-in HDD.
- It's better unplug the power adaptor when you do not use for a long time.
- The Mpeg4 Player does not support the DivX, XviD codec of video files that has GMC, Qpel option.
- The Mpeg4 Player supports only "Pass-Through" for DTS Audio codec.
- Don't power off while a file is playing.
- If the length of USB cable is too long, it may not be connected smoothly (Recommend: up to 3 meters)
- If you have USB 1.1 Host Adapter, Mpeg4 Player is working at USB1.1 speed. Mpeg4 Player
- On less than 6GB HDD, data damage or loss may be caused. We recommend you to use more than 6GB HDD.
- [Very Important] : If unformatted HDD is insert into Mpeg4 Player, a PC can not detect the HDD. Make sure that the HDD is formatted.
- Be careful of dropping or impact or shock. If a HDD is damaged by dropping, impacting, shocking, then contact manufacturer or the seller.
- We recommend you to use the all supplied cables or accessories that are customized for the best performance of Mpeg4 Player. Using other cables or accessories may not support the best performance.
- [Very Important] : Be away from water, heavy moisture. If Mpeg4 Player has a liquid, unplug from a PC or Power right away. If you use Mpeg4 Player under this condition, the HDD may be fired or you may have electric shock.
- Don't touch Mpeg4 Player by wet hands. It may cause electric shock.
- Be away from heat, a direct ray of light.
- Be away from devices that transmit strong magnetic signal. It may cause data damage or loss on HDD.
- Don't disassemble as the user's own accord. It may cause Mpeg4 Player damaged or loose the data.

System Requirements

- Interface : 480Mbps USB 2.0 High-Speed (USB 1.1 compatible)
- Power Supply : USB Bus Power or DC Power
- Available OS : Windows 98SE/ME/2000/XP, MAC 9.0 higher, Linux 2.4 higher
- Available System : Desktop / Laptop PC that has USB port(s)

Package Content

Primary Package

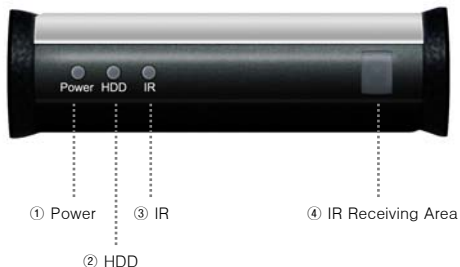
- Mpeg4 Player ▪ Remote Control & Battery ▪ USB Cable ▪ AV Cable(Composite + Stereo L-R),
- Component Video Cable ▪ Coaxial Audio Cable ▪ Power Adapter ▪ Windows 98 Driver CD ▪ User Manual

Optional Package

- External Remote Control IR Receiver ▪ Cigar Jack Lighter

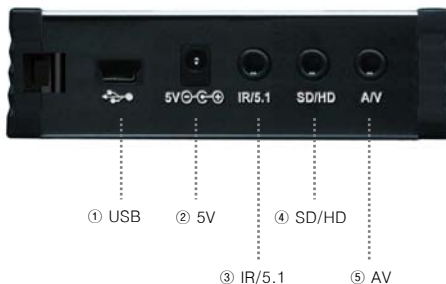
Product Overview

- Front View -



| | | |
|------------|---------------------|--------------------------------------|
| Front View | ① Power | Power LED |
| | ② HDD | HDD LED |
| | ③ IR | IR LED |
| | ④ IR Receiving Area | IR receiving area for remote signals |

- Back View -



| | | |
|-----------|----------|--|
| Back View | ① USB | Connect USB cable |
| | ② 5V | Connect power Cable |
| | ③ IR/5.1 | Connect coaxial cable for 5.1 ch. digital audio output (or Connect external remote control IR receiver) |
| | ④ SD/HD | Connect component Y, Pb, Pr cable for video output |
| | ⑤ AV | Connect AV cable for composite video and(or) Stereo audio output |

1. Use as External USB HDD

1.1 Insert Hard Disk

- ✓ Use 2.5" IDE Hard Disk for Laptop(or Notebook) PC.
- ✓ Hard Disk should be "Master". However, if the Hard Disk supports "Single" mode, you need to try to set "Single" mode.



① Grip the hasp and pull back the front panel, and then open the top cover.



② Pull the PCB out.



③ Grip HDD and insert it into the pins of PCB (be sure to match the 44 pins)



④ Screw HDD on PCB by using the supplied screws.



⑤ Insert the PCB into the case, and then close the top cover and front panel.

1.2 Format Built-in HDD via USB

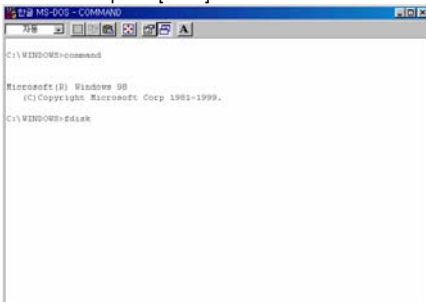
If the built-in HDD is not formatted, PC can not detect the hard disk drive. If so, format the hard disk first referring to the following guide. * If the hard disk drive is already formatted, see "1.3 Copy Data via USB".

1.2.1 Windows 98SE, ME

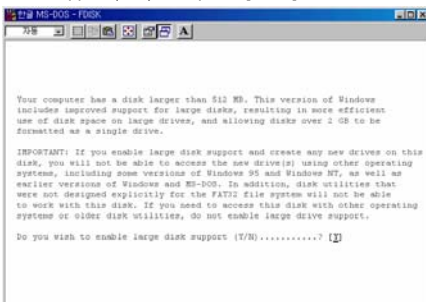
1) Install Windows 98 Driver. Find the driver at Windows 98 CD→Windows 98 Driver Directory. After finishing installation, Connect Mpeg4 Player to PC via USB cable. (If not detected, plug power cable of Mpeg4 Player)

2) Select [Start→Program→Accessories→MS-DOS Prompt] on Windows.

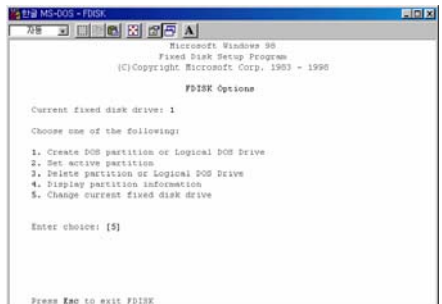
3) Type "fdisk" command at Command Prompt window and press [Enter].



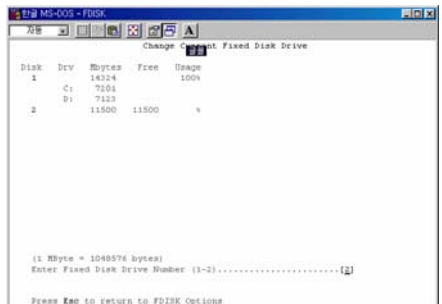
4) Type the "Y" at the "Do you wish to enable large disk support (Y/N)" and press [Enter].



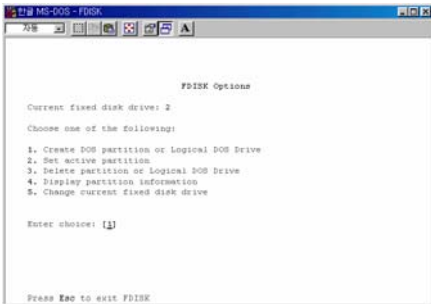
5) Select "5. Change current fixed disk drive" and press [Enter].



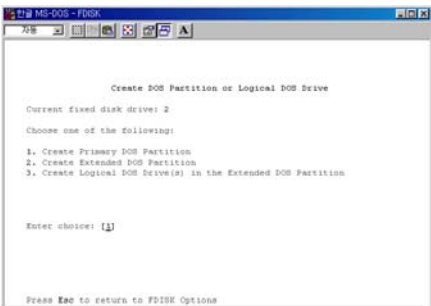
6) Type the last Disk number in 0% usage.



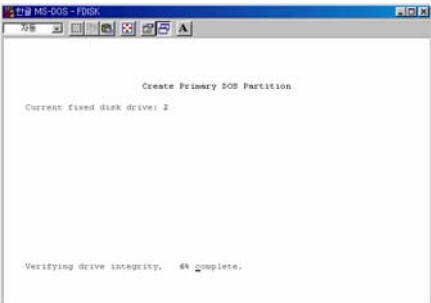
7) Select "1. Create DOS partition or Logical DOS Drive" and press [Enter].



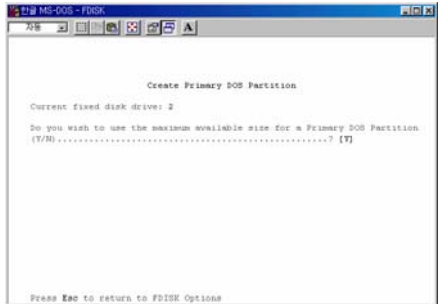
8) Select " 1. Create Primary DOS Partition " and press [Enter].



9) Wait until finishing verifying the drive integrity.

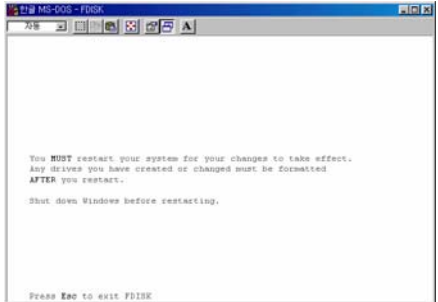


10) After finishing drive integrity verification, type "Y" at "Do you wish to use the maximum available size for a Primary DOS Partition (Y/N)".

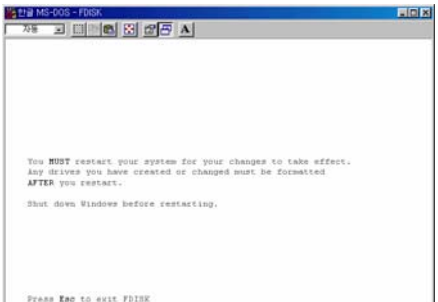


11) Type the capacity or % which you want to use and press [Enter].

12) Drive integrity verification will start again. After finishing that, press [ESC] key when the "Primary DOS Partition created, drive letters changed or added" message displays.

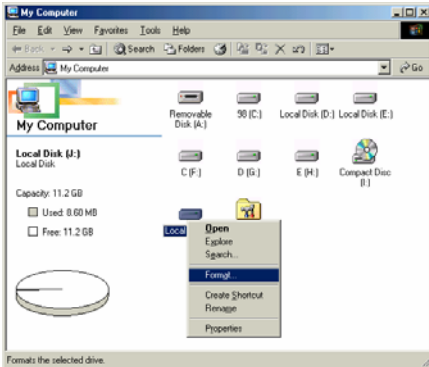


13) Press [ESC] key again. " Shut down Windows before restarting" message will be displayed. Press [ESC] key finally for exiting FDISK.



14) Type " exit " command at " C:WINDOWS> " and press [Enter] for returning to windows screen.

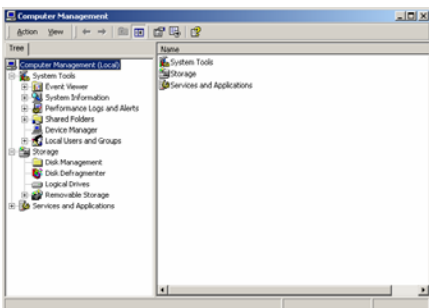
15) Unplug the Mpeg4 Player and plug again. New volume will be appeared at [My Computer]. Click mouse right button at the new volume and select [Format].



1.2.2 Windows 2000

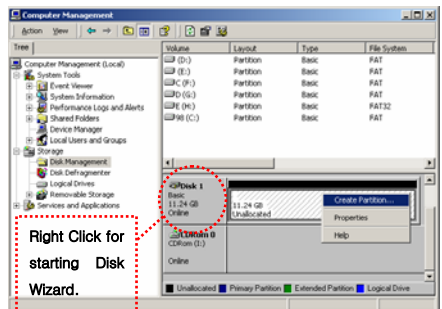
1) Connect Mpeg4 Player to PC via USB cable.
(If not detected, plug power cable of Mpeg4 Player)

2) Select [Start → Settings → Control Panel → Administrative Tools → Computer Management → **Disk Management**] on Windows.

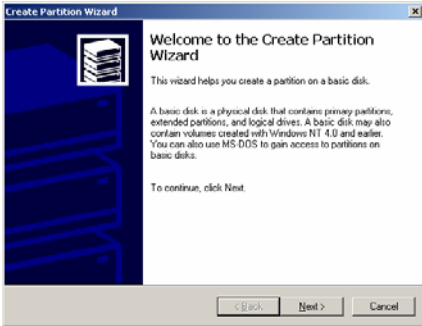


3) If the [Disk Signature and Upgrade Disk Wizard] is started, click Next to progress for finishing the wizard. If this wizard not started, right click the left area of unallocated drive at no. 4 figure, and start the wizard.

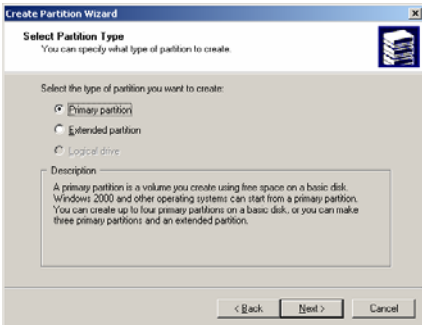
4) After finishing the [Disk Signature and Upgrade Disk Wizard], Right-click the Unallocated Drive. And then, click [**Create Partition**].



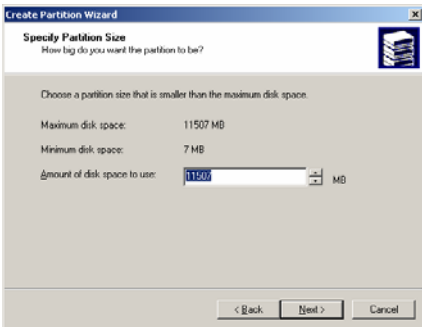
5) Click [Next] at the Create Partition Wizard Windows.



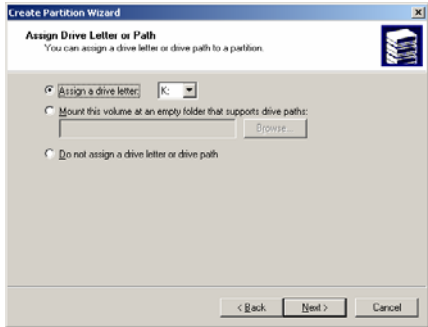
6) Check [Primary Partition] and click [Next].



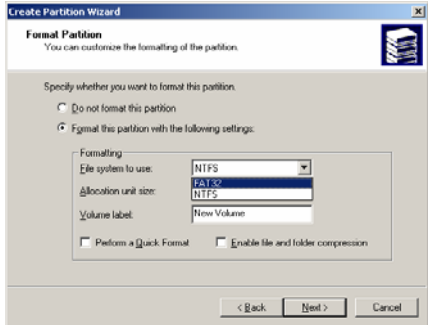
7) Type number that you want to use and click [Next].



8) Assign a drive letter and click [Next].



9) Choose FAT32 or NTFS at File system to use and click [Next].



✓ FAT 32 system is available on windows 98SE/ME/2000/XP, but NTFS system is available on windows 2000/XP only.

✓ If you choose FAT32 system on Windows 2000/XP, one drive letter's maximum size will be limited to 32GB. If you want to use one drive letter of 32GB more, you have to format on windows 98SE/ME.

✓ If you want to create two or more partition with one disk drive, it will be recommended "Primary Partition"

10) After finishing Wizard setup, formatting will be progressed automatically.

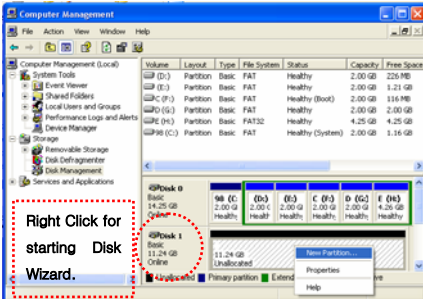
1.2.3 Windows XP

1) Connect Mpeg4 Player to PC via USB cable.
(If not detected, plug the power cable of Mpeg4 Player)

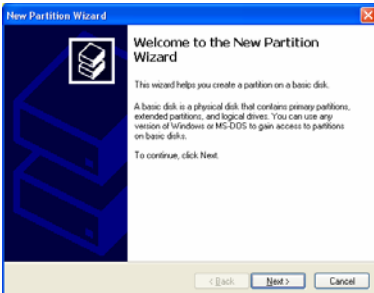
2) Click [Settings→Control Panel→ Administrative Tools→Computer Management→Disk Management] on Windows. If you can not find Administrative Tools at Control Panel, click “ switch to classic view ” in left – up corner on screen.

3) If the [Disk Signature and Upgrade Disk Wizard] starts, click [Next] to progress for finishing the wizard. If this wizard not started, right click the marked left area of unallocated drive at no 4. figure and start the wizard.

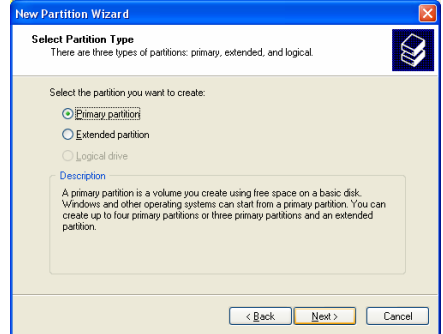
4) After finishing the [Disk Signature and Upgrade Disk Wizard], Right-click the 'Unallocated' Drive. And then, click [Create Partition].



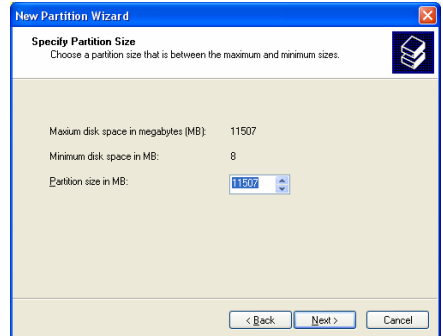
5) Click [Next] at the New Partition Wizard.



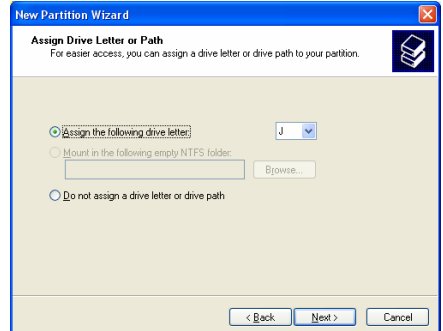
6) Check [Primary Partition] and click [Next].



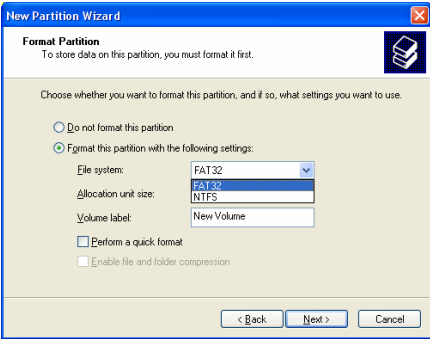
7) Type number that you want to use and click [Next].



8) Assign a drive letter and click [Next].



9) Choose FAT32 or NTFS at File system to use and click [Next].



- ✓ FAT 32 system is available on windows 98SE/ME/2000/XP, but NTFS system is available on windows 2000/XP only.
- ✓ If you choose FAT32 system on Windows 2000/XP, one drive letter's maximum size will be limited to 32GB. If you want to use one drive letter of 32GB more, you have to format on windows 98SE/ME.
- ✓ If you want to create two or more partition with one disk drive, it will be recommended "Primary Partition"

10) After finishing Wizard setup, formatting will be progressed automatically.

1.3 Copy Data via USB

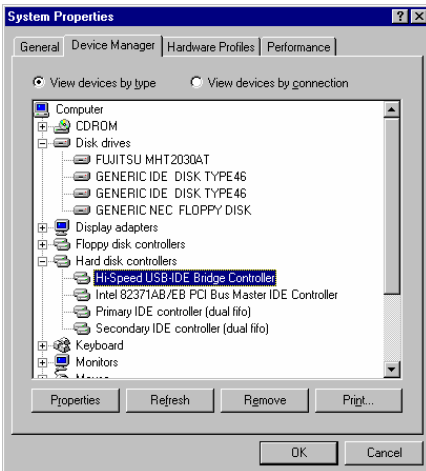
It is possible to use as a external USB hard disk drive.. You can copy data from your PC to built-in HDD of Mpeg4 Player via USB. It is possible to play media files at the hard disk on TV set.

*** If not detected when connecting PC, recommend to connect power cable of Mpeg4 Player.**

1.3.1 Windows 98SE

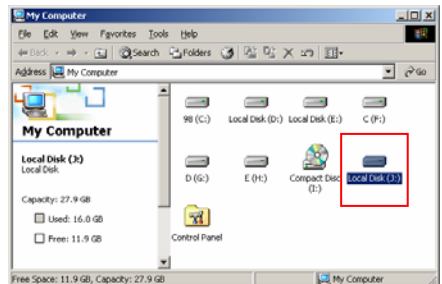
✓First, you have to install Windows 98 Driver before connecting PC. Find the driver at Windows 98 driver CD > Windows 98 Driver Directory. After finishing installation, Connect Mpeg4 Player to PC via USB cable. If not detected, plug power cable of Mpeg4 Player.


1) After installing the driver, connect Mpeg4 Player. And then, check the driver installation at Windows [Start→Settings→Control Panel→System →Device Manager→Hard disk controllers→Hi-Speed USB-IDE Bridge Controller].

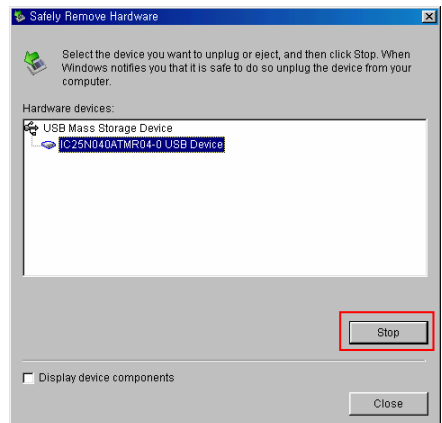


2) Check 'My Computer' or 'Explorer', there should be a new volume. You can copy any data to this volume.

✓If a new volume is not be appeared, check HDD format or not, and HDD file system. Windows 98SE only detect FAT32 file system. Or connect power cable of Mpeg4 Player.

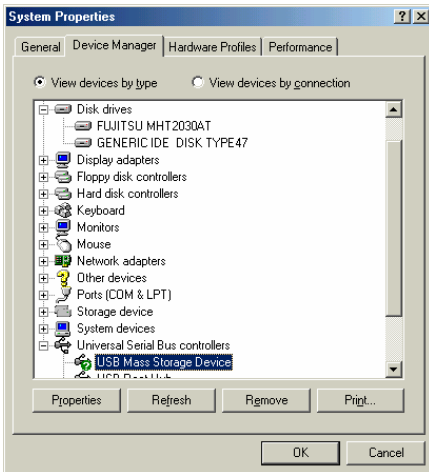


3) After copying data, remove Mpeg4 Player with using remove icon  at Windows right-down corner. If you don't follow this procedure, data and Mpeg4 Player may have damage.

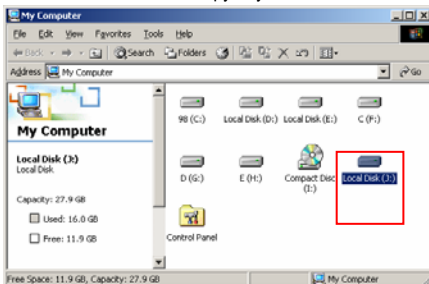


1.3.2 Windows ME


1) After connecting Mpeg4 Player, windows itself will install driver automatically. And then, check the driver installation at Windows [Start > Settings > Control Panel > (view all Control Panel options) > System > Device Manager > Universal Serial Bus controllers > USB Mass Storage Device]

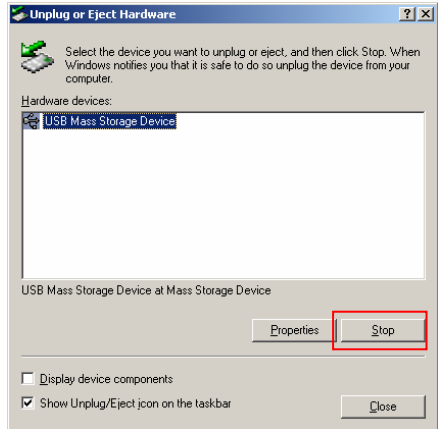


2) Check 'My Computer' or 'Explorer', there should be a new volume. You can copy any data to this volume.



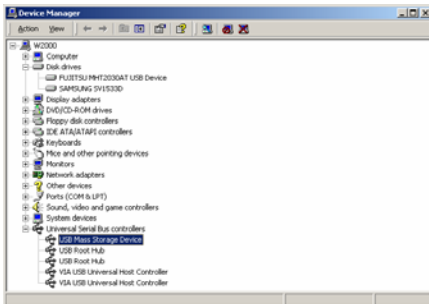
✓ If a new volume is not be appeared, check HDD format or not, and HDD file system. Windows ME only detect FAT32 file system. Or connect power cable of Mpeg4 Player.

3) After copying data, remove Mpeg4 Player with using remove icon  at Windows right-down corner. If you don't follow this procedure, data and Mpeg4 Player may have damage.

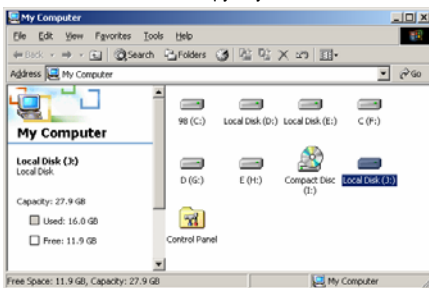


1.3.3 Windows 2000, XP


1) After connecting Mpeg4 Player, windows itself will install driver automatically. And then, check the driver installation at Windows [Start > Settings > Control panel > (switch to classic View on Windows XP) > system > Hardware > Device manager > Universal Serial Bus controllers > USB Mass Storage Device].

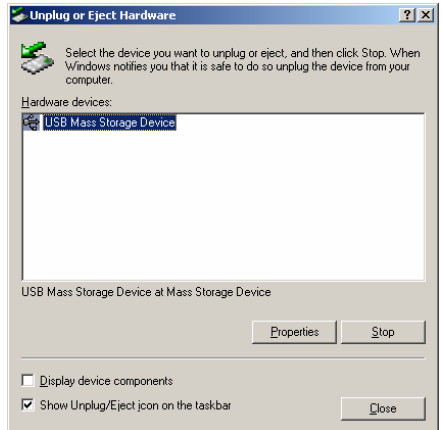


2) Check 'My Computer' or 'Explorer', there should be a new volume. You can copy any data to this volume.



✓If new volume is not be appeared, check HDD format or not. and HDD file system. Windows 2000, XP detect both FAT32 and NTFS file system. Or connect power cable of Mpeg4 Player.

3) After copying data, remove Mpeg4 Player with using remove icon  at Windows right-down corner. If you don't follow this procedure, data and Mpeg4 Player may have damage.



✓When you see 'Non High-Speed USB Hub Message' The message will be displayed On windows XP when you plug Mpeg4 Player into USB 1.1 spec. Host adapter.

1.3.4 Linux

✓It can be available on Linux 2.4 higher.

[Automatic Mount]

After booting, do log-in.

Connect Mpeg4 Player -> Power On Mpeg4 Player -> Check the detection with [fdisk] -> make Mount Pointer (ex. mediatest) at Folder Mount(/mnt) -> Edit [/etc/fstab] -> add the following;

```
/dev/sda /mnt/mediatest vfat noauto, user 0 0 (in case of FAT32 HDD)
```

```
/dev/sda /mnt/mediatest ntfs noauto, user 0 0 (in case of NTFS HDD)
```

Do Log-in again.

✓above example "sda" is assumed that the Mpeg4 Player will be detected as "sda" on your system. If not, you have to write the drive name which is detected as "USB Mass Storage", not "sda"

[Manual Mount]

Connect Mpeg4 Player -> Power On Mpeg4 Player -> Check the detection with [fdisk] -> make Mount Pointer (ex. mediatest) at Folder Mount(/mnt) -> Edit [/etc/fstab] -> add the following;

```
mount -t vfat /dev/sda /mnt/mediatest (in case of FAT32 HDD)
```

```
mount -t ntfs /dev/sda /mnt/mediatest (in case of FAT32 HDD)
```

✓above example "sda" is assumed that the Mpeg4 Player will be detected as "sda" on your system. If not, you have to write the drive name which is detected as "USB Mass Storage", not "sda"

[How to stop using]

Do [umount] at Device Control.

1.3.5 Mac

✓It can be available on Mac 9.0 higher.

No need to install the installation driver at Mac OS 9.x version and the Mpeg4 Player will be detected automatically. If the Mpeg4 Player is detected correctly, an icon is appeared at a monitor.

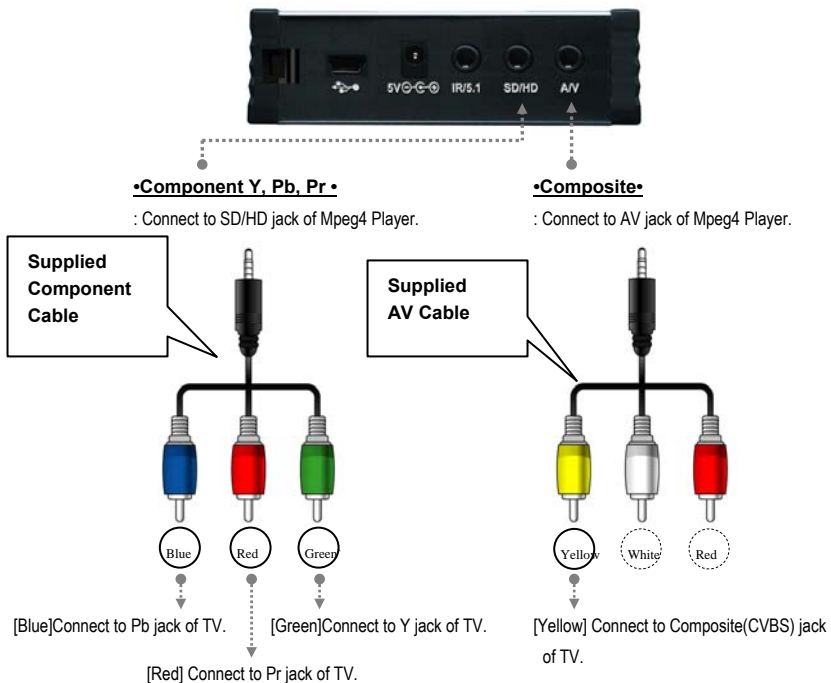
When removing Mpeg4 Player safely, drag the icon to a trash and unplug Mpeg4 Player.

2. Use as Multimedia Player

2.1 Connect to External AV Device

2.1.1 Connect Video Cable

Mpeg4 Player supports 2 type of video output; "Composite, Component". Use video connection that your TV supports. Normally, TV supports composite video connection. **Do not connect USB cable when connecting TV.**

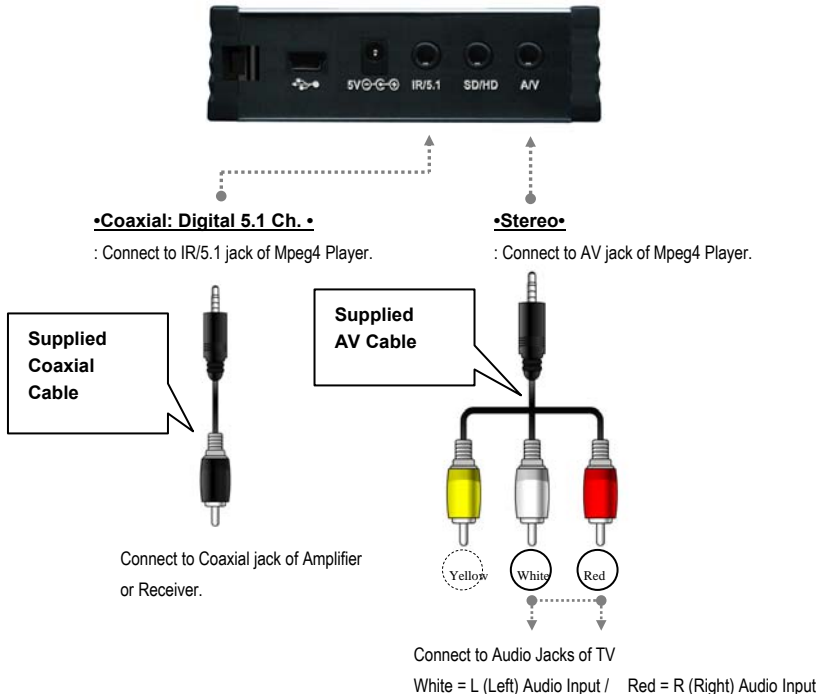


✓ When you can not see normal screen after connecting video cable, check followings,

1. "TV" – Switch to Video Input Mode: Turn on TV, and switch to video input mode same as video connection. See TV user manual.
2. "Mpeg4 Player" – Switch to Video Output Mode: Press [VIDEO] button repeatedly. Whenever press [VIDEO], video output signal is changed.
3. After you see normal screen, you have to save video configurations of Mpeg4 Player. See "2.2.1 Video Setup".

2.1.2 Connect Audio Cable

Mpeg4 Player supports 2 type of audio output; "Stereo, Coaxial". Use audio connection that your TV or Audio set supports. **Do not connect USB cable when connecting TV.**



✓When you can not hear sound after connecting Coaxial Cable, you have to change audio setup of Mpeg4 Player as Encoded Digital. See "2.2.2 Audio Setup"

2.1.3 Connect External IR Receiver

External IR Receiver is optional package, not primary one.

Connect the external IR receiver to IR/5.1 jack of Mpeg4 Player instead of Coaxial cable. External IR Receiver and Coaxial cable are not used at the same time.

2.2 Basic Setup

2.2.1 Video Setup

This is guide for setting video output of Mpeg4 Player. You have to setup Mpeg4 Player's video output mode same as TV set's video input mode.

✓When you can not see normal screen after connecting video cable, check followings,

1. "TV " – Switch to Video Input Mode: Turn on TV, and switch to video input mode same as video connection. See TV user manual.
2. "Mpeg4 Player" – Switch to Video Output Mode: Press [VIDEO] button repeatedly. Whenever press [VIDEO], video output signal is changed.
3. After you see normal screen, you have to save video configurations of Mpeg4 Player.

| TV Video Input Mode | Mpeg4 Player Video Output Mode | Connection Jack of TV, Mpeg4 Player | Video Cable Type |
|--|--|---|---|
| Normal Video | TV Out: NTSC C/S-Video (HD Component OFF) | CVBS or Composite Jack (Generally Yellow Jack) | Supplied AV Cable |
| | TV Out: PAL C/S-Video (HD Component OFF) | | |
| S-Video | Not supported | - | - |
| | Not supported | | |
| Component 480i | TV Out: NTSC C/YPbPr (HD Component OFF) | Component 3 Jack * Y(Green), Pb(Blue), Pr(Red) | Supplied Component Cable * Y(Green), Pb(Blue), Pr(Red) |
| | TV Out: PAL C/YPbPr (HD Component OFF) | | |
| Component 480p | HD Component Out On 480p | | |
| Component 720p | HD Component Out On 720p | | |
| Component 1080i | HD Component Out On 1080i | | |
| ✓NTSC, PAL : Standard of TV Output. Select a proper one for using in your country. | | | |

< Setup Procedure >



① Turn on Mpeg4 Player and press [SETUP] on Media Type Selection screen.

② Move to 'Video Setup' icon and press [ENTER].

③ Move to Video Output Mode that you want and press [ENTER].

④ Finally, press [SETUP] again for saving configurations.



Example of component video output settings.

2.2.2 Audio Setup

This is guide for setting audio output of Mpeg4 Player. You can use Stereo or Digital 5.1 ch..

- ✓ Analogue/DCPM: Select when you connect the supplied AV cables (Red / White) to TV or Audio set directly.
- ✓ Encoded Digital: Select when you want to listen through 5.1Ch by connecting receiver (or amplifier) with supplied coaxial cable.

<Setup Procedure>



① Turn on Mpeg4 Player and press [SETUP] in MediaType Selection screen.

- ② Move to 'Audio Setup' icon and press [ENTER].
- ③ Move to Audio Output Mode that you want and press [ENTER].
- ④ Finally, press [SETUP] again for saving configurations.

2.2.3 Other Setup

This is guide for setting TV Type, JPEG File Preview, Language Selection. In addition, current firmware version shows.

<Setup Procedure>



① Turn on Mpeg4 Player and press [SETUP] in MediaType Selection Screen.

② Move to 'Other Setup' icon and press [ENTER].

③ Move to settings that you want and press [ENTER].

④ Finally, press [SETUP] again for saving configurations.

2.2.3.1 TV Type Setup

Select one among 4:3 Letter Box, 4:3 Pan Scan, or 16:9.

2.2.3.2 Jpeg File Preview Setup

It is possible to enable or disable preview the photo file as a thumbnail image before playing.

2.2.3.3 Language Selection Setup

Select one language among English, German, Spanish, French, Italian, Portuguese, Danish, Swedish, or Dutch. User interface language will be changed according to the language.

2.2.3.4 Check Firmware Version

Current Firmware version will be displayed on the Other Setup screen.

2.3 Basic Screen Menu

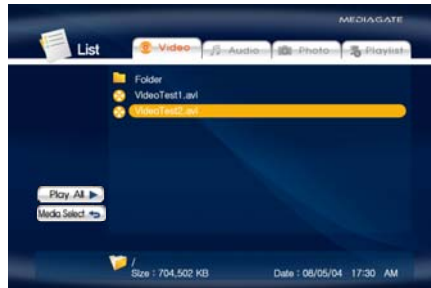
2.3.1 Media Type Selection

After turning on Mpeg4 Player, you can see Media Type Selection screen. In this screen, you can select "Video", "Audio", "Photo" or make "Play-List" with ◀▶ arrow button. Press [ENTER]. Select one media type that you want to play.



2.3.2 File Selection

After selecting a Media type, 'File Selection' screen will be displayed. Move to a file that you want to play and press [ENTER] or [PLAY/PAUSE].



- ☞ **[ENTER] button** Play one file that you select. After finishing playback, return to 'file selection screen'.
- ☞ **[PLAY/PAUSE] button** After playing the file that you select, play next all files continuously.
- ☞ **▲ ▼ button** Move to files with pressing ▲ ▼ arrow buttons.
- ☞ **◀ button** Move to left icon with pressing ◀ arrow button. Press ▶ button in order to return to file selection screen.
- ☞ **NEXT ▶▶I, PREVI ◀◀ button** Move to Next or Previous page when there is too many files to list on one screen.

☞ Left Icon Descriptions

| | |
|--------------|--|
| Play All | After the file that you select, play next all files continuously. It is same as [PLAY/PAUSE] button. |
| Media Select | Go to Media Type Selection directly. |

2.4 Play Video Files

It is possible to play video files like AVI, MPG, MPEG, DAT, M2V, and VOB.

Select 'Video' icon in Media Type Selection screen. Video file list will be displayed. Just move to a file and press [ENTER] or [PLAY/PAUSE] button.



Select 'Video' icon in Media Type Selection screen.



Move to a file and press [ENTER] or [PLAY/PAUSE] button. Press [ENTER] for playing just the file or [PLAY/PAUSE] for playing all files from the selected file.



< Function and Button Descriptions >

| Remote Control | Function | Descriptions |
|----------------|-------------------------|---|
| AUDIO | Dual Audio | It is possible to switch each audio language when the audio format is dual-audio, for example, including a local language and English. |
| SUBTITLE | Subtitle Move& Size | It is possible to change subtitle size and location. ◀▶ arrow button changes size and ▼▲ arrow button changes location. After doing, press [ENTER]. |
| | Subtitle Select or Hide | The subtitle name same as video file is displayed on screen automatically. However, it is possible to open the other preferable subtitle files or hide. |

| | | |
|------------------------------|--|--|
| | Subtitle Language Select | It is possible to switch each subtitle language when the subtitle is dual language format, for example, including a local language and English. * When selecting 'Discriminating subtitle language', first subtitle language will be displayed. |
| | Subtitle Sync. | It is possible to set the subtitle sync. with ◀▶ (one second) ▼▲ (60 second) when motion and subtitle sync is not matched. |
| 4, 5, 6 Number Button | Subtitle Color Change | Subtitle color is changed when pressing number 4, 6 button. In order to return default color (white), press number 5. |
| Scr. SIZE | Zoom Vertical | Zoom screen vertically. |
| | Zoom Full | Enlarge the overall screen. |
| | Custom | Enlarge or reduce the screen by ▲▼◀▶ arrow buttons. |
| | Default | Return to original screen size and position. |
| | Screen Position | Move the screen to the direction with ▼▲◀▶ arrow buttons. Press [Brt.Cont] key for returning to the original screen position when applying Screen position. |
| TIME SEARCH | Jump to Preferable Playback Time | Move to a selected time of a file. |
| CANCEL | Delete Input Numbers | In time search box, this button deletes all numbers in 0. |
| Brt. CONT | Control luminosity, color depth, brightness | When pressing this button, 3 modes switch. After selecting a mode, change settings with ◀▶ arrow buttons. |
| FILE INFO | Show File Information | Show the file information which is being played. In order to hide the information, press this button again. |
| FF ▶▶ | Fast Forward | Whenever pressing this button, play speed is changed with 8x, 16x, 32x in forward. |
| ▶ arrow button | | |
| REW ◀◀ | Rewind | Whenever pressing this button, play speed is changed with 8x, 16x, 32x in backward. |
| ◀ arrow button | | |
| VOLUME + | Volume Up | Volume up. |
| ▲ arrow button | | |
| VOLUME - | Volume Down | Volume down. |
| ▼ arrow button | | |
| MUTE | Sound Off | Mute the sound. In order to hear sound, press this button again. |
| ENTER | Playback a File | Play a file. After finishing playback, return to file selections screen. |

| | | |
|----------------------------------|--|---|
| PLAY / PAUSE ▶ | Playback Next All Files | After the file that you select, play next all files continuously. It is same as [PLAY/PAUSE] button. |
| PLAY / PAUSE ▶ | Pause | Pause playback, if pressing this button when a file is being played. In order to play again, press this button again. |
| PREV ◀◀ | Playback Previous File | Play a previous file before a current playback file. If you used [ENTER] for playback, you can not use this function. This is available in playing all files as using [PLAY/PAUSE] button or 'Play All' icon. |
| NEXT ▶▶ | Playback Next File | Play a next file after a current playback file. If you used [ENTER] for playback, you can not use this function. This is available in playing all files as using [PLAY/PAUSE] button or 'Play All' icon. |
| 0 Number button | Screen Reset | If a frame of a video file is broken, green color runs on a overall screen. Press number [0 "Zero"] for screen reset. |

2.5 Play DVD Files

DVD manager function support to play DVD Ripping File same as original DVD.

Make a folder and then save all ripping files into the folder. After connecting TV(or Monitor), select VIDEO_TS.IFO file at the folder. Make sure that all the ripping files including VIDEO_TS.IFO from one DVD title will be located at one folder.

✓If you can not find VIDEO_TS.IFO file among all the ripping files from an original DVD title, DVD manager function will not work.



Select 'Video' icon in Media Type Selection screen.

Move to the folder including DVD ripping files and select 'video_ts.ifo' file and press [ENTER] button.



< Function and Button Descriptions >

| Remote Control | Function | Description |
|------------------|-----------------------|---|
| AUDIO | Select Audio Type | Audio type will be changed whenever pressing this button. |
| SUBTITLE | Select Subtitle Type | Subtitle type will be changed whenever pressing this button. |
| Scr. SIZE | Screen Size | Screen size will be changed when press the button. |
| MENU | Go to Menu | Move to main menu while playing DVD. |
| SLOW | Playback Slow | Play slowly 1/2x, 1/4x, and 1/8x whenever pressing this button. |
| REPEAT | Chapter, Title Repeat | Set chapter, title repeat. |

| | | |
|----------------------------|---|---|
| A-B REPEAT | A-B repeat | Set the A-B repeat. |
| TITLE | Go to Title Menu | Move to title menu while playing DVD. |
| ANGLE | Angle | Apply angle function. |
| FILE INFO | Show File Information | Show the file information which is being played. In order to hide the information, press this button again. |
| TIME SEARCH | Jump to Preferable Playback Time | Move to a selected time of a file. |
| CANCEL | Delete Input Numbers | In time search box, this button deletes all numbers in 0. |
| Br. CONT | Control luminosity, color depth, brightness | When pressing this button, 3 modes switch. After selecting a mode, change settings with ◀▶ arrow buttons. |
| PREV I◀◀ | Playback Previous Chapter | Play a previous chapter. |
| NEXT ▶▶I | Playback Next Chapter | Play a next chapter. |
| FF ▶▶ | Fast Forward | Whenever pressing this button, play speed is changed with 8x, 16x, 32x, 48x in forward. |
| REW ◀◀ | Rewind | Whenever pressing this button, play speed is changed with 8x, 16x, 32x, 48x in backward. |
| ENTER | Playback | Play 'Video_ts.ifo' file. |
| PLAY / PAUSE ▶II | Pause | Pause playback, if pressing this button when a file is being played. In order to play again, press this button again. |
| VOLUME + | Volume Up | Volume up. |
| VOLUME - | Volume Down | Volume down. |
| MUTE | Sound Off | Mute the sound. In order to hear sound, press this button again. |

2.6 Play Music Files

It is possible to play music files like MP3, OGG, WAV, WMA.

Select Audio icon in Media Type Selection screen. Music file list will be displayed. Just move to a file and press [ENTER] or [PLAY/PAUSE] button.



Select 'Audio' icon in Media Type Selection screen.

Move to a file and press [ENTER] or [PLAY/PAUSE] button. Press [ENTER] for playing just the file or [PLAY/PAUSE] for playing all files from the selected file.



< Function and Button Descriptions >

| Remote Control | Function | Description |
|----------------|---|---|
| FILE INFO | Show File Information | Show the file information which is being played. In order to hide the information, press this button again. |
| TIME SEARCH | Jump to Preferable Playback Time | Move to a selected time of a file. |
| CANCEL | Delete Input Numbers | In time search box, this button deletes all numbers in 0. |
| Brt. CONT | Control luminosity, color depth, brightness | When pressing this button, 3 modes switch. After selecting a mode, change settings with ◀▶ arrow buttons. |
| PREV I◀◀ | Playback Previous File | Play a previous file before a current playback file. If you used [ENTER] for playback, you can not use this function. This is available in playing all files as using [PLAY/PAUSE] button or 'Play All' icon. |

| | | |
|----------------------------|------------------------------|--|
| NEXT ▶▶I | Playback Next File | Play a next file after a current playback file. If you used [ENTER] for playback, you can not use this function. This is available in playing all files as using [PLAY/PAUSE] button or 'Play All' icon. |
| FF ▶▶ | Go to 10 Sec. in Forward | Go to 10 sec. in forward and play when a file is being played. |
| REW ◀◀ | Go to 10 Sec. in Backward | Go to 10 sec. in backward and play when a file is being played. |
| ENTER | Playback a File | Play a file. After finishing playback, return to file selections screen. |
| PLAY / PAUSE ▶II | Playback Next All Files | After the file that you select, play next all files continuously. It is same as [PLAY/PAUSE] button. |
| PLAY / PAUSE ▶II | Pause | Pause playback, if pressing this button when a file is being played. In order to play again, press this button again. |
| VOLUME + | Volume Up | Volume up. |
| VOLUME - | Volume Down | Volume down. |
| MUTE | Sound Off | Mute the sound. In order to hear sound, press this button again. |
| SUBTITLE | Hide Mp3 Subtitle | It is possible to show mp3 subtitle which the mp3 file supports subtitle. In that case, this button will hide the subtitle. * mp3 subtitle supported file must be made by iriver caption editor program, not support LDB program. |

✓How to Play MP3 without TV set. MP3 Quick Play

Make a 'music' folder (in a small letter not a capital letter) at root directory of built-in HDD and save MP3 files at the folder. If the HDD is divided into two or more partitions, make a 'music' folder at first partition.

Turn on Mpeg4 Player and just press [PLAY/PAUSE] button. MP3 files at 'music' folder will be played automatically. Additionally, after rebooting Mpeg4 Player, the last played file will be continued to play.

✓How to See MP3 Subtitle

It is possible to show MP3 subtitle which the MP3 file supports subtitle. MP3 subtitle supported file must be made by 'iriver caption editor' program, not support LDB program.

2.7 Play Photo Files

It is possible to play photo files like JPG(JPEG).

Select Photo icon in Media Type Selection screen. Photo file list will be displayed. Just move to a file and press [ENTER] or [PLAY/PAUSE] button.



Select Picture icon in Media Type Selection screen.



Move to a file and press [ENTER] or [PLAY/PAUSE] button. Press [ENTER] for playing just the file or [PLAY/PAUSE] for playing all files from the selected file.



< Function and Button Descriptions >

| Remote Control | Function | Description |
|----------------|------------------------|---|
| FILE INFO | Show File Information | Show the file information which is being played. In order to hide the information, press this button again. |
| PREV I ◀◀ | Playback Previous File | Play a previous file before a current playback file. If you used [ENTER] for playback, you can not use this function. This is available in playing all files as using [PLAY/PAUSE] button or 'Play All' icon. |
| NEXT ▶▶ I | Playback Next File | Play a next file after a current playback file. If you used [ENTER] for playback, you can not use this function. This is available in playing all files as using [PLAY/PAUSE] button or 'Play All' icon. |
| ENTER | Playback a File | Play a file. After finishing playback, return to file selections screen. |

| | | |
|--------------------------|--|---|
| PLAY / PAUSE ▶ | Playback Next All Files | After the file that you select, play next all files continuously. It is same as [PLAY/PAUSE] button. |
| PLAY / PAUSE ▶ | Pause | Pause playback, if pressing this button when a file is being played. In order to play again, press this button again. |
| FF ▶▶ | Zoom In | Enlarge a photo. |
| REW ◀◀ | Zoom Out | Reduce a photo. |
| ANGLE | Rotation | Rotate a photo. |
| 방향키 ▲▼◀▶ | Panning | Move the position of photo. |
| ENTER | Return to Original Photo | Return to original photo. |
| Brt. CONT | Control luminosity, color depth, brightness | When pressing this button, 3 modes switch. After selecting a mode, change settings with ▲▼ arrow buttons. |

✓ **Photo Slide Show**

If you play all files with 'Play All' icon or [PLAY/PAUSE], photo slide shows will be started.

✓ **Music Slide Show**

Make a 'music' folder (in a small letter not a capital letter at root directory) of built-in HDD and save MP3 files at the folder. If the HDD is divided into two or more partitions, make a 'music' folder at first partition.

When you play one or all photo files, you can listen mp3 and see photo slide show together.

✓ **Photo Preview On, Off**

It is possible to enable or disable preview the photo file as a thumbnail image before playing at Other Setup screen.

2.8 Make a Play-List

User can register all media type of files like video, music, and photo to play-list. The registered media files to play-list will be played without discriminating media type.

✓ It is not possible to play each registered files independently. Use 'Play All, Random Play' icon or [PLAY/PAUSE] button. Additionally, registered play-list will be deleted after rebooting.



① Select Play List icon in Media Type Selection screen.

② Move to a file and press [ENTER] for adding to Play-List. After adding, press ◀ for moving to Left Icon. Move to 'Display' icon and press [ENTER].



③ Play-List screen appears. You can see just added files. Play as followings,

- Play All icon: play in order from selected file.
- Random Play icon: play in random.
- Play/Pause button: play in order from selected file.

* In order to move up to Left Icon, press [◀] button.

* Delete All icon means to delete all the added files.

* In order to delete a added file, move to a file on Play-List screen and press [ENTER] twice.

* In order to change location among added files, move to a file which you want to move and press [ENTER] and then move to the other file where you want to add and press [ENTER].

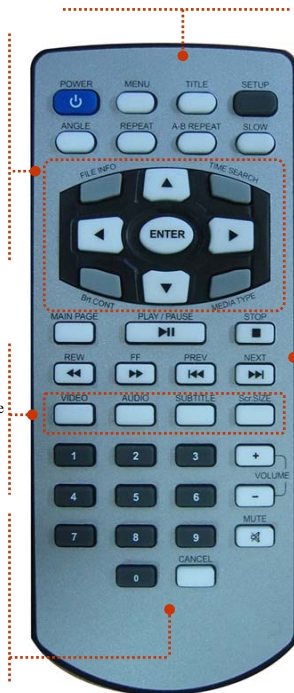
2.9 Remote Controls

This is guide for basic use of remote control. For more details, '2.3 Basic Screen Menu', '2.4 Play Video Files', '2.5 Play DVD Files', '2.6 Play Music Files', '2.7 Play Photo Files', '2.8 Make a Play-List'.

| | | | |
|---------------|-------------------------------|-------------------|---------------------------|
| POWER | Turn On / Off | SETUP | Go to Setup Screen. |
| MENU | Go to DVD Main Menu | | |
| TITLE | Go to DVD Title Menu | ANGLE | DVD Angle, Photo Rotation |
| REPEAT | Set DVD Chapter, Title Repeat | A-B REPEAT | Set DVD A-B Repeat |
| SLOW | Play DVD Slowly | | |

| | |
|--------------------|---|
| ENTER | Play a File |
| ▲▼▶◀ | Arrow Key |
| FILE INFO | Show File Info |
| TIME SEARCH | Jump to Specific play time |
| Brt. CONT | Set Luminosity, Color Depth, Brightness |
| MEDIA TYPE | Go to Media Type Selection Screen |

| | |
|------------------|--------------------------------------|
| VIDEO | Change Video Output Mode |
| AUDIO | Change Audio Type of Video, DVD file |
| SUBTITLE | Subtitle Settings |
| Scr. SIZE | Screen Size Settings |



| | |
|-------------------|---|
| MAIN PAGE | Go to Media Type Selection Screen. |
| PLAY/PAUSE | Play next all files Pause |
| STOP | Stop Play |
| REW | Play Faster in Backward |
| FF | Play Faster in Forward |
| PREV | Go to Previous Page Play Previous File in Play All |
| NEXT | Go to Next Page Play Next File in Play All |

How to Insert/Change Battery

- ① Pull off the battery tray for remote controller's body completely.
- ② Put the enclosed battery on the tray.
- ③ Insert the tray into remote controller's body completely.



2.10 Others

2.10.1 Music Slide Show

Make a 'music' folder (in a small letter not a capital letter) at root directory of built-in HDD and save MP3 files at the folder. If the HDD is divided into two or more partitions, make a 'music' folder at first partition.

When you play one or all photo files, you can listen mp3 and see photo slide show together.

2.10.2 MP3 Quick Play

This is for listening MP3 files without TV set.

Make a 'music' folder (in a small letter not a capital letter) at root directory of built-in HDD and save MP3 files at the folder. If the HDD is divided into two or more partitions, make a 'music' folder at first partition.

Turn on Mpeg4 Player and just press [PLAY/PAUSE] button. MP3 files at 'music' folder will be played automatically.

Additionally, after rebooting Mpeg4 Player, the last played file will be continued to play.

2.10.3 Change Background Image

It is possible to change a background image on Mpeg4 Player. Save 'mybg.jpg' at root directory of built-in HDD.

Background image will be changed as 'mybg.jpg'.

* Recommend to use 720x480 pixels image.

2.10.4 Change OSD Text Color

Press number 1 button before playing a file, OSD text color will be changed in dark or white. When you change background image in dark or white, this function will allow to read the text easily.

2.10.5 Firmware Upgrade

Download a upgrade file from local distributor in your country or visit at www.airlinktek.com

After connecting TV set, move to the upgrade file and press [ENTER]. Upgrade is progressed automatically.

After finishing upgrade, you can check firmware version on Setup screen. Press [SETUP] button.

Technical Support

Contact your local distributor in your country or

AL Tech, Inc. in Korea www.airlinktek.com, Tel 82-2-3011-9219, Fax 82-2-566-6186, E-mail sales@airlinktek.com

Free Manuals Download Website

<http://myh66.com>

<http://usermanuals.us>

<http://www.somanuals.com>

<http://www.4manuals.cc>

<http://www.manual-lib.com>

<http://www.404manual.com>

<http://www.luxmanual.com>

<http://aubethermostatmanual.com>

Golf course search by state

<http://golfingnear.com>

Email search by domain

<http://emailbydomain.com>

Auto manuals search

<http://auto.somanuals.com>

TV manuals search

<http://tv.somanuals.com>