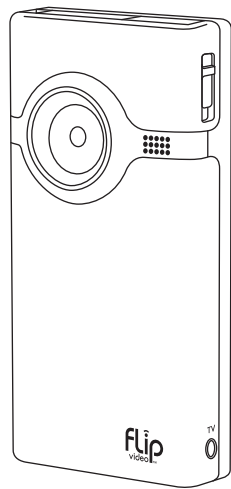


flip  
video™



mino

QUICKSTART GUIDE

Get Started

Welcome to Flip Video Mino™

1 Press power button to turn on. Camcorder setup appears automatically when you first power on.



Setting Date

- Use + and - to adjust the current setting.
- Use < and > to select month/day/year.

Setting Time

- Use + and - to adjust the current setting.
- Use < and > to select hour/minute/AM/PM.

Turning Off Tones

- Use < and > to toggle the tones on and off.

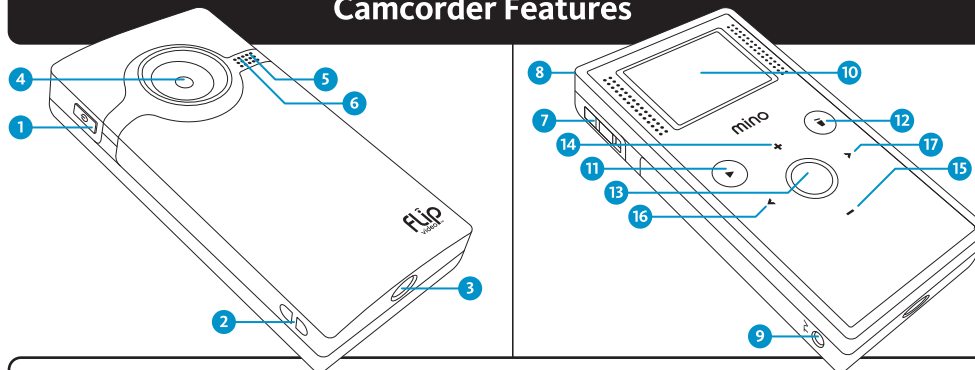
To Return to Camcorder Setup Later

Starting with the camcorder OFF:

- 1 Press power button to turn on.
- 2 When Flip Video logo appears, press and hold record button until SET DATE appears.

Note: Camcorder is shipped with a partially charged battery.

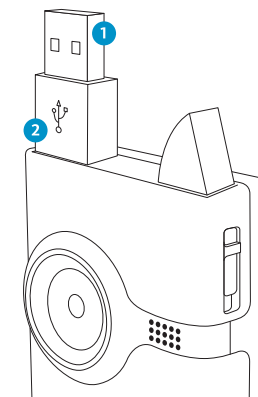
Camcorder Features



1	Power Button	Press to turn on/off.
2	Wrist Strap Hook	Attach wrist strap, included in package.
3	Tripod Mount	Attach a tripod or other Flip Video accessory. Learn more at <a href="http://www.theflip.com/accessories">www.theflip.com/accessories</a> .
4	Lens	Wipe clean with a soft, dry cloth.
5	Recording Light	Red light turns on during recording.
6	Microphone	Built-in wide-range microphone.
7	USB Latch	Slide down to release USB arm.
8	USB Arm	If space does not permit proper connection, use a USB "A"-type extension cable.
9	TV Output Port	Connect TV cable, included in package.
10	Screen	Recording viewfinder/playback screen.
11	Play Button	▶ Touch to play/pause. Touch and hold to play all.
12	Delete Button	⏏ Touch to delete. Touch and hold to lock/unlock the delete button.
13	Record Button	● Press and release to start/stop recording.
14	Up Button	+ <b>While Recording:</b> Touch to zoom in. <b>During Playback:</b> Touch to increase volume.
15	Down Button	- <b>While Recording:</b> Touch to zoom out. <b>During Playback:</b> Touch to decrease volume.
16	Left Button	< <b>While Paused:</b> Touch to skip to previous video. <b>During Playback:</b> Touch and hold to rewind.
17	Right Button	> <b>While Paused:</b> Touch to skip to next video. <b>During Playback:</b> Touch and hold to fast-forward.

Recharge Battery

- 1 Connect USB arm to computer's USB port.
- 2 Blinking light indicates charging. The light stops blinking when charged.



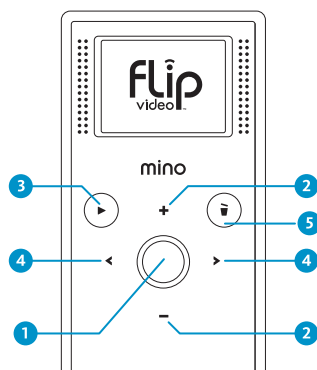
- Mino uses a sealed, rechargeable battery.
- Recharging a discharged battery takes about 3 hours.
- The camcorder may remain connected to your computer after it is fully charged, but disconnecting it will help preserve the battery's lifespan and performance.
- The optional Flip Video Power Adapter can charge the battery in about 2 hours.

Note: Your computer must be powered on for Mino to charge.

Record and Play

Touch-Sensitive Buttons

Gently touch lighted icons with your finger to activate the controls on the back panel.



Recording Videos

- 1 Press record button to start/stop. ●
- 2 Touch up/down buttons to zoom in/out. + -

Playing Videos

- 3 Touch play button to start/pause. ▶
- 4 Touch left/right buttons to view previous/next. <>

Tip: Hold left/right during playback to rewind/fast-forward.

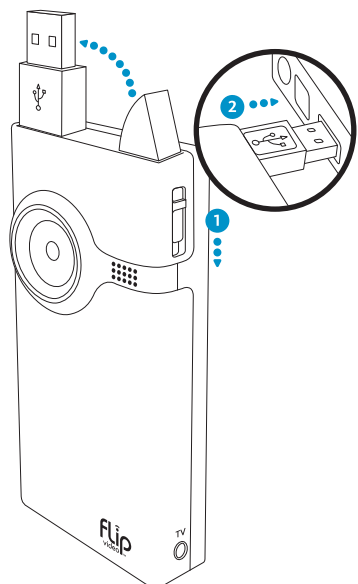
Deleting Videos

- 5 Touch delete button. ⏏ Select "Yes" to confirm.

Tip: Delete button is locked when you first power on. To unlock, press and hold delete button.

Connect to Computer

- 1 Slide USB latch down. USB arm flips up automatically.
- 2 Plug arm into USB port on computer.
- 3 Your camcorder will begin recharging and you can install FlipShare software on your computer.



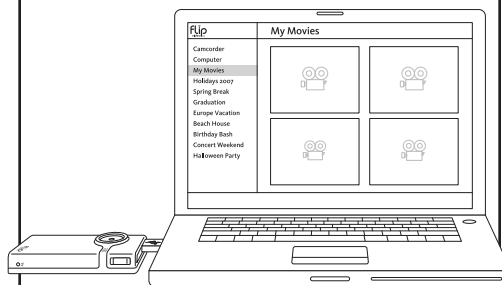
Save, Edit, and Share

Flipshare™

FlipShare is built-in software that makes organizing, editing, and sharing video incredibly simple. When you plug in your camcorder, open FLIPVIDEO and launch Setup FlipShare (PC) or Start Flipshare (Mac)

FlipShare Features

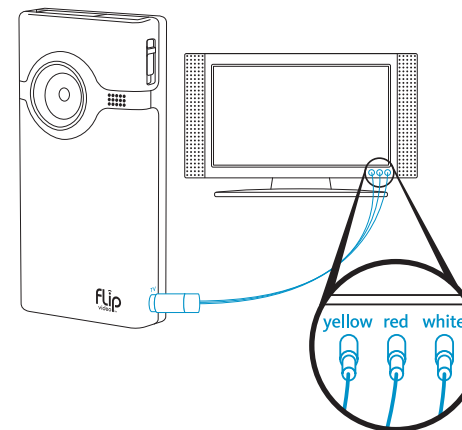
- Browse, play, and delete your videos
- Save your videos to your computer
- Make custom movies with music
- Snap photos from your videos
- Share your videos online or by email
- Upload to MySpace, YouTube, and others



Click "Help" inside FlipShare for detailed instructions on all features.

View On Television

- 1 Power off camcorder and television.
- 2 Connect camcorder to television with included TV connection cable.



- 3 Power on camcorder and television.
  - Camcorder screen turns off when connected to television.
- 4 Switch your television to VIDEO input.
  - See television manual for instructions.
- 5 Touch play button to start/pause playback. ▶

Included In This Box

- Flip Mino Camcorder
- Soft Case
- TV Cable
- Quickstart Guide
- Wrist Strap
- Warranty/Safety Info

Flip Video Support

Registration and Support

Go to [www.theflip.com/support](http://www.theflip.com/support)

Declaration of Conformity

Responsible Party:  
Pure Digital Technologies Inc.,  
30 Maiden Lane, 6th Floor  
San Francisco, CA 94108



FCC COMPLIANCE STATEMENT

This device complies with part 15 of the FCC Rules. Operation is subject to the following two conditions: (1) This device may not cause harmful interference, and (2) this device must accept any interference received, including interference that may cause undesired operation.

RADIO AND TV INTERFERENCE

This equipment has been tested and found to comply with the limits for a Class B digital device in accordance with the specifications in Part 15 of FCC rules. These specifications are designed to provide reasonable protection against harmful interference in a residential installation. This equipment generates, uses, and can radiate radio frequency energy and, if not installed and used in accordance with the manufacturer's instructions, may cause harmful interference to radio communications.

However, there is no guarantee that interference will not occur in a particular installation. If this equipment does cause harmful interference to radio or television reception, which can be determined by turning the equipment off and on, the user is encouraged to try to correct the interference by one or more of the following measures:

- Reorient or relocate the receiving antenna.
- Increase the separation between the equipment and the receiver.
- Connect the equipment into an outlet on a circuit different from that to which the receiver is connected.
- Consult the dealer or an experienced radio/television technician for help.

The supplied interface cable must be used with the equipment in order to comply with the limits for a digital device pursuant to Subpart B of Part 15 of FCC Rules.

CAUTION: Changes or modifications to this device not authorized by Pure Digital Technologies, Inc. may void the user's authority to operate this device.

## Free Manuals Download Website

<http://myh66.com>

<http://usermanuals.us>

<http://www.somanuals.com>

<http://www.4manuals.cc>

<http://www.manual-lib.com>

<http://www.404manual.com>

<http://www.luxmanual.com>

<http://aubethermostatmanual.com>

Golf course search by state

<http://golfingnear.com>

Email search by domain

<http://emailbydomain.com>

Auto manuals search

<http://auto.somanuals.com>

TV manuals search

<http://tv.somanuals.com>