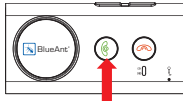


# SUPERTOOTH 3

BLUETOOTH HANDSFREE

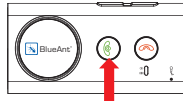
## Quick Start Guide

### 1 First Time Turn ON and Pairing



Press the **green button** until the LED will blinks **red/blue**.

### 2



Confirm language selection by pressing the **green button** as soon as your language is spoken on the **SUPERTOOTH 3**.

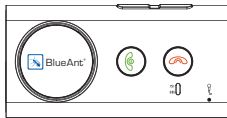
### 3

The **SUPERTOOTH 3** will then ask you to pair your phone.



On your phone bluetooth menu, search for devices and select **BlueAnt ST3** then enter **0000** as pincode.

### 4A

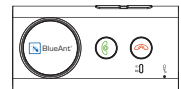


Phonebook transfer will be initiated. Accept any connection request on your phone if prompted. Then wait until **SUPERTOOTH 3** says: **"BlueAnt ST3 ready, connected to phone."**

### 4B

In case your phone doesn't support automatic transfer (don't press the **red key** of your **SUPERTOOTH 3**), go to your phones **"Contact Menu"**, then select:

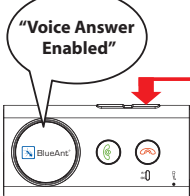
- 1) OPTION
- 2) Mark all } *if available*
- 3) Option } *if available*
- 4) Send or Send Business card
- 5) Via Bluetooth
- 6) Select BlueAnt ST3



**Note:** Blackberry and Smart phone owners please refer to section F of user guide.

### 5A

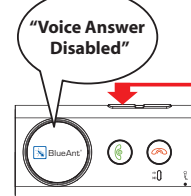
#### Activation of Voice Answer:



Press **VOL +** for 5 seconds until the **SUPERTOOTH 3** confirms this mode.

### 5B

#### Deactivation of Voice Answer:



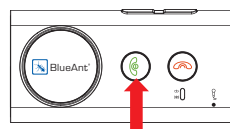
Press **VOL -** for 5 seconds until the **SUPERTOOTH 3** confirms this mode.

**NOTE:** Voice activation or deactivation is possible only if you're not on call.

### 6

#### Manual Answer

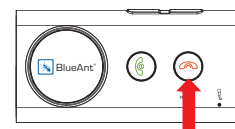
Press the **green button** to answer incoming call.



### 7

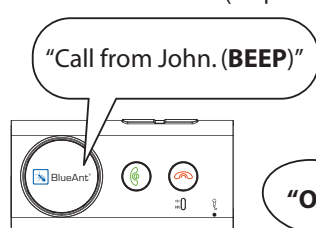
#### End / Reject Call

Press the **red button** to end or reject a call.



### 8

#### Voice Answer (if option is activated)



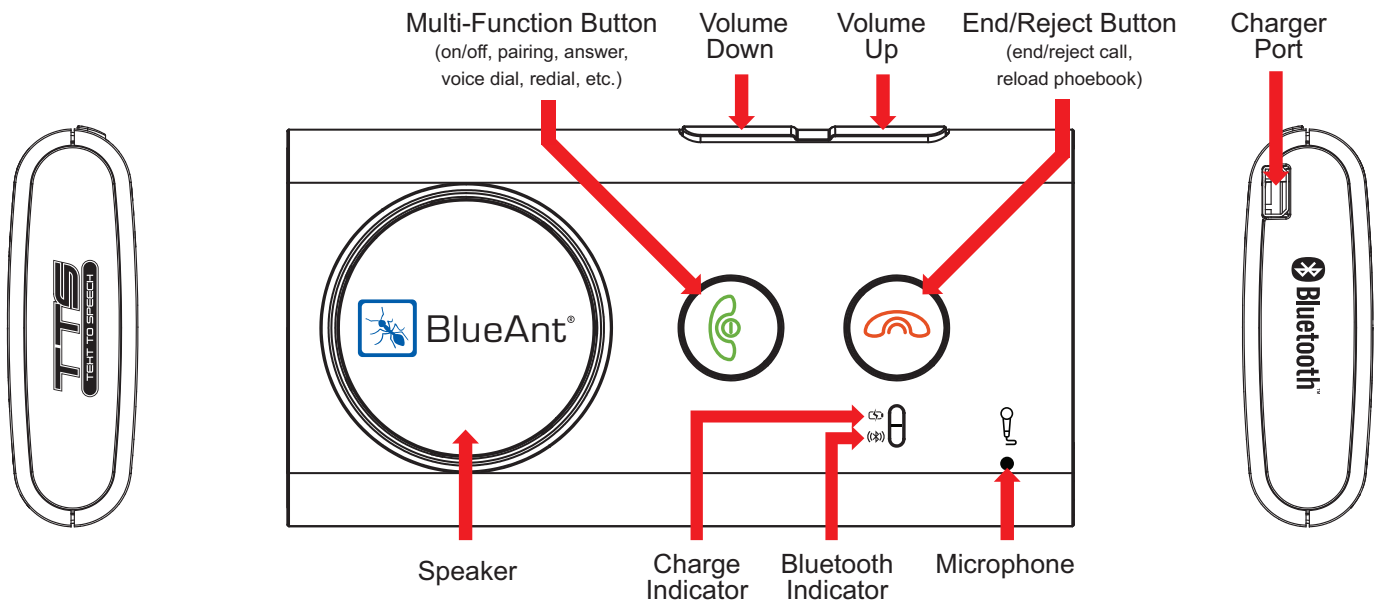
**After the BEEP**, say clearly one of the words below:

- "ACCEPT CALL"
- "ACCEPT"
- "ANSWER"
- "OK"

**IMPORTANT:** Voice answer will not work if you don't wait for the BEEP.



BlueAnt®



## Installation

Fix the metal clip of the SUPERTOOTH 3 to the sun-visor

Attach the magnetic back of the SUPERTOOTH 3 to the fixed metal clip

The SUPERTOOTH 3 must be placed in such a way that its microphone is directed to the mouth of the user.

## Other Functions

### Turn ON

Press the **green button** for 1 second to turn ON.

### Turn OFF

Press **green button** until "SUPERTOOTH VOICE Powering Down" is announced.

### Increase Volume

Press repeatedly **VOL +** to increase volume.

### Decrease Volume

Press repeatedly **VOL -** to decrease volume.



## Free Manuals Download Website

<http://myh66.com>

<http://usermanuals.us>

<http://www.somanuals.com>

<http://www.4manuals.cc>

<http://www.manual-lib.com>

<http://www.404manual.com>

<http://www.luxmanual.com>

<http://aubethermostatmanual.com>

Golf course search by state

<http://golfingnear.com>

Email search by domain

<http://emailbydomain.com>

Auto manuals search

<http://auto.somanuals.com>

TV manuals search

<http://tv.somanuals.com>