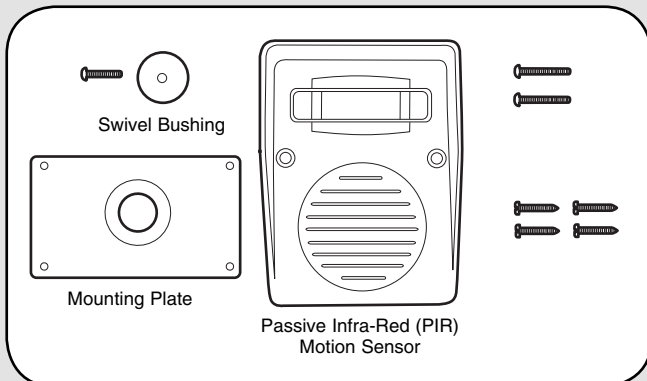


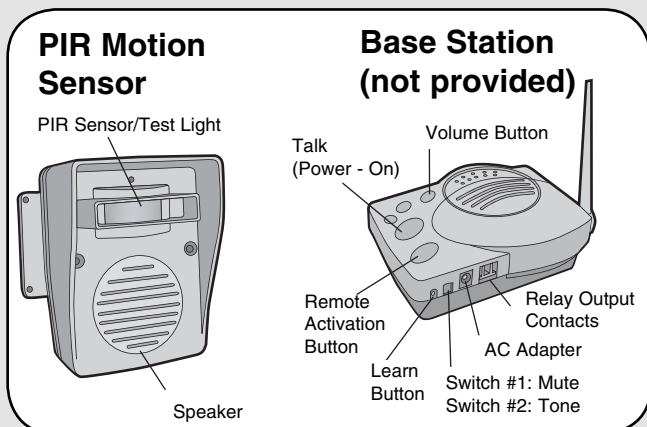
### Overview

The PIR Motion Sensor only works with Chamberlain's Wireless Pedestrian & Vehicle Alert with Voice (Model RWV400R) and Office Alert (Model CWV1000). The PIR Motion Sensor can be used to monitor motion up to 30' away and can transmit a signal up to 1000' away from the Base Station (not included). The Passive Infra-Red sensor detects movement of people and vehicles, while allowing small animals to pass through undetected. The PIR Motion Sensor has a built-in microphone and speaker that allows for communication between the Base Station and the Sensor. When the PIR Motion Sensor detects movement a signal is sent to the base station which alerts the homeowner with sounds and lights. The Alert can also remotely control a low voltage electrical device near the PIR Motion Sensor like a light or a camera (See Advanced Features).

### Carton Inventory



### Operation & Features



**On/Off:** To turn Base Station OFF hold down the Volume button until a beep is heard and light goes out. To turn Base Station ON press the Talk button.

### ⚠ WARNING

To prevent possible **SERIOUS INJURY** or **DEATH** from electrocution, outputs are suitable **ONLY** for controlling low voltage devices, 24V max, ac or dc.

**Intercom Feature:** When PIR Motion Sensor has detected motion, the Base Station will allow you to listen through the PIR Motion Sensor for 10 seconds. If you wish to talk to the person on the other end, hold down the Talk button and speak, releasing it to hear.

**Volume:** Pressing the Volume button repeatedly will cycle through volume levels.

**Mute:** To temporarily mute Base Station, hold the Volume and Talk buttons down for three seconds. The Base Station will reactivate after one hour, or by pressing the Talk button.

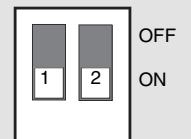
**Remote Button:** If there is an accessory device connected to the relay on the PIR Motion Sensor, it can be activated by pressing the Remote button within 30 seconds of the signal from the alert buzzer.

#### Switch #1:

OFF	Buzzer Off
ON	Buzzer On (Default)

#### Switch #2:

OFF	Long Buzz
ON	Short Buzz (Default)



**Battery:** The AA Alkaline batteries (not provided) will last up to 2 years depending on use (Lithium batteries recommended for colder environments). If PIR Motion Sensor batteries are low Base Station will emit three high-pitch beeps every ten minutes. If Base Station batteries are low it will emit two high-pitch beeps.

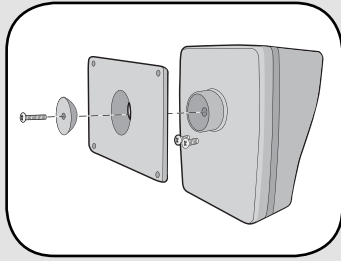
**Clear Memory:** Press and hold the Learn button on the Base Station until 3 beeps are heard. If the PIR Motion Sensor signals while Learn button is pressed, repeat the procedure.

#### Programming Additional PIR Motion Sensors:

Each Base Station can learn the code of up to 8 PIR Motion Sensors, responding with multiple buzzes. To program additional PIR Motion Sensors see Step 6.

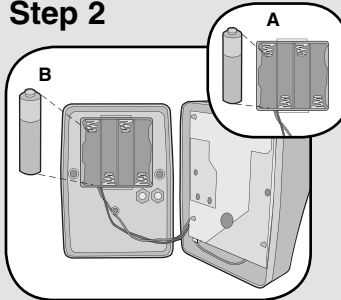
## PIR Motion Sensor Assembly & Test

### Step 1



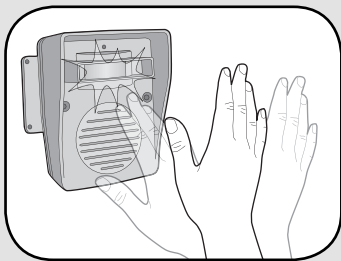
Connect the PIR Motion Sensor box to mounting plate with silver screw. Tighten screw until PIR Motion Sensor stays in place when repositioned.

### Step 2



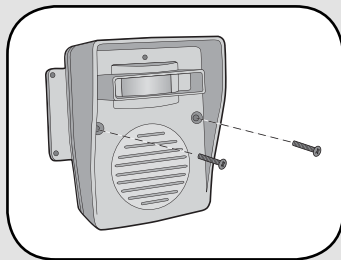
**A** Install 4 AA Alkaline batteries (not provided). (Lithium batteries recommended for colder environments.)  
**B** Ensure batteries do not touch circuit board.

### Step 3



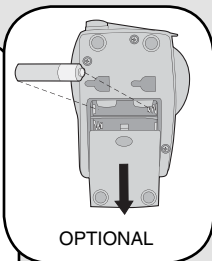
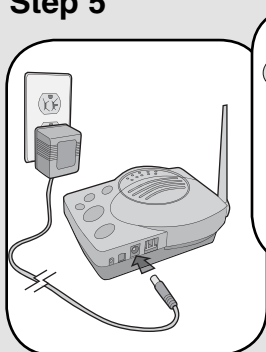
Test the PIR Motion Sensor by waving hand in front of sensor. Test light should flash after several seconds.

### Step 4



Secure cover with the two large black screws.

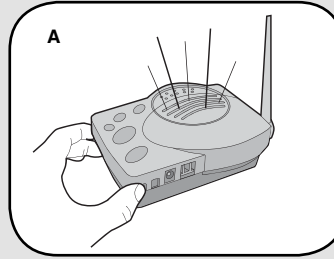
### Step 5



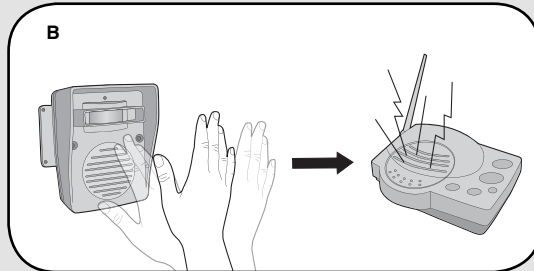
Ensure Base Station (not provided) has power.

## Programming PIR Motion Sensor to Base Station

### Step 6



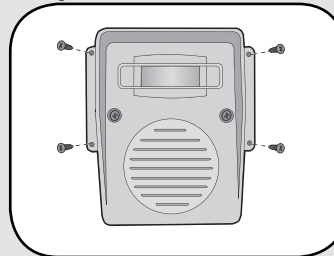
**A** Ensure that Base Station and PIR Motion Sensor are in close proximity to each other. Press and release learn button on Base Station. Buzzer will sound.



**B** Within 5 seconds, wave hand in front of PIR Motion Sensor. Test light will illuminate and Base Station will activate with static and feedback after several seconds.

## PIR Motion Sensor Installation

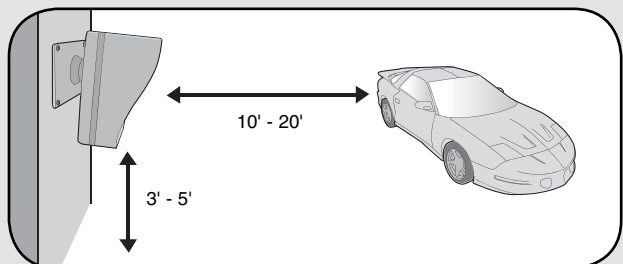
### Step 7



Mount PIR Motion Sensor vertically on solid surface a few feet off the ground and within 1000' of Base Station. Unit should be able to swivel as needed.

**NOTE:** Do not mount PIR Motion Sensor in direct sunlight, near moving tree branches, or in the path of a sprinkler system.

**Vehicle Alert Installation:** For cars, the best mounting position is about 4' high, between 10-20' back, and angled to see the back of car after passing the sensor.

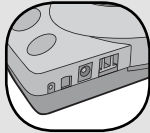


## Advanced Features

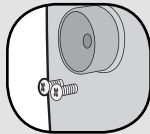
Both the PIR Motion Sensor and Base Station have relays which can activate other electrical devices. The accessory device will need a separate power supply.

**NOTE:** Output switching capacity is low voltage (24V max, ac or dc).

**Base Station:** The relays can be used to activate louder alarm bells, lights, cameras, or other accessories.



**PIR Motion Sensor:** The relays will only activate when the remote button is pressed on the Base Station. To prevent access to these relays flush mount the PIR Motion Sensor.



## Troubleshooting

### The Alert does not function.

Check batteries in PIR Motion Sensor. Ensure Base Station has power. Ensure PIR Motion Sensor is programmed to Base Station.

### The Alert is not getting expected transmission range.

Ensure Base Station antenna is vertical and keep PIR Motion Sensor away from trees and metal objects. Ensure Base Station is in clearest possible range of PIR Motion Sensor. The less objects between devices, the longer the range.

### Base Station is not very loud.

Adjust the volume of speaker. An accessory such as a low voltage bell, buzzer or light can be attached to the relay switch. The accessory device will need separate power supply.

**NOTE:** Output switching capacity is low voltage (24V max, ac or dc).

### Static and feedback is heard in Base Station.

PIR Motion Sensor is too close to the Base Station.

### The PIR Motion Sensor is detecting motion only part of the time.

To detect cars, it is best to mount PIR Motion Sensor at height of car's motor and have it between ten and twenty feet from the road. Swivel sensor as needed.

### The Alert is giving false alarms.

Check for moving tree branches or insects in sensor window. PIR sensor can also be triggered by light shining directly in sensor window, such as reflected sunlight, or motion in front of a light source.

### Base Station beeps every ten minutes.

If there are two beeps the battery is low in the Base Station. Replace with AA Alkaline batteries or operate it with AC Adapter. If there are three beeps the battery is low in the PIR Motion Sensor. Replace with AA Alkaline batteries.

**FOR TECHNICAL SUPPORT DIAL OUR TOLL FREE NUMBER:**

**1-800-528-9131**

**[www.chamberlain-DIY.com](http://www.chamberlain-DIY.com)**

NOTICE: To comply with FCC and or Industry Canada rules (IC), adjustment or modifications of this receiver and/or transmitter are prohibited, except for changing the code setting or replacing the battery. THERE ARE NO OTHER USER SERVICEABLE PARTS.

Tested to Comply with FCC Standards FOR HOME OR OFFICE USE. Operation is subject to the following two conditions: (1) this device may not cause harmful interference, and (2) this device must accept any interference received, including interference that may cause undesired operation.

## Free Manuals Download Website

<http://myh66.com>

<http://usermanuals.us>

<http://www.somanuals.com>

<http://www.4manuals.cc>

<http://www.manual-lib.com>

<http://www.404manual.com>

<http://www.luxmanual.com>

<http://aubethermostatmanual.com>

Golf course search by state

<http://golfingnear.com>

Email search by domain

<http://emailbydomain.com>

Auto manuals search

<http://auto.somanuals.com>

TV manuals search

<http://tv.somanuals.com>