



Digital Photo Keychain with 1.8" LCD



Instruction Manual

Please read this manual carefully before operation

Precautions

	CAUTION WARNING: SHOCK HAZARD. DO NOT OPEN. AVIS: RISQUE DE CHOC ELECTRIQUE. NE PAS OUVRIE	
CAUTION: TO REDUCE THE RISK OF FIRE AND ELECTRIC SHOCK, DO NOT REMOVE THE COVER (OR BACK) OF THE UNIT. REFER SERVICING ONLY TO QUALIFIED SERVICE PERSONNEL.		

For Customer Use:

Enter below the serial number that is located on the bottom of the unit. Retain this information for future reference.

Model No. _____ DP180 _____

Serial No. _____



The lightning flash with arrowhead symbol within an equilateral triangle is intended to alert the user to the presence of uninsulated “dangerous voltage” within the product’s enclosure that may be of sufficient magnitude to constitute a risk of electric shock.



The exclamation point within an equilateral triangle is intended to alert the user to the presence of important operation and servicing instructions in the literature accompanying the appliance.

WARNING:

To prevent fire or shock hazard, do not expose this device to rain or moisture. Dangerous high voltage is present inside the enclosure. Do not open the cabinet.



For recycling or disposal information about this product, please contact your local authorities or the Electronics Industries Alliance: www.eiae.org.

Table of Contents

Precautions	2
Table of Contents	3
Package Contents	3
Features & Specifications	3
Controls at a Glance.....	4
Display at a Glance.....	5
Charging and Powering the DP180	5
Getting Started	6
Photo Viewer Software for Windows	7
Photo Viewer Software for Macintosh.....	9
Main Menu Operations.....	11
Important Safety Instructions	12
Technical Support	13

Package Contents

Please make sure the following items are included in the product packaging. If any items are missing, contact your local dealer.

- DP180 Photo Keychain
- USB Cable
- Installation Manual

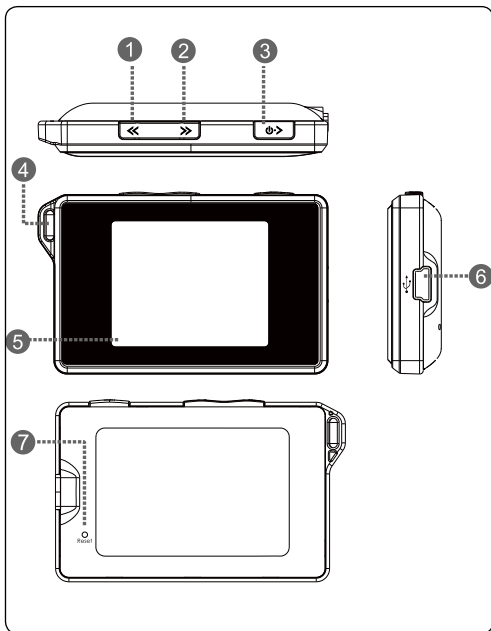
Features & Specifications

- Stores and displays up to 60 photos*
- Supports JPEG, BMP, and GIF photo files
- LCD color screen
- Photo slideshow and digital clock modes
- USB Port for file transfers and charging
- Integrated rechargeable battery



The maximum capacity may vary depending on the source photographs used.

Controls at a Glance



1	⏪	Previous
2	⏩	Next
3	▶/⏻	Play / Enter (Press once) Power On (Press and hold)
4		Key Chain Ring
5		LCD Display
6		USB Port: Connect the DP180 to a computer over USB to 1) charge the battery, and 2) transfer photos to the unit.
7		Reset Button

Display at a Glance



1	<p>Photo Indicator:</p> <p>The first number indicates the number of the current photo.</p> <p>The second number indicates the total number of photos loaded on the DP180.</p> <p>This indicator will automatically fade from the screen after a few seconds.</p>
2	<p>Clock Display Indicator:</p> <p>This indicator can be turned on or off in the Setup Menu (Clock Disp > Display Clock ON/OFF).</p>

Charging and Powering the DP180

The DP180 comes with an integrated rechargeable battery. Charge the battery by connecting it to the USB port of a powered-on computer.

To charge the DP180:

- Plug one end of the USB cable into the DP180's USB port and plug the other end into the USB port of a computer that is awake.
 - If the connection is made correctly, the display will read "USB Connected".
 - If the DP180 is connected to a USB hub, the hub must be self-powered to charge the battery.



The DP180 should be charged a minimum of four hours before initial use.

A new or exhausted battery should be charged fully before its initial use to ensure optimum lifetime performance.



Please observe the following when using this item: Do not disassemble, modify, crush, or puncture the unit in any way. Any excessive impact may cause the unit to malfunction.

Do not expose to high temperatures above 140°F (60°C).

Do not incinerate; dispose of properly.

Store between -4°F and 122°F (-20°C and 50°C).

Keep away from children.

Getting Started




To get started using the DP180:


Transfer your photos onto the DP180

1. Connect the DP180 to your computer using the supplied USB cable. The Photo Viewer Software will start automatically.
2. Transfer photos to the DP180 via the Photo Viewer Software.
3. Quit the Photo Viewer software and then disconnect the DP180 from your computer.

View your photos on the DP180

After you have loaded photos onto the unit:

1. Press and hold  to turn the unit on.
2. Press  or  to view the previous or next photo, respectively.

To turn on the DP180, press and hold  until the screen displays “COBY”.

To turn off the DP180:



- Press  to enter the Main Menu. “OFF” will be selected.
- Press  again to finish turning off the unit.

Photo Viewer Software for Windows

The included Photo Viewer software is required to transfer your digital photos to the DP180.

Refer to the instructions in this section if your computer is running the Microsoft Windows operating system.

Starting the Software

The Photo Viewer software will start automatically once you connect the DP180 to your computer. The software will allow you to view, delete, and download photos.

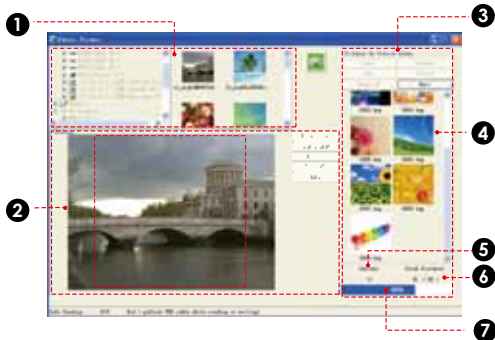


If the Photo Viewer software don't start automatically once you connect the DP180 to your computer, double-click the "Photo_Viewer" icon to start the software from the "My Computer" screen.



The Photo Viewer software requires a computer running Microsoft Windows 2000, XP, or Vista.

Software Window at a Glance



1. Browser Panel
2. Basic Operations Panel
3. Device Panel
4. Photos on the DP180
5. Number of the selected photo;
6. Device Capacity
 - The first number indicates how many photos are on the DP180.
 - The second number indicates the maximum number

of photos that can fit on the DP180.

6. Status Bar: Indicates which and when an operation is under way.

Preparing Photos for DP180 Display

Computer Functions

You can manually adjust the size, rotate and crop the photos in the “Basic Operations Panel” on the computer for DP180 display :

- Crop: Click and drag the dashed crop box to the desired location.
- Rotate: Click [**RotateL**] or [**RotateR**] to rotate the photo counter-clockwise or clockwise, respectively.
- Save: Click [**Add**] when you are finished to save the adjustments and add the photo to the “Device Panel”.



Photos are not transferred to the DP180 until you click the [**Download**] device function button.

Device Functions

Use the buttons in the “Device Panel” to transfer or delete photos from DP180.

- To transfer photos from the DP180 to your computer:

a) Select the photo on the DP180 to transfer, then; b) Click the [**Save**] button.

- Click [**Save All**] to save all photos from the DP180 to your computer directly.
- To delete photos on the DP180: a) Select the photos on the DP180 to delete, then; b) Click the [**Delete**] button.



To select all photos, click [**All**] in the Device Panel.

Synchronize (Transfer) Files to the DP180

After all adjustments have been made (computer or device functions), click the [**Download**] button to complete all of the operations.

- Quit the Photo Viewer software and then disconnect the DP180 from the computer.



To avoid damage to the DP180 or your photos, do not disconnect the DP180 from the computer while the synchronization process is underway.

Photo Viewer Software for Macintosh

The included Photo Viewer software is required to transfer your digital photos to the DP180.

Refer to the instructions in this section if your computer is running the Macintosh OS X operating system.

Installing and Start the Software

Install the Photo Viewer software on your computer to transfer photos to the DP180. The software will allow you to view, delete, and download photos.



The Photo Viewer software requires a computer running Mac OS X 10.3.9 or later.



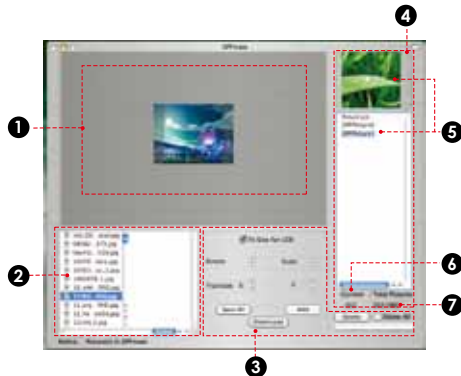
1. Connect the DP180 to your computer.
2. Open the "Photo_Viewer" folder and double click the "MacDPFmate.zip" file to install the program.



3. Double-click the "MacDPFmate" icon on the computer desktop to start the Photo Viewer software.



Photo Viewer Software at a Glance



1. Photo preview windows
2. Browser Panel
3. Basic Operations Panel
4. Device Panel
5. Photos on the DP180

6. Current number of photos on the DP180
7. Current quantity of photos on the DP180 / Total quantity of photos that the DP180 can store.

DP180 Photo Functions

You can transfer or delete photos from your DP180.

- To transfer all photos from the DP180 to your computer, click the "Save All" button [**Save All**].
- To delete photos on the DP180: a) Select the photos on the DP180 to delete, then; b) Click the "Delete" button [**Delete**].
 - Select "Delete All" beside the **Delete** button to delete all photos on the DP180.

Preparing Photos for DP180 Display

You may, however, manually adjust the size, rotate and crop the photos in the "Basic Operations Panel". Select a photo in the "Browser Panel" and then:

- **Crop:** Click and move the highlight crop box to the desired location. Or you can adjust the "X"(horizontal) and "Y"(upright) value in the "Translate" section to move the highlight crop.
- **Free-Size Crop:** Click UP or DOWN of the "Scale" button to enlarge or reduce the desired area.
- **Rotate:** Click UP or DOWN of the "Rotate" button

to rotate the photo clockwise or counter-clockwise, respectively.

- **Save:** Click "Add"[**Add**] when you are finished to save the adjustments and add the photo to the "Device Panel".

Synchronize (Transfer) Files to the DP180

Transfer the photos collected in the Device Panel to the DP180.

1. Click [**Download**] to start the transfer process.
2. When the transfer is complete, close the Photo Viewer software and then disconnect the DP180 from the computer.



To avoid damage to the DP180 or your photos, do not disconnect the DP180 from the computer while the synchronization process is underway.

Main Menu Operations

Press ***/0** to enter the Main Menu. You can adjust the unit's options from this menu.

- Press **◀** or **▶** to select an option.
- Press ***/0** to confirm a selection.

Menu Options

Menu Item	Function
Off	Power off the DP180.
Delete	Delete Photos from the DP180. <ul style="list-style-type: none">• Delete One: Delete the current photo;• Delete All: Delete all photos.• Cancel: Return to the Main Menu.
Display Mode	Set the Slideshow Mode to Auto or Manual. <ul style="list-style-type: none">• Auto Slide: The DP180 will automatically display photos one at a time. Upon selecting this option, you will be prompted to set the time interval between slides.• Manual Slide: Display photos manually (press ◀ or ▶ to view the previous or next photo, respectively).

Menu Item	Function
Clock Set	Set the date and time options. <ol style="list-style-type: none">1. Press */0 to select a Date or Time field to adjust. The selected field will flash.2. Press ◀ or ▶ to adjust the value of the selected field. Press */0 to finish and select the next field.
Auto ON/OFF	Set the internal time of Auto ON or OFF. The DP180 will power on or off automatically at the set time.
Clock Disp	Display the clock. <ul style="list-style-type: none">• Disp Time/Date: View the time and date.<ul style="list-style-type: none">• Press ◀ or ▶ to change the display between the analog or digital clock.• Press */0 to exit and return to the photo display.• Disp Clock ON/OFF: Toggle the time overlay on or off.
LCD Contrast	Adjust the contrast of the display.
Exit	Exit the Main Menu.

Important Safety Instructions

1. **Read Instructions:** All the safety and operating instructions should be read before the product is operated.
2. **Retain Instructions:** The safety and operating instructions should be retained for future reference.
3. **Heed Warnings:** All warnings on the product and in the operating instructions should be adhered to.
4. **Follow Instructions:** All operating and usage instructions should be followed.
5. **Cleaning:** Unplug this product from the wall outlet before cleaning. Do not use liquid cleaners or aerosol cleaners. Use a damp cloth for cleaning.
6. **Attachments:** Use only attachments recommended by the manufacturer. Use of other attachments may be hazardous.
7. **Water and Moisture:** Do not use this product near water (e.g., near a bath tub, washbowl, kitchen sink, laundry tub, in wet basements, or near a swimming pool and the like).
8. **Object and Liquid Entry:** Never push objects of any kind into this product, through openings or otherwise; this may result in objects touching dangerous voltage points or short-out parts that could result in a personal or property damage or injury, including fire or electric shock. Never spill liquid of any kind on the product.
9. **Heat:** The product should be situated away from heat sources such as radiators, heat registers, stoves, or other products (including amplifiers) that produce heat.
10. **Power Sources:** This product should be operated only from the type of power source indicated on the rating label. If you are not sure of the type of power supply to your home, consult your product dealer or local power company. For products intended to operate from battery power or other sources, refer to the operating instructions.
11. **Servicing:** Do not attempt to service this product yourself as opening or removing covers may expose you to dangerous voltage or other hazards. Refer all servicing to qualified service personnel.
12. **Damage Requiring Service:** a) if liquid has been spilled or if objects have fallen into the product; c) if the product has been exposed to rain or water; d) if the product does not operate normally by following the operating instructions. Adjust only those controls that are covered by the operating instructions as improper adjustment of other controls may result in damage and will often require extensive work by a qualified technician to restore the product to its normal operation; e) if the product has been dropped or damaged in any way; f) when the product exhibits a distinct change in performance—this indicates a need for service.
13. **Replacement Parts:** When replacement parts are required, be sure that your service technician has used replacement parts specified by the manufacturer or have the same characteristics as the original part. Unauthorized substitutions may result in fire, electric shock, or other hazards.
14. **Safety Check:** Upon completion of any service or repairs to this product, ask the service technician to perform safety checks to ensure that the product is in proper operating condition.

Technical Support

If you have a problem with this device, please check our website at www.cobyusa.com for Frequently Asked Questions (FAQs) and firmware updates. If these resources do not resolve the problem, please contact Coby Technical Support.

COBY Electronics Technical Support

56-65 Rust Street
Maspeth, NY 11378

Phone 800-727-3592: Weekdays 8:30AM–9:00PM EST

Saturdays 9:00 AM-5:30PM EST

718-416-3197: Weekdays 8:00AM–5:30PM EST

Email techsupport@cobyusa.com

Web www.cobyusa.com

Coby Electronics Corporation
1991 Marcus Avenue, Suite 301
Lake Success, NY 11042

www.cobyusa.com

Coby is a registered trademark of Coby Electronics Corporation.

Printed in China.

Download from Www.Somanuals.com. All Manuals Search And Download.

Free Manuals Download Website

<http://myh66.com>

<http://usermanuals.us>

<http://www.somanuals.com>

<http://www.4manuals.cc>

<http://www.manual-lib.com>

<http://www.404manual.com>

<http://www.luxmanual.com>

<http://aubethermostatmanual.com>

Golf course search by state

<http://golfingnear.com>

Email search by domain

<http://emailbydomain.com>

Auto manuals search

<http://auto.somanuals.com>

TV manuals search

<http://tv.somanuals.com>