



4GB MICRO HARD DISK MP3 PLAYER with VIDEO PLAYBACK



Instruction Manual

Please read this manual carefully before operation.

PRECAUTIONS

	CAUTION <i>RISK OF ELECTRIC SHOCK</i> <i>DO NOT OPEN</i>	
CAUTION: TO REDUCE THE RISK OF FIRE AND ELECTRIC SHOCK, DO NOT REMOVE THE COVER (OR BACK) OF THE UNIT. REFER SERVICING ONLY TO QUALIFIED SERVICE PERSONNEL.		

For Customer Use:

Enter below the serial number that is located on the bottom of the unit. Retain this information for future reference.

Model No. MP-C945

Serial No. _____



The lightning flash with arrowhead symbol within an equilateral triangle is intended to alert the user to the presence of uninsulated "dangerous voltage" within the product's enclosure that may be of sufficient magnitude to constitute a risk of electric shock.



The exclamation point within an equilateral triangle is intended to alert the user to the presence of important operation and servicing instructions in the literature accompanying the appliance.

WARNING:

To prevent fire or shock hazard, do not expose this device to rain or moisture. Dangerous high voltage is present inside the enclosure. Do not open the cabinet.

CAUTION:

To prevent electric shock, match wide blade of plug to wide slot of outlet and fully insert.

WARNING:

Handling the cords on this product will expose you to lead, a chemical known to the State of California to cause cancer, and birth defects or other reproductive harm. ***Wash hands after handling.***

NOTICE:

This product is protected by certain intellectual property rights of Microsoft. Use or distribution of such technology outside of this product is prohibited without a license from Microsoft.

Protect your hearing:

Hearing experts advise against the constant use of personal stereos played at high volume. Constant exposure to high volumes can lead to hearing loss. If you should experience ringing in the ears or hearing loss, discontinue use and seek medical advice.



For recycling or disposal information about this product, please contact your local authorities or the Electronics Industries Alliance: www.eiae.org.

PRECAUTIONS

Regulatory Information

This device complies with part 15 of FCC rules. Operation is subject to the following two conditions:

1. This device may not cause harmful interference, and
2. This device must accept any interference received, including interference that may cause undesired operation.

FCC Notice:

This equipment has been tested and found to comply with the limits for a Class B digital device, pursuant to part 15 of the FCC Rules. These limits are designed to provide reasonable protection against harmful interference in a residential installation. This equipment generates, uses, and can radiate radio frequency energy and, if not installed and used in accordance with the instructions, may cause harmful interference to radio communications. However, there is no guarantee that interference will not occur in a particular installation. If this equipment does cause harmful interference to radio and television reception, which can be determined by turning the equipment off and on, the user is encouraged to try to correct the interference by one or more of the following measures:

- Reorient or relocate the receiving antenna.
- Increase the separation between the equipment and receiver.
- Connect the equipment into an outlet on a circuit different from that to which the receiver is connected.
- Consult the dealer or an experienced radio/ TV technician for help.

If the product suddenly has no response or powers off, an electrostatic discharge may be the cause. In this circumstance, please follow the procedures below for recovery:

- Turn off the unit by pushing and holding the slide button at the right (Power off position) for 15 seconds.
- Turn on the unit again

IMPORTANT SAFETY INSTRUCTIONS

In addition to the careful attention devoted to quality standards in the manufacture of this device, safety is a major factor in the design of every instrument. However, safety is your responsibility, too. This sheet lists important information that will help to assure your enjoyment and proper use of this device and accessory equipment. Please read this carefully before operation and use of your device.

1. Read these instructions carefully. Keep these instructions for future reference.
2. Heed all warnings and follow all instructions.
3. Do not expose to water or moisture.
4. Clean only with a dry cloth.
5. This device should be operated only from the type of power source indicated on the rating label. If you are not sure of the type of power supply to your home, consult your video dealer or local power company. For devices intended to operate from battery power or other sources, refer to the operating instructions.
6. Do not overload wall outlets or extension cords as this can result in a risk of fire or electric shock. Overloaded AC outlets, extension cords, frayed power cords, damaged or cracked wire insulation, and broken plugs are dangerous. They may result in a shock or fire hazard. Examine the cord periodically, and if its appearance indicates damage or deteriorated insulation, have it replaced by a service technician.
7. Do not force the power plug into a wall outlet. If the plug provided does not fit into your outlet, consult an electrician for replacement of the obsolete outlet. (A polarized plug has two blades where one is wider than the other; the wide blade is provided for your safety.)
8. Do not place heavy objects on the power cord. Protect the cord from being walked on, pinched by objects, or torn and exposed to liquids (especially at plugs, convenience receptacles, and the point at which they exit from the device).
9. Do not use this device near water. Do not place objects filled with liquids (e.g., vases) on the device. Never spill liquid of any kind on the device.
10. Do not drop or otherwise subject the device to impact. Keep objects away from ventilation openings. Do not block ventilation openings at any time.
11. This device should be kept away from strong magnets (e.g., speaker systems are large CRT televisions).
12. Never push objects of any kind into this device through openings as they may touch dangerous voltage points or short out parts that could result in a fire or electric shock.
13. Do not install near any apparatus that produces heat such as stoves, radiators, amplifiers, etc.
14. Use only with attachments/accessories specified by the manufacturer. Use of attachments/accessories not recommended by the product manufacturer may be hazardous.
15. Unplug the device during lightning storms. Unplug the device and remove any batteries when the device will be unused for long periods of time.
16. Do not open or attempt to repair this device. Refer all repairs to authorized service personnel.
17. When replacements parts are required, be sure the service technician has used replacement parts specified by the manufacturer or that have the same characteristics as the original part. Unauthorized substitutions may result in fire, electric shock, or other hazards.
18. Upon completion of any service or repairs to this device, ask the service technician to perform safety checks to determine that the device is in proper operating condition.

FEATURES

- Integrated 4GB 1" Micro Hard Drive
- Touchpad control with LED backlight
- 1.5" advanced OLED color display
- Plays MP3, WMA, and WAV digital audio files
- Music library groups music files by album name, artist name, song title, genre, year and playlist
- Playlist support (WMP format)
- Quick Play gives you access to your most recently downloaded songs with a single click
- Voice recording through an integrated microphone
- Plays MPEG-4 videos
- View photos and slideshows while enjoying your music collection
- USB 2.0 high-speed transfers
- 20 hours of music playback

TABLE OF CONTENTS

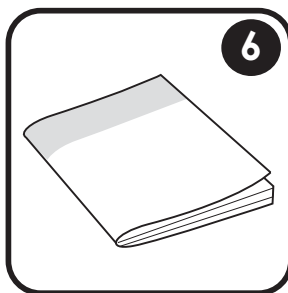
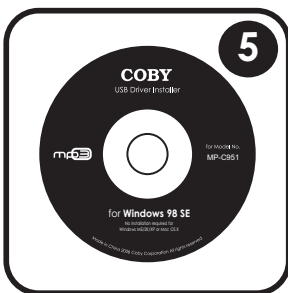
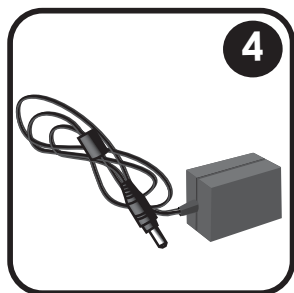
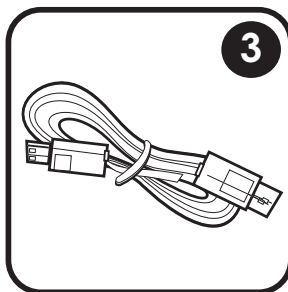
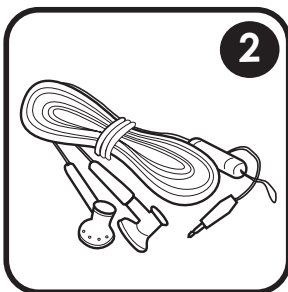
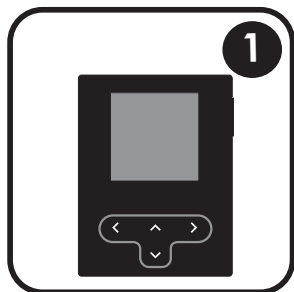
PRECAUTIONS.....	2
IMPORTANT SAFETY INSTRUCTIONS	4
FEATURES	5
TABLE OF CONTENTS.....	6
PACKAGE CONTENTS	8
POWERING YOUR PLAYER.....	9
Charging the Battery.....	9
Turning Your Player On/Off.....	9
Locking/Unlocking Your Player's Keys (Hold)	10
Resetting Your Player	10
LOCATION OF CONTROLS	11
Top View.....	11
Front View	11
Side View	11
DISPLAY OVERVIEW	12
BASIC OPERATIONS	13
Using the Touchpad Controls	13
Using the Controls to Navigate.....	13
Main Menu Overview	13
Smart Menu Options.....	14
Browsing/Playback	14
Volume	15
EQ (Equalizer).....	15
Repeat.....	15
Shuffle.....	16
Backlight	16
MUSIC MODE.....	17
Browsing Your Music Library	17
Play All	17
Playlists	17
Music Playback Controls	17
QUICK PLAY	18
Quick Play Controls	18
PHOTO MODE.....	19
Browsing Your Photo Library	19
Displaying Your Photos as a Slideshow	19
VIDEO MODE.....	20
Browsing Your Video Library	20

TABLE OF CONTENTS

RECORD MODE.....	21
Voice Recording.....	21
SETTING MODE.....	22
USB CONNECTIONS.....	23
Minimum PC Requirements.....	23
USB Mode Auto-Detection (MSC/MTP).....	23
USB Driver Installation (Required for Windows 98 SE Only).....	24
Connecting to a Computer.....	25
USB-MTP Mode.....	25
USB-MSC Mode.....	26
Transferring Files.....	26
USB-MTP Mode.....	27
USB-MSC Mode.....	27
Disconnecting from a Computer.....	28
USB-MTP Mode.....	28
USB-MSC Mode.....	28
Build Music Library (USB-MSC Mode Only).....	28
VIDEO CONVERSION.....	29
Installation.....	29
Converting Video.....	29
WINDOWS MEDIA PLAYER.....	31
Windows Media Player 9 (WMP9).....	31
Music File Transfers.....	31
Windows Media Player 10 (WMP10).....	32
Music File Transfers.....	32
Creating Playlists.....	33
Automatic Windows Media Playlist Synchronization.....	35
TROUBLESHOOTING.....	38
SPECIFICATIONS.....	40

PACKAGE CONTENTS

Please make sure that the items shown below are included in the package. Should an item be missing, please contact the local retailer from which you purchased this product.



1. COBY MP-C945 4GB MP3 Player
2. Professional Stereo Earphones
3. USB Cable
4. AC Adapter
5. Installation CD
6. Instruction Manual

POWERING YOUR PLAYER

Charging the Battery

Your player has an integrated rechargeable battery that will provide up to 20 hours of music play time.



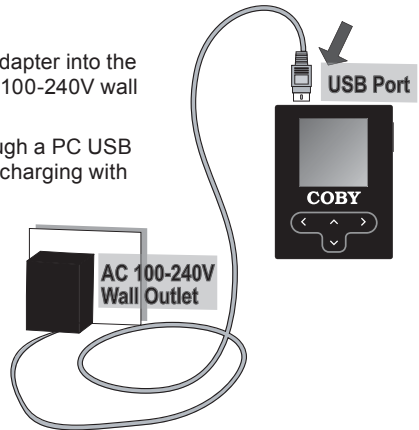
The battery should be charged fully (minimum 4 hours) before its initial use to ensure optimum lifetime performance.

To charge your player:

- **AC Charge:** Plug one end of the supplied AC Adapter into the player's USB port and plug the other end into a 100-240V wall outlet.
- **USB Charge:** Your player can be charged through a PC USB connection. USB charging will take longer than charging with the AC Adapter.

Plug one end of the USB cable into the player's USB port and plug the other end into the USB port of a powered-on computer.

- When connected to a USB hub, the hub must be self-powered to charge the player's battery.
- File transfers will extend the charging time.

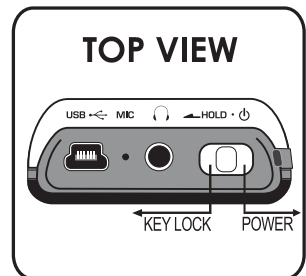


WARNING:

- The battery used in this device may present a fire or chemical burn if mistreated. Do not disassemble, incinerate, or heat the battery.
- Do not connect the power plug to a power outlet other than that which is indicated here or on the label as this may result in the risk of fire or electric shock.
- Do not handle the power plug with wet hands. Doing so may cause electric shock.
- Use only AC adapters of the type specified here. Failure to do so may cause a fire or damage the player.

Turning Your Player On/Off

- To turn the player on, slide and hold the Power/Key Lock switch to the right until you see the "Initializing" screen.
- To turn the player off, slide and hold the Power/Key Lock switch to the right until the player turns off.

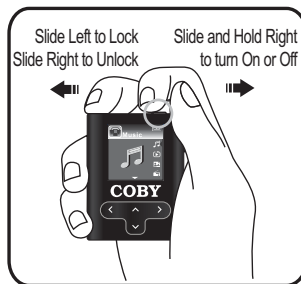


POWERING YOUR PLAYER

Locking/Unlocking Your Player's Keys (Hold)

When engaged, the Key Lock feature disables your player's controls to prevent accidental key presses when it is in your pocket or bag.

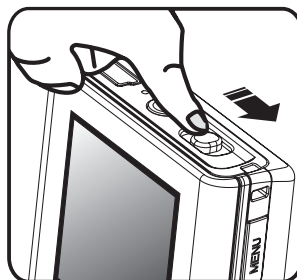
- To lock the player, slide the Power/Key Lock switch to the left (it will click into place). The Lock icon will appear on-screen.
- To unlock the player, slide the Power/Key Lock switch to the right to release it from the Lock position.



Resetting Your Player

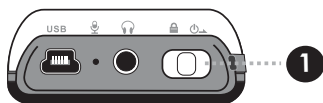
Reset your player if it should freeze and not respond or otherwise malfunction.

1. Disconnect your player if it is connected to a computer.
2. Connect your player to a 100-240V AC wall outlet with the AC Adapter to ensure that your player has power.
3. Slide and hold the Power/Key Lock switch to the right for 15 seconds. The touchpad keys will light up to indicate that the player has been reset.



LOCATION OF CONTROLS

TOP VIEW



Top View

- 1. Power / Key Lock Switch**
Power: Slide switch to the right
Key Lock: Slide switch to the left
Reset: Slide switch to the right and hold for 15 seconds

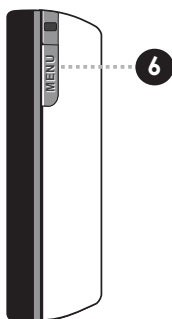
FRONT VIEW



Front View

- 2. Left Arrow**
Navigation Left
Reverse / Previous Track
Previous Page
Cancel
- 3. Down Arrow**
Navigation Down
Volume Adjustment (during playback)
- 4. Up Arrow**
Navigation Up
Play / Pause (during playback)
- 5. Right Arrow**
Navigation Right
Forward / Next Track
Confirm / Toggle Option

SIDE VIEW

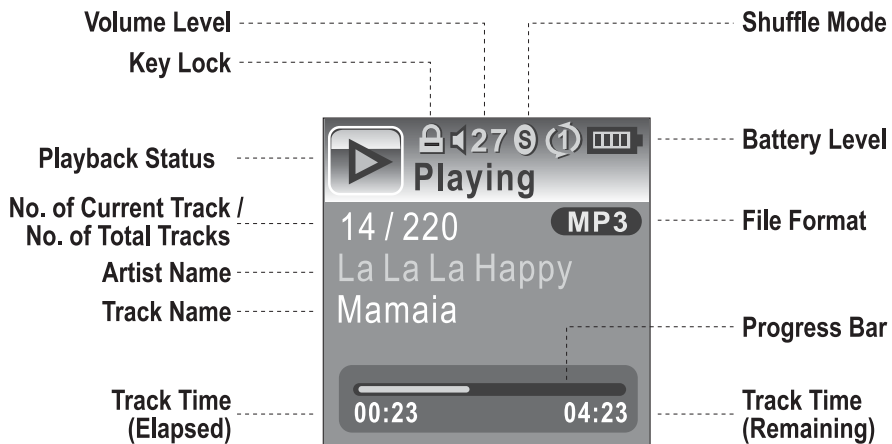


Side View

- 6. Menu Key**
Smart Menu: Press key once
Return to Main Menu: Press and hold key

To use the touchpad interface, press lightly on the backlit arrows to activate the control.

DISPLAY OVERVIEW



BASIC OPERATIONS

Using the Touchpad Controls

Your player comes equipped with a touch-sensitive control pad. To use the controls, touch the arrow keys on the front of the player lightly just as you would a button and the controls will light up. If you touch and hold a key, it will register as a continuous button press.

Using the Controls to Navigate

To navigate through the different menu options and files on your player:

- Touch the Arrow keys to move the selection in the direction of the arrow.
 - UP: Moves the selection up.
 - DOWN: Moves the selection down.
 - RIGHT: Enter a selection (i.e., confirm the selection)
 - LEFT: Go back to the previous screen (i.e., "Cancel").
- Press the MENU button to view the Smart Menu.
- Press and hold MENU to return to the Main Menu at any time.

Main Menu Overview

The Main Menu gives you access to the different function modes of your player. To access the Main Menu at any time, press and hold the MENU button.

- Press UP or DOWN to select a mode and then press RIGHT to Enter.



BASIC OPERATIONS

Playback Controls

Select a track and press RIGHT to start playback (see the Music Mode or Video Mode section for more information). While the track is playing:

- Press RIGHT to play the next track.
- Press LEFT to play the previous track.
- Press and hold RIGHT to fast forward through the track.
- Press and hold LEFT to reverse through the track.
- Press UP to pause playback. Press UP again to resume playback
- Press DOWN to display the Volume Bar.

Smart Menu Options

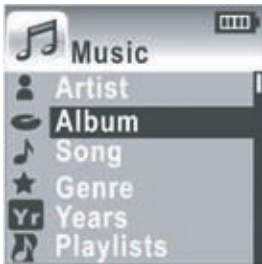
The Smart Menu gives you quick access to your player's option settings. To access the Smart Menu at any time, press the Menu button.

The Smart Menu options are Browsing/Playback, Volume, EQ, Repeat, Shuffle, and Backlight.

Browsing/Playback

This option allows you to browse your media library while a song is being played in the background. Whether this option appears as "Browsing" or "Playback" depends on what you were doing when you accessed the Smart Menu.

- From the "Playing" screen, select "Browsing" to browse your media library.
 - You can also press and hold MENU to return to the Main menu to enter another mode (e.g., you can enter Photo mode to view pictures while music is playing).
- To return to the "Playing" screen, select "Playback" from the Smart Menu.



Press
MENU

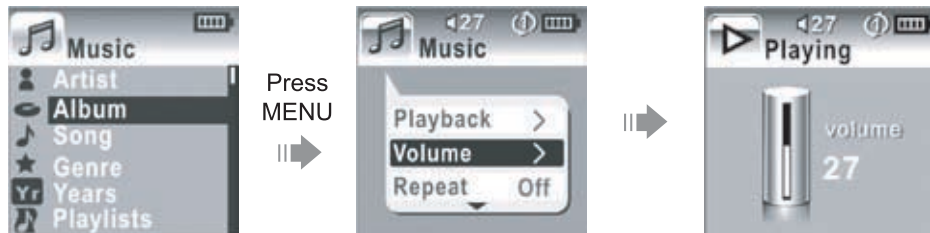


BASIC OPERATIONS

Volume

Display the Volume Bar to adjust the volume level.

1. Select Volume from the Smart Menu. The Volume Bar will appear on the screen.



2. While the Volume Bar is on-screen:
 - To raise the volume level, press UP.
 - To lower the volume level, press DOWN.
3. When you have finished adjusting the volume, press LEFT to return to the previous screen.



Set the volume to the lowest level before headphone use to avoid damage to your hearing or to your headphones.

EQ (Equalizer)

The Equalizer option optimizes the way your player processes audio signals. The Equalizer options are Normal, Rock, Jazz, Classic, Pop, and User. Select the option which best suits the music you are listening to.

To change the Equalizer options:

1. Highlight EQ in the Smart Menu.
2. Press RIGHT to change the Equalizer setting.

The User EQ setting can be customized in the “Setting” menu; please see the [Setting Mode](#) section for more information.

Repeat

The Repeat options can set your player to play tracks again.

To change the Repeat options

1. Highlight Repeat in the Smart Menu.
2. Press RIGHT to change the Repeat setting (Off, One, All).

BASIC OPERATIONS

Shuffle

The Shuffle options can set your player to play tracks in a random order.

To change the Shuffle options

1. Highlight Shuffle in the Smart Menu.
2. Press RIGHT to change the Shuffle setting (Off, On).

Backlight

The Backlight options sets the duration of time your player will keep the display backlight on after a key press. A smaller time setting allows the player to conserve more battery power.

To change the Backlight options

1. Highlight Backlight in the Smart Menu.
2. Press RIGHT to change the Backlight setting (10, 30, or 60 seconds).

MUSIC MODE

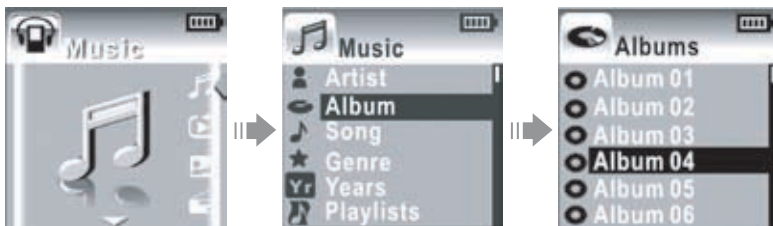
Enter Music mode to play your MP3, WMA, or WAV audio files.

To enter Music mode, select and confirm MUSIC in the Main menu.

Browsing Your Music Library

Upon entering Music mode, you will be able to browse your music library by the following categories: Artist, Album, Song, Genre, Year, and Playlist.

- Press the UP/DOWN keys to highlight a category and press RIGHT to enter.
- Within a category, highlight a track and press RIGHT to begin play.



To arrange your music in these categories, the MP-C945 reads information (metadata) stored in each of your music files. Many media management programs (e.g., Windows Media Player 10) can generate this information automatically from the internet. You can also enter information manually on your computer if necessary.



If a music file has no associated category information, it will be listed by its file name under the "Song" category.

Play All

The first item within a category is "Play All". "Play All" will play all tracks within the current category.

Playlists

Playlists are an easy way to organize and store your favorite music mixes so you can listen to them whenever you want.

- Playlists can be created with Windows Media Player (please see the [Windows Media Player](#) section for more information).
- After a playlist is synchronized with your player using Windows Media Player, it can be accessed by browsing the Playlist category.

Music Playback Controls

Please refer to "Playback Controls" in the [Basic Operations](#) section for instructions.

QUICK PLAY

Enter Quick Play mode to play your 20 most recently added MP3, WMA, or WAV audio files.

To enter Quick Play mode, select and confirm QUICK PLAY in the Main menu. Your player will immediately start playback.



Quick Play Controls

Quick Play controls are the same as in Music Mode. Please refer to [Music Mode](#) as well as “Playback Controls” in the [Basic Operations](#) section for instructions.

PHOTO MODE

Enter Photo mode to display your JPEG photo files.

To enter Photo mode, select and confirm PHOTO in the Main menu.

Browsing Your Photo Library

Upon entering Photo mode, you will see a list of all JPEG photos on your player.

- Press the UP/DOWN keys to highlight a photo and press RIGHT to display.
- While a photo is displayed:
 - Press DOWN to display the next photo in the list
 - Press UP to display the previous photo in the list
 - Press LEFT to return to the photo list.



Displaying Your Photos as a Slideshow

The first item in the photo list is "Slideshow". Selecting "Slideshow" will automatically display all your photos in sequence. Each photo will be displayed for 3 seconds before the next photo is displayed.

VIDEO MODE

Enter Video mode to play your XviD-encoded AVI video files.



The MP-C945 supports playback of XviD-encoded AVI files. Please see the [Video Conversion](#) section for details on how to create video files that are compatible with your player.

To enter Video mode, select and confirm VIDEO in the Main menu.

Browsing Your Video Library

Upon entering Video mode, you will see a list of all AVI videos on your player.



- Press the UP/DOWN keys to highlight a video and press RIGHT to play it.
- While a video is playing:
 - Press UP to pause playback. Press UP again to resume playback.
 - Press RIGHT to play the next track.
 - Press LEFT to play the previous track.
 - Press and hold RIGHT to fast forward through the track.
 - Press and hold LEFT to reverse through the track.
 - To return to the video list, pause playback and press LEFT.

RECORD MODE

Enter Record mode to make voice recordings through the integrated microphone located on the top of your player.

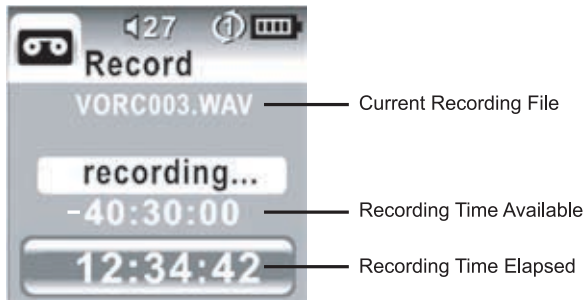
To enter Record mode, select and confirm RECORD in the Main menu.

Voice Recording

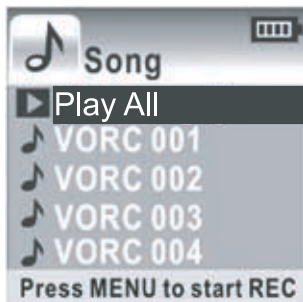
Upon entering RECORD mode, you will see a list of previously recorded files (if available).

- Press MENU to start recording through the microphone.
- Press MENU again to stop and save the recording.

The recorded file will be named "VORCXXX.WAV" where XXX corresponds to the numerical sequence in which the recording was made (numbering starts from 001.)



You can play your recorded files using the same controls as you would in Music mode.



SETTING MODE

Enter the Setting mode to set your player's system options.

To enter Setting mode, select and confirm SETTING in the Main menu.

Press UP/DOWN to select a setting and press RIGHT to change the setting option.

The Setting Mode options are:

1. **Brightness**
Controls the brightness of the display (this option can also be set from the Smart Menu)
2. **EQ**
Sets the equalizer preset
 - When the "User" option is selected, press MENU to enter a custom preset
 - Press RIGHT to change the active equalizer band (the active band will turn red).
 - Press UP/DOWN to raise or lower the level of the active equalizer band.
 - Press LEFT to return to the previous screen.
3. **Repeat**
Sets the Repeat mode (this option can also be set from the Smart Menu)
4. **Shuffle**
Sets the Shuffle mode (this option can also be set from the Smart Menu)
5. **Backlight**
Sets the duration of time (in seconds) that the LCD backlight remains on after a key-press (this option can also be set from the Start Menu)
6. **Free Capacity**
Displays the used and total amount of memory
7. **Version**
Displays the firmware software version.
8. **Connection**
Sets the USB mode
 - Auto: Auto-detect USB mode (MSC or MTP)
 - MSC: Use USB-MSC connection only.
9. **Language**
Sets the language the menus appear in.

USB CONNECTIONS

Minimum PC Requirements



You can connect the MP-C945 to a computer with the USB 2.0 cable provided to transfer files to your player or to charge its battery. The minimum requirements listed below will allow you to perform basic file management functions; advanced features will require a faster PC and Windows configuration.

- MS Windows 98SE (Service Pack 1) or ME [USB-MSC];
MS Windows 2000 (Service Pack 3 or above) with Windows Media Player 9 [USB-MSC];
MS Windows XP (Service Pack 1 or above) with Windows Media Player 10 [USB-MTP]
- Pentium 166 MMX processor
- 96MB RAM
- 50MB of available hard drive space
- Internet connection
- MS Internet Explorer 5.5
- Video Display card
- Sound card
- USB 1.0 port (a USB 2.0 port will enable file transfers up to 40 times faster)

USB Mode Auto-Detection (MSC/MTP)

The MP-C945 comes equipped with a dual-mode USB 2.0 port. Your player will auto-detect the type of computer system that it is connected to and will automatically switch to either **USB-Mass Storage Class (USB-MSC)** mode or **USB-Media Transfer Protocol (USB-MTP)** mode. Both USB modes allow for simple, high-speed transfers of files between your player and a computer, and allow you to use your computer's operating system to view, manage, and transfer files to your player from your computer

There are, however, a few differences to take note of.

	
Simple plug-and-play support for all major operating systems (Microsoft Windows 98SE/ME/2000, Macintosh OS X, Linux)	Simple plug-and-play support for Microsoft Windows XP with Service Pack 1 and Windows Media Player 10 (or newer)
Supports Windows Media DRM 9	Supports Windows Media DRM 9 (WMDRM9) Supports Windows Media DRM 10 (WM-DRM10) -- requires Windows XP and Windows Media Player 10 or newer
--	Windows Media Playlist support
USB 2.0 high-speed file transfers	USB 2.0 high-speed file transfers
Database rebuild required after each USB connection	Database rebuild not required

USB CONNECTIONS

In general, USB-MSC mode enjoys wider compatibility with different computers and operating systems, while USB-MTP mode enables advanced features (e.g., playlist synchronization), but requires Windows XP SP1 and Windows Media Player 10 or newer.

You may set the MP-C945 to always use MSC mode or to auto-detect the connection under Setup > Connections (refer to the Setup section for more information).



To transfer and synchronize encrypted WMDRM10 files, USB-MTP mode (in conjunction with Windows XP and Windows Media Player 10) is required. Most online music stores and subscription services use WMDRM10 files*. Please refer to the documentation of either Microsoft or the store from which you purchased your music for more information and support.

WMDRM9 may be used for music purchases, only. WMDRM10 is necessary for subscription-based services.

Content owners use Windows Media digital rights management technology (WMDRM) to protect their intellectual property, including copyrights. This device uses WMDRM software to access WMDRM-protected content. If the WMDRM software fails to protect the content, content owners may ask Microsoft to revoke the software's ability to use WMDRM to play or copy protected content. Revocation does not affect unprotected content. When you download licenses for protected content, you agree that Microsoft may include a revocation list with the licenses. Content owners may require you to upgrade WMDRM to access their content. If you decline an upgrade, you will not be able to access content that requires the upgrade.

*** A few examples of online music stores that support WMDRM are:** AOL Music Now, Napster To Go, URGE, Virgin Digital, and Y! Music (Yahoo! Music).



Music purchased and downloaded from the iTunes music store are AAC files encrypted with Apple Fairplay DRM. The MP-C945 does not support AAC file playback. Please use only MP3, WMA, or WAV music files with your player.

USB Driver Installation (Required for Windows 98 SE Only)

It is not necessary to install the USB driver if your computer is running Microsoft Windows ME/2000/XP or newer, or Macintosh OS X. Computers running these operating systems will recognize your player automatically when connected.

If your computer is running Windows 98 SE:

1. Insert the Installation CD into your computer's CD or DVD drive. Make sure to place the mini-CD in the center, recessed well of the drive tray.
2. Navigate to MY COMPUTER and double-click on the CD/DVD drive icon (usually "D:").
3. Double-click on the folder "Win98 USB Drivers" and then on the folder "english".
4. Double-click on the SETUP icon (SETUP.EXE) to start the USB driver installation program.
5. Follow the on-screen instructions to complete the installation and then restart your computer.

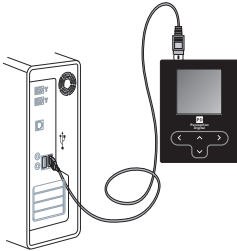
Note:

Mini-CDs should only be used in normal tray-loading CD/DVD drives. Mini-CDs may be used in slot-loading drives with the proper adapter; please contact your computer or drive manufacturer for more information.

USB CONNECTIONS

Connecting to a Computer

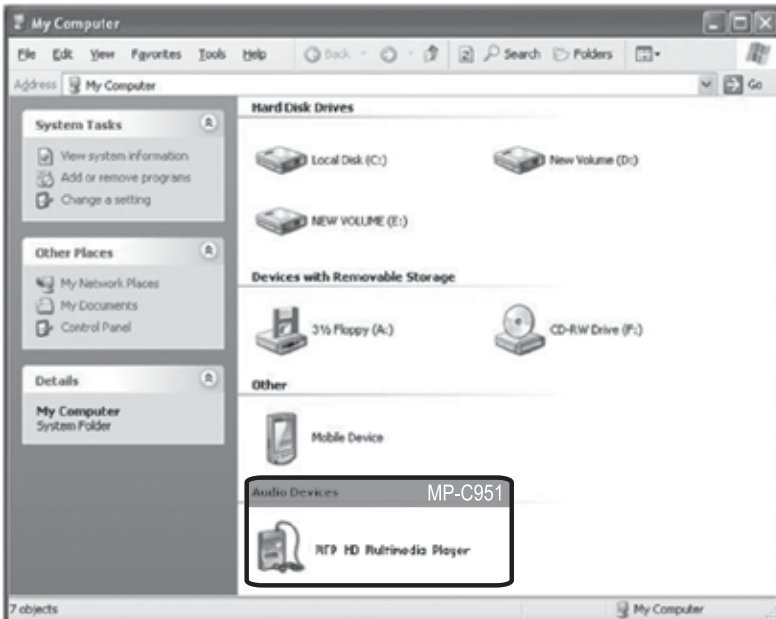
Connect the player to your computer with the supplied USB cable.



USB-MTP Mode

When the MP-C945 is connected under USB-MTP mode:

- Your computer will automatically recognize the player as an MTP Device. An icon representing your player will appear under "Audio Devices" when you open "My Computer".
- It may take Windows several minutes to recognize and set up the device the first time it is connected depending on your hardware configuration.

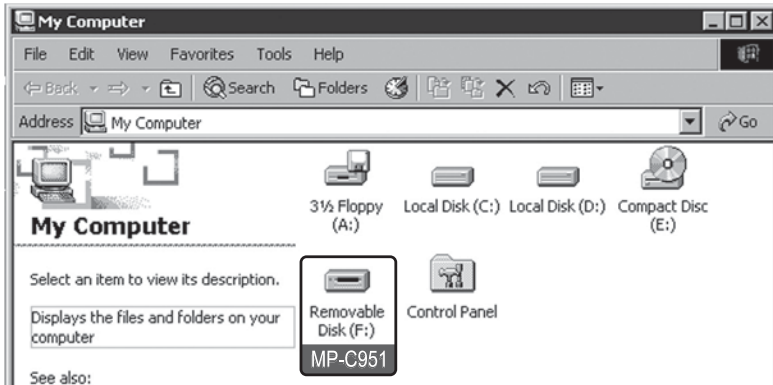


USB CONNECTIONS

USB-MSC Mode

When the MP-C945 is connected under USB-MSC mode:

- Your computer will automatically recognize the player as an MTP Device. An icon representing your player will appear as a "Removable Disk" when you open "My Computer".
- It may take Windows several minutes to recognize and set up the device the first time it is connected depending on your hardware configuration.



Transferring Files

The USB 2.0 High-Speed connection makes it easy to transfer music, video, photo, and text files (or any other data) quickly between the player and your computer. Simply use the player as you would a floppy disk using basic operating system commands.

If you need further assistance with transferring files, please refer to your operating system's instruction manual or on-screen help. If you are using media management software such as iTunes, Winamp, or Windows Media Player, please refer to their documentation for support.



Do not disconnect or otherwise interrupt the player during transmission - this could damage or corrupt the player's firmware or your files. If the player is accidentally disconnected and is not working properly, reset your player (see the [Powering Your Player](#) section for details).

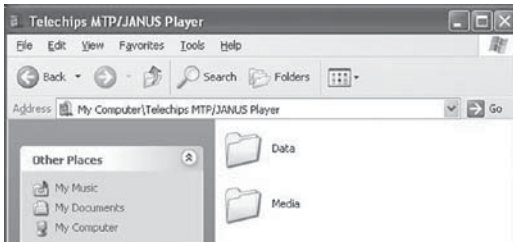
USB CONNECTIONS

USB-MTP Mode

Files transferred under USB-MTP mode will not be available when using a USB-MSC connection (and vice versa).

When the MP-C945 is connected under USB-MTP mode:

1. Double-click the "My Computer" icon on your desktop and then double-click the MP-C945 icon (MTP HD Multimedia Player).
2. Your player contains two folders: Data and Media.
 - Drag your media files to the Media folder (e.g., MP3, AVI, JPG, WAV, WMA files).
 - Drag all other types of files to the Data folder for storage (e.g., TXT, DOC, XLS, etc). Data files are only visible from a computer; these files will not be available from within the player itself.

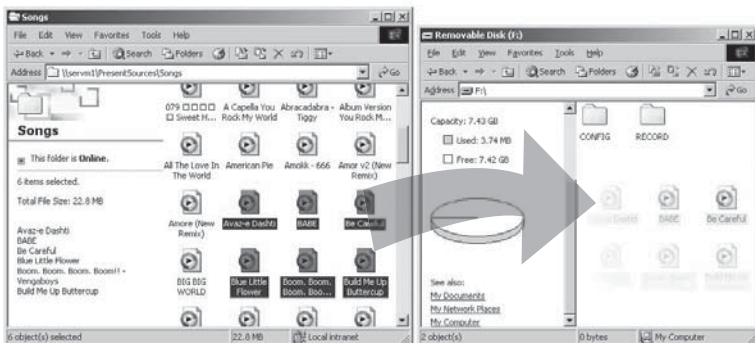


USB-MSC Mode

Files transferred under USB-MSC mode will not be available when using a USB-MTP connection (and vice versa).

When the MP-C945 is connected under USB-MSC mode:

1. Double-click the "My Computer" icon on your desktop and then double-click the MP-C945 icon (Removable Disk).
2. Drag your media files (or other files) to the Removable Disk.
 - You may choose to use folders/subfolders to organize your media and data.



USB CONNECTIONS

Disconnecting from a Computer

Disconnect your player as instructed below to prevent data loss or file/firmware corruption.

USB-MTP Mode

If you are using a USB-MTP connection, you can simply disconnect the cable from your player.

USB-MSC Mode

1. Double-click the green arrow in the taskbar located on the lower-right side of the computer screen (Safely Remove Hardware).
2. **Safely Remove Hardware:** Select "USB Mass Storage Device" from the list that appears and then click on "Stop".
Stop a Hardware Device: Select "USB Mass Storage Device" from the list that appears and then click on "OK".
Select "USB Mass Storage Device" from the list that appears and then click on "OK".
3. When the "Safe to Remove Hardware" window appears, click the OK button and disconnect the USB cable from the player and your computer.



Build Music Library (USB-MSC Mode Only)

After disconnecting from a computer, your player will take a few moments to rebuild the music library (file database).



VIDEO CONVERSION

Use the video conversion software utility included on the Installation CD to create video files that are suitable for playback on the MP-C945.

Your player supports XviD-encoded AVI files with the following specifications:

- 128 x 128 resolution at 15 frames per second (fps)

Note:

The video conversion software is included for your convenience and is compatible with Microsoft Windows operating systems only. There are many other video conversion utilities available for download or purchase on the internet.

Because the program is licensed free of charge, there is no warranty for the program, to the extent permitted by applicable law. Except when otherwise stated in writing the copyright holders and/or other parties provide the program "as is" without warranty of any kind, either expressed or implied, including, but not limited to, the implied warranties of merchantability and fitness for a particular purpose. The entire risk as to the quality and performance of the program is with you. Should the program prove defective, you assume the cost of all necessary servicing, repair or correction.

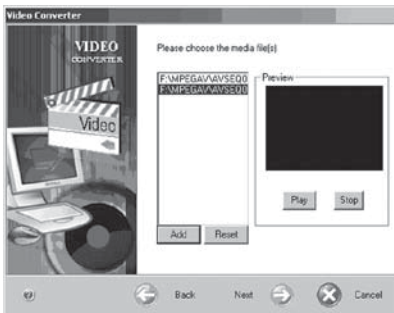
In no event unless required by applicable law or agreed to in writing will any copyright holder, or any other party who may modify and/or redistribute the program as permitted above, be liable to you for damages, including any general, special, incidental or consequential damages arising out of the use or inability to use the program (including but not limited to loss of data or data being rendered inaccurate or losses sustained by you or third parties or a failure of the program to operate with any other programs), even if such holder or other party has been advised of the possibility of such damages.

Installation

Please refer to the Installation CD for software installation procedures.

Converting Video

1. Select the source video file to convert. The source file must be a generic AVI or MPEG-1 format.
2. Start the video conversion software. Click "Add" and choose the source file (you can preview the video in the right panel) and then click "Next".

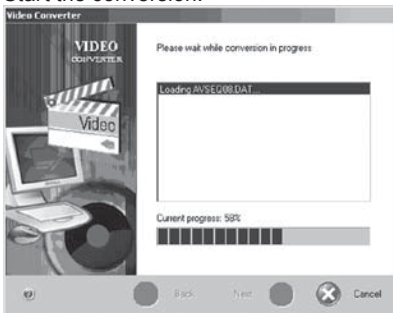


VIDEO CONVERSION

3. Select the destination folder that the converted file will be saved to. You may also choose to preserve the original aspect ratio.



4. Start the conversion.



When the conversion is complete, copy the converted files to your player for playback.

WINDOWS MEDIA PLAYER

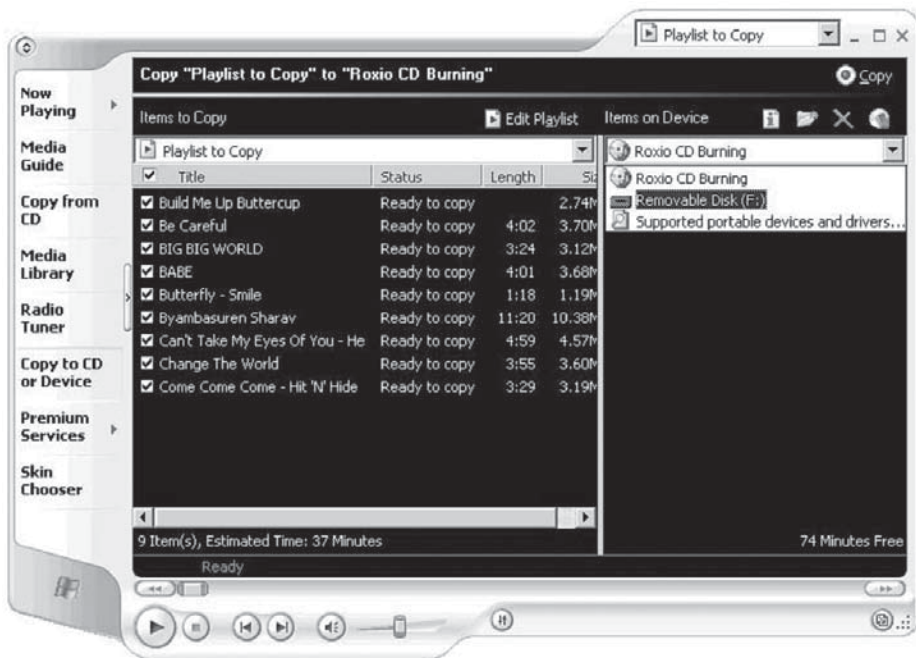
Windows Media Player 9 (WMP9)

You can use Windows Media Player 9 (WMP9) and a USB-MSC connection to manage your music media library with Microsoft Windows 98SE/ME/2000.

Music File Transfers

To transfer files using WMP9:

1. Run Window Media Player 9
2. Connect your player to the computer
3. Select "Copy to CD or Device".
4. Drag the desired songs, photos, or converted video files from the PC to the left pane.
5. Select "Removable Disk".
6. Click "Copy".



WINDOWS MEDIA PLAYER

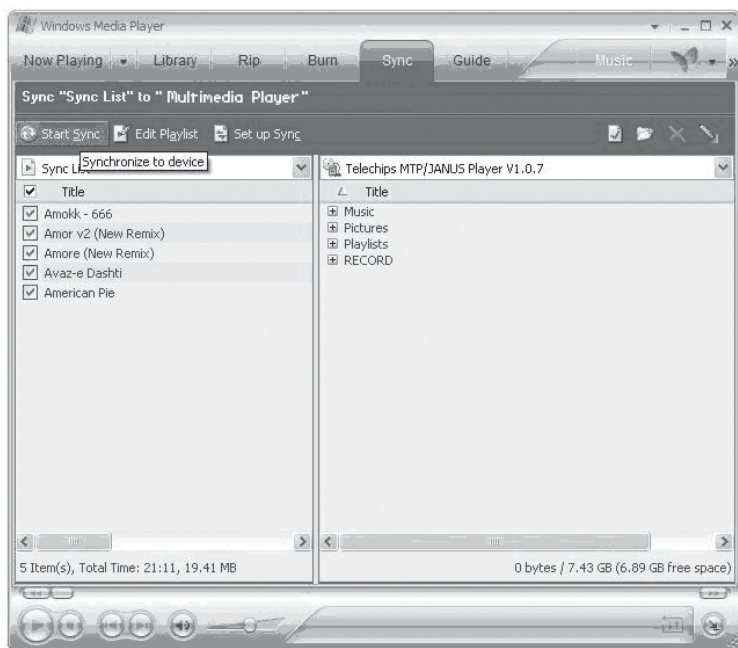
Windows Media Player 10 (WMP10)

You can use Windows Media Player 10 (WMP10) and a USB-MTP connection to manage your music media library with Microsoft Windows XP or newer.

Music File Transfers

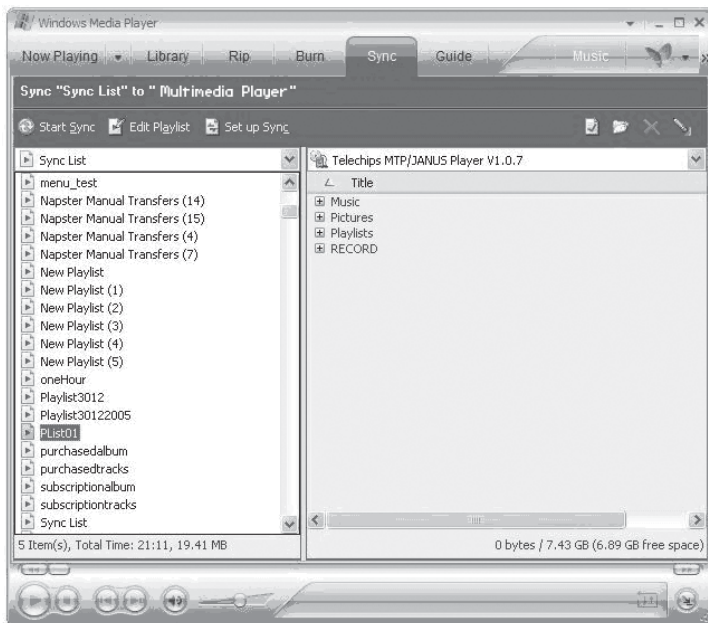
To transfer files using WMP10:

1. Run Window Media Player 10
2. Connect your player to the computer. A "Device Setup" window will appear.
3. In the "Device Setup" window, choose "Synchronize this device with this library for this session only" and click "Finish".
4. Select "Sync". There are 2 ways to sync your files with your player:
 - **Drag your songs, photos, or converted video files to the sync list on the left hand side.** Click "Start Sync" to start transferring the selected files.



WINDOWS MEDIA PLAYER

- **Select a playlist from the “Sync List” drop-down menu.** Click “Start Sync” to start transferring the files in the selected playlist.



For more information and support regarding music transfer and synchronization with Windows Media Player (WMP), please see the help section included with WMP (click Help > Synchronizing Content to Devices).

Creating Playlists

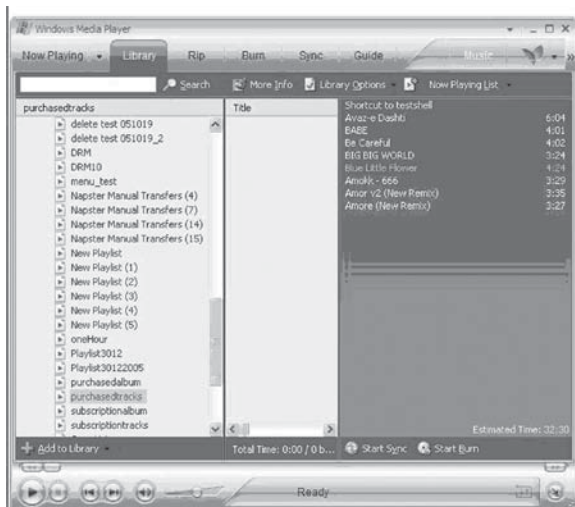
Playlists are an easy way to organize and store your favorite music mixes so you can listen to them whenever you want.

When a playlist is transferred using Windows Media Player, every song in the playlist will be transferred as well.

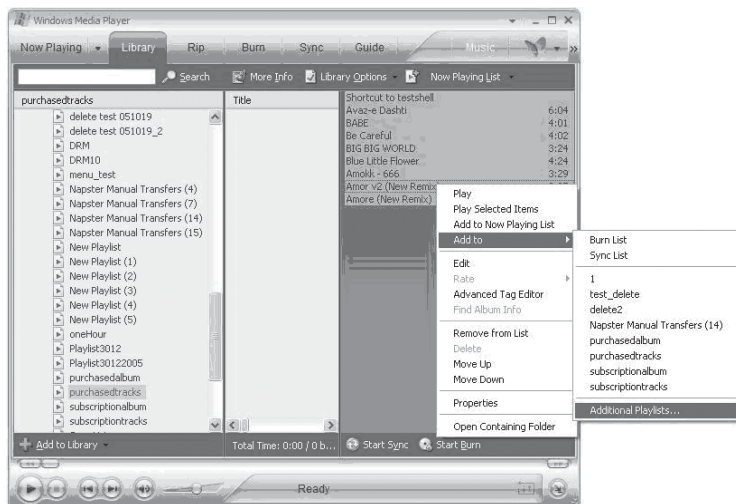
WINDOWS MEDIA PLAYER

To create playlists using WMP10:

1. Run Window Media Player 10
2. Select “Library” and then drag the desired song(s) to the “Now Playing List” on the right side.



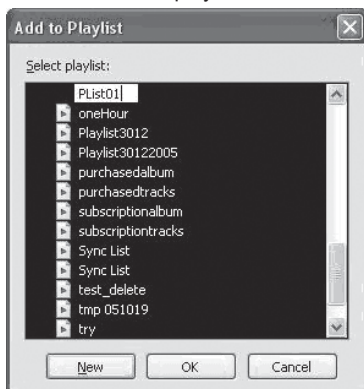
3. Highlight all of the songs in the “Now Playing List” and then use the mouse to right-click the list. Choose “Add to” and then “Additional Playlists...”



An “Add to Playlist” window will appear.

WINDOWS MEDIA PLAYER

4. Select “New” and enter the playlist name, then click “OK”. A new playlist will be created.

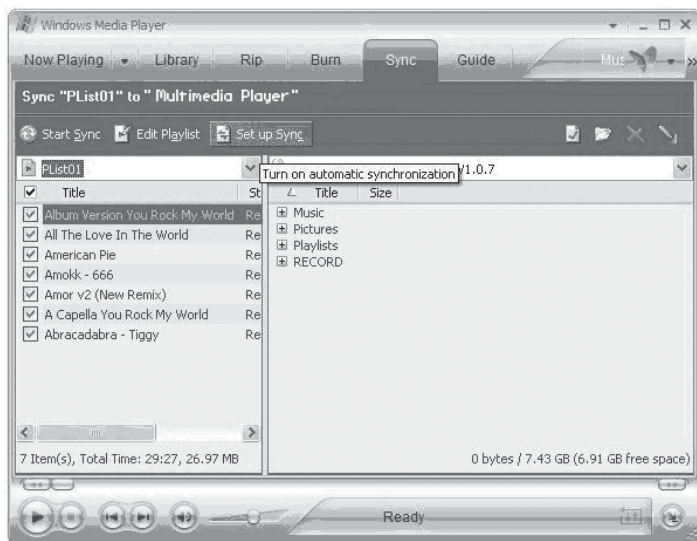


Automatic Windows Media Playlist Synchronization

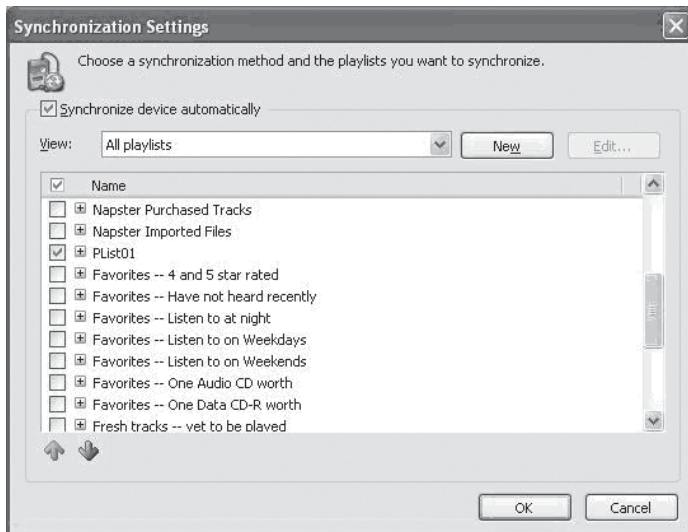
By default, WMP is set to transfer and synchronize files manually. You can choose to have Windows Media Player automatically synchronize your playlists when you connect your player to the computer.

To change the synchronization settings:

1. Connect your player with the computer and run Window Media Player 10.
2. In the SYNC menu, click the “Set up Sync” button. A “Synchronization Settings” window will appear.
3. Check “Synchronize device automatically” and check the playlist(s) you want to sync.



4. Click "OK" to start the synchronization.



5. When synchronization is complete, disconnect your player from the computer.
6. Turn on your player and select "Music".
7. The synchronized playlist(s) from WMP will have been added under the "Playlist" category.

FIRMWARE UPDATES

From time to time, COBY may release firmware updates to improve MP-C945 performance or to add additional features. Please check the COBY website at www.cobyusa.com periodically to see if new firmware (and update instructions) have been released for your player.

If you are experiencing abnormal behavior with your player, you may choose to first restore (format) the player and then update its firmware.

TROUBLESHOOTING

If you have a problem with this player, please read the troubleshooting guide below and check our website at www.cobyusa.com for Frequently Asked Questions (FAQs) and firmware updates. If these resources do not resolve the problem, please contact Technical Support.

COBY Electronics Technical Support

Hours: Monday to Friday, 8:30 AM–11:00 PM EST
Saturday to Sunday, 9:00 AM–11:00 PM EST

Email: techsupport@cobyusa.com

Phone: 800-681-2629 or 718-416-3197

Web: www.cobyusa.com

The player does not turn on.

- The battery level may be too low. Try charging the player or operate the player on AC power.
- Ensure that the Lock switch is disengaged.
- Reboot the player (slide and hold the Power/Lock switch to the right for several seconds) and try again.

The player does not turn charge when connected to a computer (USB charge).

- Reboot the player (slide and hold the Power/Lock switch to the right for several seconds) and try again.

There is no sound during playback.

- Check the volume level.
- Ensure that the headphones are attached securely to the player.

The sound quality of the music is poor.

- Try playing the file on your computer. If the sound quality is still poor, try downloading the file again or re-encoding the file yourself.
- Ensure that the bit rate of the file is not too low. The higher the bit rate of the file, the better it will sound. The minimum recommended bitrate is 128kbps for MP3s and 96kbps for WMAs.
- Ensure that the headphones are attached securely to the player.

The buttons do not work.

- Ensure that battery is charged or that the player is operating on AC power.
- Ensure that the Lock switch is disengaged.

The player will not play my music file.

- Ensure that the file is in a compatible format (MP3, WMA, or WAV).
- The file may be copy-protected. Use Windows Media Player to transfer the file.
- The file may be copy-protected. Ensure that the license has not expired.

The LCD characters are corrupted.

- Ensure that the correct language has been selected. Try transferring some songs and restart the player to automatically rebuild the Music Library.

TROUBLESHOOTING

The player will not play my video file.

- Ensure that the video file will play on your computer using Windows Media Player 10. If the file works on the computer, use the same computer to convert the video.

I cannot transfer files to the player.

- Ensure that your computer is running a supported operating system.
- If you are running Microsoft Windows 98 SE, ensure that the USB driver has been properly installed.
- Ensure that the supplied USB cable is securely attached to the player and the PC, or try using another USB cable.
- If you have connected the player through a USB hub, try connecting the player directly to your computer.
- Ensure that the player's memory capacity is not full.
- Ensure that there are less than 2500 items loaded on the player.

I transferred files to my player but they are missing from the Music Library

- Ensure that the file is in a supported format (MP3, AVI, JPG, WAV, WMA).
- Ensure that there are less than 2500 items loaded on the player.
- If the player is in MTP mode, ensure that there are less than 2500 items loaded on the player.

I cannot see some files on my computer.

- Ensure that the correct USB mode is in use (MSC or MTP). Files transferred in one mode will not be seen when connected in another mode.

The player has malfunctioned.

- Reboot the player (slide and hold the Power/Lock switch to the right for several seconds).
- Try updating the player's firmware. Please refer to the [Firmware Update](#) section of this manual for detailed instructions.

SPECIFICATIONS

Display Type	1.5" True-Color OLED
Display Resolution	128 x 128
Memory	4GB 1" Micro-HDD 2500 file/folder system limit
Audio Format Support	MP3, WMA, WAV
Video Format Support	MPEG-4 (XviD): 128 x 128, 15fps
Photo Format Support	JPEG
Song Info Support	ID3, Windows Media
PC Interface	USB 2.0 High-Speed Dual-Mode (MSC and MTP)
DRM Support	Windows Media DRM 10 (Requires Windows XP and Windows Media Player 10 or higher) Windows Media DRM 9 (Requires Windows 98SE and Windows Media Player 9 or higher)
Plug and Play Support	Windows 98SE/2000/ME/XP or newer
Audio Output	3.5mm Stereo (Headphone)
Audio Input	Integrated Microphone
Menu Language Support	English, Spanish, Portuguese
Power Supply	Integrated Rechargeable Lithium-ion Battery 100-240V AC Adapter USB Charge
Unit Dimensions	2.48" x 1.85" x 0.73" (WHD)
Weight	2.1 oz

Specifications are subject to change without notice.

NOTES

COBY Electronics Corp.

56-65 Rust Street
Maspeth, NY 11378

www.cobyusa.com
www.ecoby.com

Free Manuals Download Website

<http://myh66.com>

<http://usermanuals.us>

<http://www.somanuals.com>

<http://www.4manuals.cc>

<http://www.manual-lib.com>

<http://www.404manual.com>

<http://www.luxmanual.com>

<http://aubethermostatmanual.com>

Golf course search by state

<http://golfingnear.com>

Email search by domain

<http://emailbydomain.com>

Auto manuals search

<http://auto.somanuals.com>

TV manuals search

<http://tv.somanuals.com>