

Installation Guide

Dell® Wyse D Class Conversion to WES7

Wyse USB Firmware Tool™ Release 1.20.0.1

Products: D10D, D50D, D90DW

Issue: 040914

PN: 883887-38L Rev. A



Copyright Notices

© 2014, Dell Inc. All Rights Reserved.

This manual and the software and firmware described in it are copyrighted. You may not reproduce, transmit, transcribe, store in a retrieval system, or translate into any language or computer language, in any form or by any means, electronic, mechanical, magnetic, optical, chemical, manual or otherwise, any part of this publication without express written permission.

End User License Agreement ("License")

A copy of the End User License Agreement is included in the software and provided for your reference only. The License at <http://www.wyse.com/license> as of the purchase date is the controlling licensing agreement. By copying, using, or installing the software or the product, you agree to be bound by those terms.

Trademarks

The Dell, Wyse, and PocketCloud logos and Wyse and PocketCloud are trademarks of Dell Inc. Other product names mentioned herein are for identification purposes only and may be trademarks and/or registered trademarks of their respective companies. Specifications subject to change without notice.

You acknowledge that the Software is of U.S. origin. You agree to comply with all applicable international and national laws that apply to the Software, including the U.S. Export Administration Regulations, as well as end-user, end-use and country destination restrictions issued by U.S. and other governments. For additional information on exporting the Software, see <http://www.microsoft.com/exporting>.

Ordering Information

For availability, pricing, and ordering information in the United States and Canada, call 1-800-438-9973 or visit us at **Dell.com**. In all other countries, contact your sales representative.

Contents

- 1 Introduction 1**
 - Kit Contents 1
 - Kit Warranty 2
 - Overview 2
 - Dell Technical Support 2
 - Related Documentation and Services 2
 - Dell Online Community 2

- 2 Installing D Class Flash 3**
 - Requirements 3
 - Procedures 3

- 3 Installing WES7 Firmware 7**
 - Requirements 7
 - Procedures 8
 - Troubleshooting 13
 - USB Keys - Troubleshooting Boot Issues 13
 - SanDisk Cruiser Flash Drives - Troubleshooting Partition Issues 13

This page intentionally blank.

1

Introduction

This guide provides step-by-step instructions to use Wyse USB Firmware Tool to convert the following Wyse D class thin clients to WES7:

- D10D (with minimum 2 GB RAM)
- D50D (with minimum 2 GB RAM)
- D90DW (with minimum 4 GB RAM)

CAUTION: WES7 firmware requires D class thin clients to have a minimum of 8 GB Flash and 4 GB RAM (16 GB Flash and 4 GB RAM is recommended).

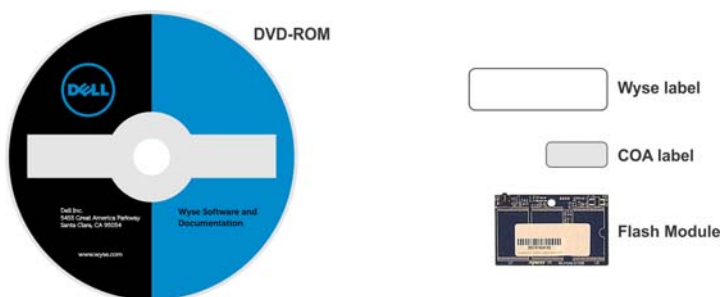
TIP: After converting your thin clients, obtain any available firmware update at <http://www.wyse.com/serviceandsupport/support/downloads.asp>.

Kit Contents

The conversion kit can include:

- Conversion Software Assembly DVD-ROM
- Flash module (16 GB)
- Wyse Conversion Labels (you must attach a Wyse label to each converted thin client)
- Microsoft License Labels (you must attach a COA label to each converted thin client)

Figure 1 Kit contents (items may look different or not be included in your kit)



The Conversion Software Assembly DVD-ROM contains:

- A PDF of this Reference Guide
- Wyse USB Firmware Tool Release 1.20.0.1
- D Class WES7 Conversion Image folder containing the following files:
 - bios.img
 - commandsXml.xml
 - initrd.pxe
 - Merlin.log
 - mbr.img
 - part1image1.img
 - part1image2i.img
 - vmlinuz

Kit Warranty

The warranty on the hardware component of this kit assumes the remaining months of warranty of the thin client in which it is installed, or for 90 days, whichever is greater. Installation of this kit will not void the factory warranty, however the user will be responsible for damage due to improper installation.

Overview

To convert your D class thin clients to WES7:

1. (Optional) If you need to perform a hardware installation (install new flash), complete "Installing Z Class Flash."
 2. (Required) Complete "Installing WES7 Firmware."
-

Dell Technical Support

To access Dell technical resources, visit <http://www.wyse.com/support>. If you still have questions, you can submit your questions using the Self-Service Center at <http://support.wyse.com/selfservice.html> or call Customer Support at 1-800-800-9973 (toll free in U.S. and Canada). Hours of operation are from 6:00 A.M. to 5:00 P.M. Pacific Time, Monday through Friday.

To access international support, visit <http://www.wyse.com/global>.

Related Documentation and Services

Fact Sheets containing the features of hardware products are available on the Dell Web site. Go to <http://www.wyse.com/products> and use the Cloud clients tab to locate and download the Fact Sheet for your hardware product.

Administrator and other documentation for your cloud client model are available at: <http://www.wyse.com/manuals>.

Dell Online Community

Dell maintains an online community where users of our products can seek and exchange information on user forums. Visit the Online Community forums at: <http://community.wyse.com/forum>.

2

Installing D Class Flash

This chapter contains information for users of Wyse D class thin clients who must install new flash.

Requirements

- Small Phillips screwdriver

WARNING: Flash modules may be susceptible to damage by Electro-Static Discharge (ESD). All industry-standard cautions should be followed to avoid ESD. Before you remove or install a module, touch any metal part of the chassis and keep that contact with the chassis during the installation process.

Procedures

CAUTION: Follow all precautions listed in the Quick-Start Guide that came with your thin client for disconnecting and reconnecting the thin client.

1. Perform a proper shutdown of the thin client by closing all files and ending your session, and then pressing the power button to turn off the thin client.
2. Unplug the power cord and power adapter, and remove any other cables from the thin client, and detach the vertical foot.
3. Position the thin client horizontally, where the Wyse logo-side with four flat screws is facing downward. Using the Phillips Screwdriver, remove the three screws from the cover along the back panel edge as shown in Figure 2.

Figure 2 Removing the cover screws



- Place your thumbs on the top surface of the opposite end where the three screws were removed. With a continuous motion, push firmly downward and towards the back panel (pushing down unlatches the hooks under the cover). The cover will shift approximate 1/4 inch to hang over the back panel. **(a)** Grasp the overhanging cover edge and raise the edge about 1-1/2 inches, and then **(b)** pull the cover out towards the back panel at the same angle to free the opposite end of the cover from the remaining hooks, as shown in Figure 3.

Figure 3 Removing the cover



- Remove the cover to expose the main-board shield.

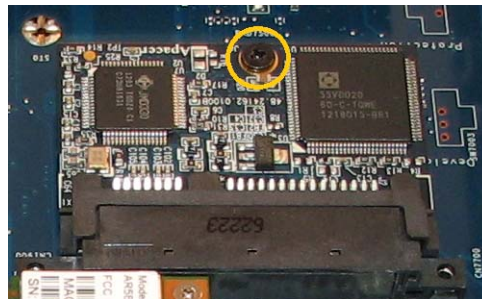
Figure 4 Main-board shield



- Using the Phillips Screwdriver, remove the five screws from the main-board shield (four corner screws and one screw mid-way along the front edge). Remove the main-board shield and unplug the speaker wires (red wire and black wire) to expose the main board and Flash module as shown in Figure 5.
WARNING: Flash modules may be susceptible to damage by Electro-Static Discharge (ESD). All industry-standard cautions should be followed to avoid ESD. Before you remove or install a module, touch any metal part of the chassis and keep that contact with the chassis during the installation process.

Figure 5 Main board and Flash module

7. Remove the existing flash module. Locate the flash module and use the Phillips Screwdriver to remove its retaining screw as shown in Figure 6. Lift the flash module out of the socket.

Figure 6 Removing the existing flash module

8. Install the new flash module in the reverse order of removing the original flash module. Carefully screw down its retaining screw until it is secure.
9. Replace the speaker wires (plug in red wire and black wire) and the main-board shield (five screws).
10. Replace the cover in the reverse order as described in step 4 (align the cover screw tabs with the screw holes and slide the cover toward the front of the thin client).
11. Attach the cover screws in the reverse order as described in step 3.
12. Attach the vertical foot, connect the power cord and power adapter, and then attach any other cables to the thin client.
CAUTION: Do not turn on the thin client. The thin client is ready to re-image, however the flash module does not contain an operating system. Turning on power to your thin client without firmware will display the error message "NO OPERATING SYSTEM FOUND."
13. Continue with "Installing WES7 Firmware."

This page intentionally blank.

3

Installing WES7 Firmware

This chapter includes the requirements and procedures you need to install and use Wyse USB Firmware Tool to update your thin client to WES7 firmware.

TIP: The purpose of the USB Firmware Tool is to configure a bootable USB key for device firmware. In the following procedures, you will create a configured USB key containing the firmware contents that you need, and then boot from this configured USB key on appropriate product and flash size devices to push the contents of the USB key onto these target devices.

EXTREEMLY IMPORTANT: You must perform the steps to create and use the configured USB key on each thin client as noted. You cannot completely convert one thin client and then use the USB Firmware Tool to pull and push that image to your other thin clients.

Requirements

- Machine with a **minimum of 16 GB of free space** running either of the following:
 - Windows Server 2008 R2 SP1
 - Windows 7 Enterprise (32-bit and 64-bit)
 - Windows 7 Ultimate (32-bit and 64-bit)
- USB Key:
 - USB 2.0 only
 - USB key size should be 16 GB (see also "USB Keys - Troubleshooting Boot Issues")

CAUTION: During the USB key configuration process the USB keys will be reformatted.

Procedures

IMPORTANT: Complete the following procedures as an administrator (administrator privileges are required).

Step 1: Copy the D Class WES7 Conversion Image Folder (on the DVD-ROM) to Your Local Hard Drive

Navigate to the D Class WES7 Conversion Image folder (contained on the Conversion Software Assembly DVD-ROM) and copy it to your local hard drive.

Step 2: Install Wyse USB Firmware Tool v1.20.0.1

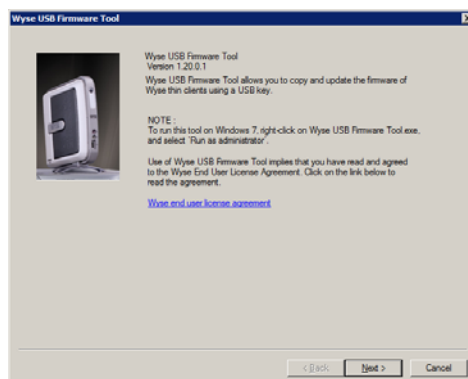
1. Navigate to the Wyse USB Firmware Tool v1.20.0.1_GA.exe (contained on the Conversion Software Assembly DVD-ROM).
2. Right-click the Wyse_USB_Firmware_Tool_v1.20.0.1.exe and click **Run as administrator** to execute the file and open the WinZip Self-Extractor dialog box.
3. Enter the destination folder you want (for example, **C:\USB_v_1.20.0.1**) in the **Unzip to folder** box, and then click **Unzip** to extract all files from the Wyse USB Firmware Tool v1.20.0.1_GA.exe file into the folder. The default directory for the extracted files is **C:\USB_v_1.20.0.1**.
CAUTION: It is not recommended to use your desktop for the destination folder as there are several files that will be extracted from the .exe file.
4. After installation, create a shortcut on the desktop for the Wyse USB Firmware Tool.exe file (see your operating system documentation).

Step 3: Use Wyse USB Firmware Tool to Configure a Single USB Key that will Push Firmware

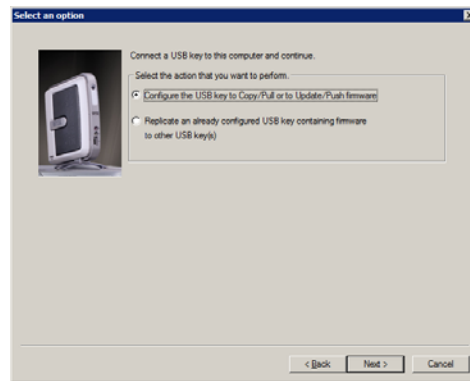
CAUTION: Complete the configuration procedures as an administrator. For Windows 7 Enterprise and Windows 7 Ultimate, right-click on **Wyse USB Firmware Tool.exe** and select the Run as administrator option.

1. Right-click the shortcut on the desktop for the Wyse USB Firmware Tool.exe file and select Run as administrator to run the tool and open the Wyse USB Firmware Tool wizard (the welcome page provides the product version and description, and a link to view the Wyse end user license agreement).

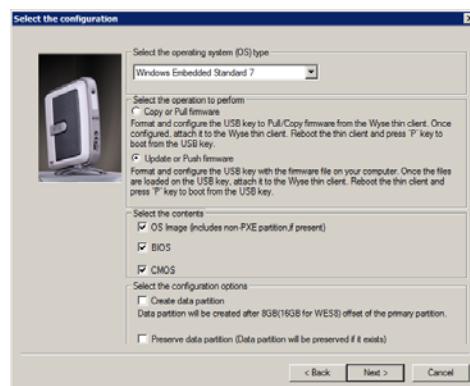
Figure 7 Wyse USB Firmware Tool wizard



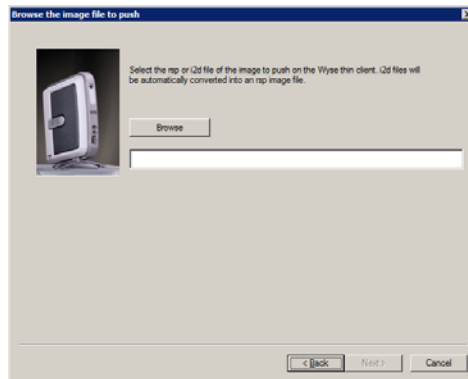
2. Click **Next** to open the **Select an Option** dialog box.

Figure 8 Configuration options

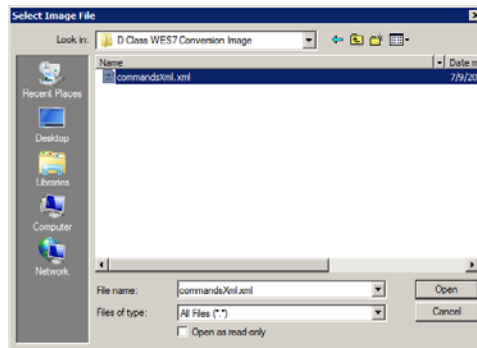
3. Select the **Configure the USB key to Copy/Pull or to Update/Push firmware** option, and then click **Next** to open the **Select the Configuration** dialog box.

Figure 9 Update firmware options - Windows Embedded Standard 7

4. Select the **Windows Embedded Standard 7** operating system (OS) type option.
5. Select the **Update or Push Firmware** operation to perform option. Be sure that all three contents options are selected (**OS Image**, **BIOS**, and **CMOS**).
6. Clear/uncheck the **Preserve data partition** check box.
CAUTION: Details for Thin Clients Currently Using Multiple Data Partitions:
 Your existing custom data partition will not work with the WES7 firmware and you must rebuild your custom data partition after you convert to WES7. Although the **Preserve data partition** check box is automatically selected to preserve any existing custom data partition you may have on the thin client (useful for some firmware platform upgrading use cases), be sure to clear/uncheck the check box to remove the existing data in the custom data partition.
7. Click **Next** to open the browse dialog box.

Figure 10 Browse for image file

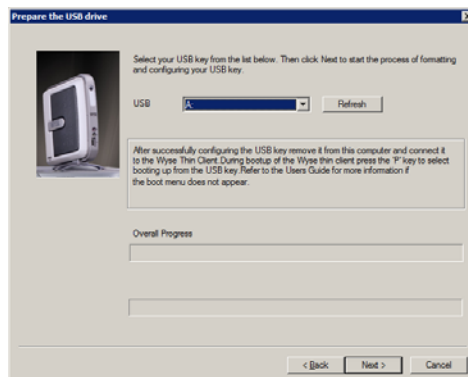
8. Click **Browse**.

Figure 11 Browse to select commandsXml.xml

9. Navigate to the D Class WES7 Conversion Image folder (on your hard drive) that contains the **commandsXml.xml** file (this is the location you selected in "Step 1: Copy the D Class WES7 Conversion Image Folder (on the DVD-ROM) to Your Local Hard Drive"), click on the **commandsXml.xml** file to select it (you may need to select the All Files option from the Files of Type box to display the **commandsXml.xml** file for selection), and then click **Open**.

CAUTION: Be sure to use the **commandsXml.xml** file you extracted in "Step 1: Copy the D Class WES7 Conversion Image Folder (on the DVD-ROM) to Your Local Hard Drive"; DO NOT use the **commandsXml.xml** file directly from the Conversion Software Assembly DVD-ROM.

10. In the browse dialog box, click **Next** to open the **Prepare the USB Drive** dialog box.

Figure 12 Prepare USB drive

11. Select the USB key onto which you want the configurations (you can use **Refresh** as needed to recognize an inserted USB key), and then click **Next**. The progress bars show the overall (formatting and configuration) progress and task progress.

CAUTION: DO NOT interrupt the formatting and configuration process. All process requirements are done automatically.

12. After configuration, click **Finish** to close the wizard and then remove the configured USB key for use (you will use the configured USB key on your target devices).

TIP: At this time you can also replicate/duplicate the configured USB key (containing the firmware you want to push) for simultaneous usage on target devices (by users in several locations at the same time). For full Wyse USB Firmware Tool details, see Users Guide: Dell® Wyse USB Firmware Tool 1.20.0.1.

Step 4: Use the Configured USB Key to Install Firmware on Each Thin Client

In this step, you will boot each target device you want to convert from the configured USB key so that the USB key will push the contents from the USB key onto the target device.

NOTE: BIOS selection, movement, and exit instructions are displayed in the BIOS window.

1. Be sure the client is shut down and disconnected from any network.
2. Attach the configured USB key to a thin client USB 2.0 port.
3. Power on the thin client and during boot, tap and continue tapping the **Delete** key to boot to the BIOS screen.
4. Enter the password **Fireport** (this is case sensitive) and press **Enter**.
5. Select the **Advanced** tab.
6. Using the down arrow key, select the **Boot from USB** option and press **Enter**.
7. Select the **Enabled** option and press **Enter**.
8. Press the **F10** key to save, exit, and reboot the client from the configured USB key. When booting a target device from the configured USB key (containing the contents to be pushed to a target device), you will be prompted to continue with the push process (to continue, type **y** and press **Enter**). Once the push process is complete, the client automatically reboots several times.
CAUTION: DO NOT interrupt the installation/conversion process. All process requirements are done automatically. The client automatically reboots several times. Some screens may display for several seconds during the process.
9. After a target device completes the installation/conversion process and displays the WES7 desktop, remove the USB key and continue with "Step 5: Verifying Thin Client Operation."

TIP: You can use the configured USB key to push the firmware onto as many target devices as you want (repeat "Step 4: Use the Configured USB Key to Install Firmware on Each Thin Client").

Step 5: Verifying Thin Client Operation

After the thin client displays the WES7 desktop, you can verify the Version and that your general client information is correct.

1. On the General tab of the Wyse Client Information window (**Start > All Programs > Wyse Client Information**), verify the following:
 - Version is **9.05 Build 858**.
2. Click **Close** to close the Wyse Client Information window. The thin client is ready for operation and setup by an administrator.

TIP: For security, automatic logon to a User desktop is enabled on the thin client by default (and is a member of the User group; not a member of the Administrator group). To log on as a different user or an administrator: Use the Log off button (**Start > Log off**) to log off the current desktop while holding down the SHIFT key until the Log On window displays. Log on as follows (passwords are case sensitive): Administrators - default Username is **administrator** and default case-sensitive Password is **Wyse#123**. Users - default Username is **user** and default case-sensitive Password is **Wyse#123**. Administrator and other documentation for your thin client model are available at: <http://www.wyse.com/manuals>.

Step 6: Attach a Wyse Conversion Label and Microsoft License Label on Each Converted Thin Client

The conversion kit is supplied with Wyse Conversion Labels and Microsoft License Labels that must be attached to each thin client. Be sure you have purchased the amount of labels you need.

CAUTION: Failure to install the label may cause delays in service and support. The serial number must be given to a Customer Support Technician to validate entitlement to support and service from Dell. Failure to do so will result in the original operating system being loaded on the device and is in breach of your license agreement.

Figure 13 Placement of Wyse Conversion Label (blank example)



Figure 14 Placement of Microsoft License Label (blank example)



Step 7: Obtain a Firmware Update

After converting your thin clients, obtain any available firmware update at <http://www.wyse.com/serviceandsupport/support/downloads.asp>.

WARNING: Use of the Software on more than one device requires that you first purchase from Dell additional copies of, or licenses to, the Software. Contact your local Dell distributor or Dell Inside Sales at 1-800-800-9973 option 1 or 1-408-473-1200 option 1.

Troubleshooting

This section contains general troubleshooting information.

USB Keys - Troubleshooting Boot Issues

Due to different manufacturing processes on USB keys (and the variety of them), not all brands have been tested with the Wyse USB Firmware Tool. If you experience problems booting from a configured USB key, it is recommended that you try a different brand of USB key.

SanDisk Cruiser Flash Drives - Troubleshooting Partition Issues

Problem: How can I properly use a SanDisk Cruiser flash drive to image supported devices using the Wyse USB Firmware Tool? (KB17735)

Solution: SanDisk flash drives come with support for U3. When you initially use these drives, you are prompted to select the use for the drive: Apps and Storage or only Storage. If you select the Apps and Storage option, the drive will create two partitions, one of which is identified as a CD and is a read only partition. This partition sometimes prevents the Wyse USB Firmware Tool to properly prepare the USB key for imaging a device. To resolve this problem you can go to <http://www.sandisk.com>, go to support, search in the SanDisk Knowledge Base for document **2550**, and then follow the instructions in the documentation to remove/uninstall U3 Launchpad.

Installation Guide

**Dell® Wyse D Class Conversion to WES7
Issue: 040914**

Written and published by:
Dell Inc., April 2014

Created using FrameMaker® and Acrobat®

Free Manuals Download Website

<http://myh66.com>

<http://usermanuals.us>

<http://www.somanuals.com>

<http://www.4manuals.cc>

<http://www.manual-lib.com>

<http://www.404manual.com>

<http://www.luxmanual.com>

<http://aubethermostatmanual.com>

Golf course search by state

<http://golfingnear.com>

Email search by domain

<http://emailbydomain.com>

Auto manuals search

<http://auto.somanuals.com>

TV manuals search

<http://tv.somanuals.com>