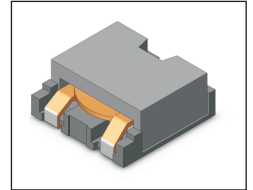


# SMT Power Inductor

## HMU1345, 1350, 1356, 1358, 1360M & 1362M Type

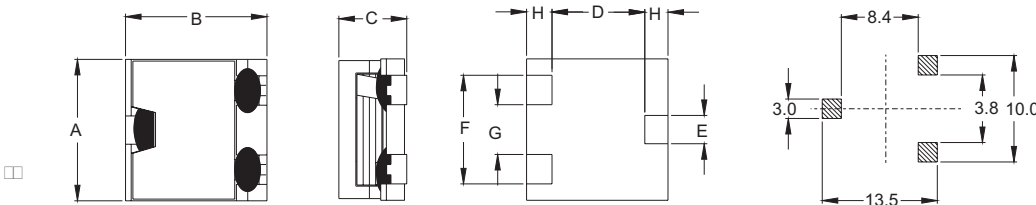
### Features

- RoHS compliant.
- Low profile, SMD type.
- High current.
- Magnetic shielded.
- High energy storage and low DCR.
- Provided with embossed carrier tape packing.
- Ideal for power source circuits, DC-DC converter, DC-AC inverters inductor applications.
- In addition to the standard versions shown here, customized inductors are available to meet your exact requirements.



### Mechanical Dimension :

#### RECOMMENDED PAD PATTERNS



UNIT : mm/inch

A	12.60±0.4 / 0.496±0.016
B	12.70±0.3 / 0.500±0.012
D	8.95 / 0.352
E	2.50 / 0.098
F	9.50 / 0.374
G	4.30 / 0.169
H	1.90 / 0.075

### Electrical Characteristics : 25°C, 100KHz, 1V

PART NO.	L <sup>1</sup> (uH)	Li (uH) MIN.	DCR (mΩ) MAX	I <sub>sat</sub> <sup>2</sup> (Adc)	I <sub>rms</sub> <sup>3</sup> (Adc)	HEIGHT "C" (mm/inch) MAX.
HMU1345-3R2	3.2	2.56	9.0	9.2	9.5	4.5 / 0.177
HMU1345-5R6	5.6	4.50	14.5	5.8	8.0	4.5 / 0.177
HMU1350-1R4	1.4	1.12	3.7	16.0	14.0	5.0 / 0.197
HMU1350-1R6	1.6	1.28	3.7	15.0	14.0	5.0 / 0.197
HMU1350-4R0	4.0	3.20	3.7	7.0	14.0	5.0 / 0.197
HMU1356-0R4	0.4	0.32	1.1	40.0	26.0	5.6 / 0.220
HMU1356-0R6	0.6	0.48	1.1	40.0	26.0	5.6 / 0.220
HMU1356-0R6HS	0.6	0.48	1.9	34.5	20.0	5.6 / 0.220
HMU1356-0R8	0.8	0.64	1.9	31.0	20.0	5.6 / 0.220
HMU1356-1R0LD	1.0	0.80	1.9	25.0	20.0	5.6 / 0.220
HMU1356-1R4	1.4	1.12	3.8	15.5	14.5	5.6 / 0.220
HMU1356-4R4	4.4	3.52	8.0	12.5	10.0	5.6 / 0.220
HMU1356-4R7HS	4.7	3.76	11.4	10.5	8.2	5.6 / 0.220
HMU1358-4R7	4.7	3.76	7.5	9.0	10.0	5.8 / 0.228
HMU1360M-3R1	3.1	2.48	8.0	14.0	10.0	6.0 / 0.236
HMU1362M-5R2	5.2	4.16	9.2	11.0	9.5	6.2 / 0.244

1. Tolerance of inductance is ± 20%.
2. I<sub>sat</sub> is the DC current which cause the inductance drop to Li.
3. I<sub>rms</sub> is the DC current which cause the surface temperature of the part increase less than 45°C.
4. Operating temperature : -20°C to 105°C ( including self-temperature rise ).



**DELTA ELECTRONICS, INC.**

(TAOYUAN PLANT CPBG) 252, SAN YING ROAD, KUEISAN INDUSTRIAL ZONE, TAOYUAN SHIEN, 333, TAIWAN, R.O.C.  
 TEL: 886-3-3591968; FAX: 886-3-3591991  
<http://www.deltawww.com>

## Free Manuals Download Website

<http://myh66.com>

<http://usermanuals.us>

<http://www.somanuals.com>

<http://www.4manuals.cc>

<http://www.manual-lib.com>

<http://www.404manual.com>

<http://www.luxmanual.com>

<http://aubethermostatmanual.com>

Golf course search by state

<http://golfingnear.com>

Email search by domain

<http://emailbydomain.com>

Auto manuals search

<http://auto.somanuals.com>

TV manuals search

<http://tv.somanuals.com>