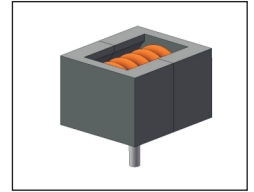


Through Hole Power Inductors

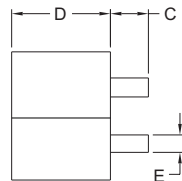
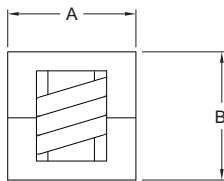
THMR1395 Type

Features

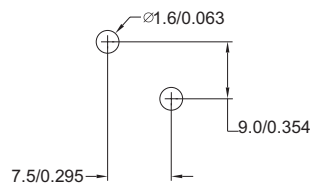
- High current (Isat up to 66A) through hole type.
- Magnetically shielded, suitable for high density mounting.
- High energy storage and low DCR.
- Ideal for power source circuits, DC-DC converter, DC-AC inverters inductor application.
- In addition to the standard versions shown here, customized inductors are available to meet your exact requirements.



Mechanical Dimension:



RECOMMENDED PAD PATTERNS



UNIT : mm/inch
 A = 12.50 / 0.492 Max.
 B = 14.50 / 0.571 Max.
 C = 3.20±0.5 / 0.126±0.020
 D = 9.50 / 0.374
 E = \varnothing 1.30±0.1/0.051±0.004

Electrical Characteristics: At 25°C: 100KHz, 1.0V

PART NO.	L ¹ (uH)	DCR (mΩ)±8%	Isat ² (Adc)	I _{rms} ³ (Adc)
THMR1395-R28	0.28	0.47	66	47
THMR1395-R35	0.35	0.47	58	47
THMR1395-R45	0.45	0.96	47	35
THMR1395-0R6	0.60	0.96	40	35
THMR1395-0R8	0.80	1.25	37	30
THMR1395-1R2	1.20	1.55	30	27

1. Tolerance of inductance : 0.28-1.20uH±15%
2. Isat is the DC current which cause the inductance drop less than 20% of its nominal inductance without current
3. I_{rms} is the DC current which cause the surface temperature of the part increase less than 45°C
4. Operating temperature: -40°C to 125°C (including self-temperature rise)



DELTA ELECTRONICS, INC.

(TAOYUAN PLANT CPBG) 252, SAN YING ROAD, KUEISAN INDUSTRIAL ZONE, TAOYUAN SHIEN, 333, TAIWAN, R.O.C.

TEL: 886-3-3591968; FAX: 886-3-3591991

<http://www.deltawww.com>

Free Manuals Download Website

<http://myh66.com>

<http://usermanuals.us>

<http://www.somanuals.com>

<http://www.4manuals.cc>

<http://www.manual-lib.com>

<http://www.404manual.com>

<http://www.luxmanual.com>

<http://aubethermostatmanual.com>

Golf course search by state

<http://golfingnear.com>

Email search by domain

<http://emailbydomain.com>

Auto manuals search

<http://auto.somanuals.com>

TV manuals search

<http://tv.somanuals.com>