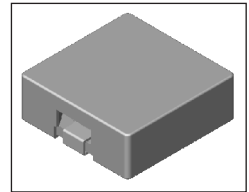


SMT Power Inductor

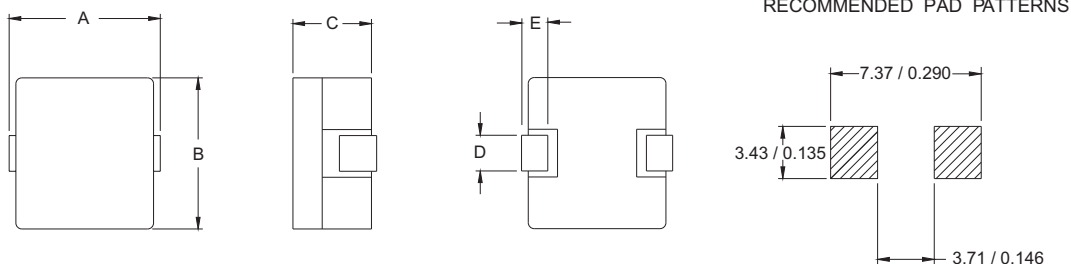
HAH842 Type

Features

- RoHS compliant.
- Low profile, SMD type.
- High current.
- Magnetic shielded.
- High energy storage and low DCR.
- Provided with embossed carrier tape packing.
- Ideal for power source circuits, DC-DC converter, DC-AC inverters inductor applications.
- In addition to the standard versions shown here, customized inductors are available to meet your exact requirements.



Mechanical Dimension :



UNIT : mm/inch
 A = 7.50 / 0.295 Max.
 B = 7.00 / 0.276 Max.
 C = 4.20 / 0.165 Max.
 D = 1.20±0.2 / 0.047±0.008
 E = 1.50±0.254 / 0.059±0.01

Electrical Characteristics : At 25°C , 100KHz, 1V

PART NO.	Lo ¹ (uH)	Li (uH)	DCR (mΩ) MAX	Isat ² (A dc)	I _{rms} ³ (A dc)
HAH842-3R3	3.3	2.64	30	13.5	6.0
HAH842-4R7	4.7	3.76	40	10.0	5.5
HAH842-6R8	6.8	5.44	60	8.0	4.5
HAH842-8R2	8.2	6.56	68	7.5	4.0
HAH842-100	10.0	7.50	105	5.0	3.0

1. Lo is the initial inductance and the tolerance of inductance is ±20%.
2. Isat is the DC current which cause the inductance drop to Li.
3. I_{rms} is the DC current which cause the surface temperature of the part increase less than 45°C.
4. Operating temperature : -40°C to 125°C (including self-temperature rise).



DELTA ELECTRONICS, INC.

(TAOYUAN PLANT CPBG) 252, SAN YING ROAD, KUEISAN INDUSTRIAL ZONE, TAOYUAN SHIEN, 333, TAIWAN, R.O.C.
 TEL: 886-3-3591968; FAX: 886-3-3591991
<http://www.deltaww.com>

Free Manuals Download Website

<http://myh66.com>

<http://usermanuals.us>

<http://www.somanuals.com>

<http://www.4manuals.cc>

<http://www.manual-lib.com>

<http://www.404manual.com>

<http://www.luxmanual.com>

<http://aubethermostatmanual.com>

Golf course search by state

<http://golfingnear.com>

Email search by domain

<http://emailbydomain.com>

Auto manuals search

<http://auto.somanuals.com>

TV manuals search

<http://tv.somanuals.com>