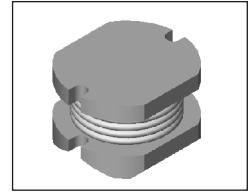


SMT Power Inductor

SI523 Type

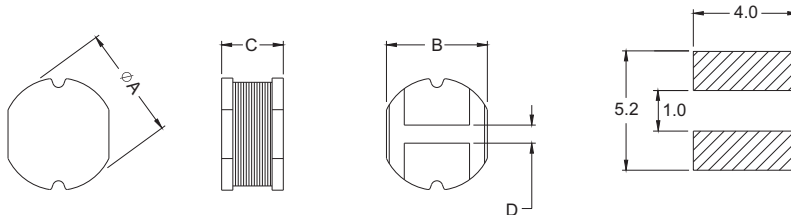
Features

- RoHS compliant.
- Low profile (2.3mm max. Height) SMD type.
- Unshielded.
- Self-leads ,suitable for high density mounting.
- High energy storage and low DCR.
- Provided with embossed carrier tape packing.
- Ideal for power source circuits, DC-DC converter, DC-AC inverters inductor applications.
- In addition to the standard versions shown here, customized inductors are available to meet your exact requirements



Mechanical Dimension :

RECOMMENDED PAD PATTERNS



UNIT:mm/inch
 A = 4.5±0.15 / 0.177±0.006
 B = 4.0±0.15 / 0.157±0.006
 C = 2.3/0.091 Max.
 D = 1.0±0.2 / 0.039±0.008

Electrical Characteristics : 25°C, 100KHz, 0.1V

PART NO.	L ¹ (uH)	DCR (Ω) MAX	I _{rated} ² (Adc)
SI523 - 3R9	3.9	0.068	1.60
SI523 - 4R7	4.7	0.087	1.45
SI523 - 8R2	8.2	0.150	1.10
SI523 - 100	10.0	0.195	1.00
SI523 - 150	15.0	0.260	0.90
SI523 - 220	22.0	0.383	0.67
SI523 - 470	47.0	0.750	0.44

1. Tolerance of inductance: ±15% for 3.9~8.2uH, ±10% for 10~47uH.
2. I_{rated} is the DC current which cause the inductance drop less than 10% of its nominal inductance without current and the surface temperature of the part increase less than 45°C.
3. Operating temperature : -20°C to 105°C (including self-temperature rise).



DELTA ELECTRONICS, INC.

(TAOYUAN PLANT CPBG) 252, SAN YING ROAD, KUEISAN INDUSTRIAL ZONE, TAOYUAN SHIEN, 333, TAIWAN, R.O.C.

TEL: 886-3-3591968; FAX: 886-3-3591991

<http://www.deltawww.com>

Free Manuals Download Website

<http://myh66.com>

<http://usermanuals.us>

<http://www.somanuals.com>

<http://www.4manuals.cc>

<http://www.manual-lib.com>

<http://www.404manual.com>

<http://www.luxmanual.com>

<http://aubethermostatmanual.com>

Golf course search by state

<http://golfingnear.com>

Email search by domain

<http://emailbydomain.com>

Auto manuals search

<http://auto.somanuals.com>

TV manuals search

<http://tv.somanuals.com>