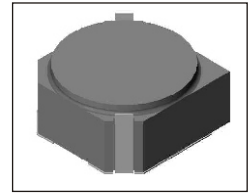


SMT Power Inductor

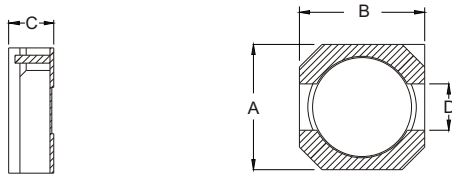
SIL525 Type

Features

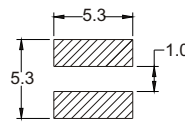
- RoHS compliant.
 - Small size (4.8mm*4.8mm), low profile (2.5mm max. height) SMD type.
 - Magnetically shielded, suitable for high density mounting.
 - High energy storage and low DCR.
 - Provided with embossed carrier tape packing.
 - Ideal for power source circuits, DC-DC converter, DC-AC inverters inductor application.
- In addition to the standard versions shown here, customized inductors are available to meet your exact requirements.



Mechanical Dimension:



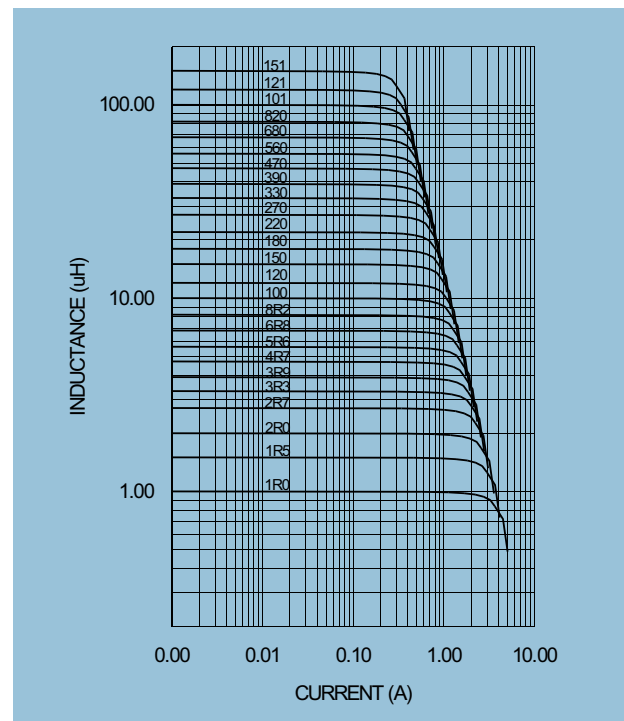
RECOMMENDED PAD PATTERNS



UNIT:mm/inch
 A = 5.0 / 0.197 Max.
 B = 5.0 / 0.197 Max.
 C = 2.5 / 0.098 Max.
 D = 1.5±0.1 / 0.059±0.004

Electrical Characteristics: 25°C, 100KHz, 0.1V

PART NO.	L ¹ (uH)	DCR (Ω) MAX	I _{rated} ² (A dc)
SIL525 - 1R0	1.0	0.038	3.20
SIL525 - 1R5	1.5	0.045	2.70
SIL525 - 1R8	1.8	0.050	2.30
SIL525 - 2R2	2.2	0.053	2.10
SIL525 - 2R7	2.7	0.056	2.00
SIL525 - 3R3	3.3	0.063	1.80
SIL525 - 3R9	3.9	0.071	1.60
SIL525 - 4R7	4.7	0.077	1.50
SIL525 - 5R6	5.6	0.083	1.40
SIL525 - 6R8	6.8	0.094	1.10
SIL525 - 8R2	8.2	0.105	1.00
SIL525 - 100	10.0	0.112	0.95
SIL525 - 120	12.0	0.162	0.80
SIL525 - 150	15.0	0.176	0.80
SIL525 - 180	18.0	0.192	0.72
SIL525 - 220	22.0	0.224	0.70
SIL525 - 270	27.0	0.261	0.60
SIL525 - 330	33.0	0.372	0.58
SIL525 - 390	39.0	0.394	0.52
SIL525 - 470	47.0	0.457	0.47
SIL525 - 560	56.0	0.514	0.45
SIL525 - 680	68.0	0.686	0.40
SIL525 - 820	82.0	0.802	0.35
SIL525 - 101	100.0	1.162	0.32
SIL525 - 121	120.0	1.298	0.30
SIL525 - 151	150.0	1.423	0.27



1. Tolerance of inductance : ± 30%.
2. I_{rated} is the DC current which cause the inductance drop less than 35% of its nominal inductance without current and the surface temperature of the part increase less than 45°C.
3. Operating temperature: -20°C to 105°C (including self-temperature rise).



DELTA ELECTRONICS, INC.

(TAOYUAN PLANT CPBG) 252, SAN YING ROAD, KUEISAN INDUSTRIAL ZONE, TAOYUAN SHIEN, 333, TAIWAN, R.O.C.

TEL: 886-3-3591968; FAX: 886-3-3591991

<http://www.deltawww.com>

Free Manuals Download Website

<http://myh66.com>

<http://usermanuals.us>

<http://www.somanuals.com>

<http://www.4manuals.cc>

<http://www.manual-lib.com>

<http://www.404manual.com>

<http://www.luxmanual.com>

<http://aubethermostatmanual.com>

Golf course search by state

<http://golfingnear.com>

Email search by domain

<http://emailbydomain.com>

Auto manuals search

<http://auto.somanuals.com>

TV manuals search

<http://tv.somanuals.com>