

User's Manual

CH2

Monitor Hood

Thank you very much for choosing an EIZO product.

Please read this User's Manual carefully to familiarize yourself with safe and effective usage procedures.

Please retain this manual for future reference.



PRECAUTIONS

- To ensure personal safety and proper maintenance, please read this section.



CAUTION

Do not carry the monitor with attaching the hood.

Doing so may cause the hood to drop or slip off, which may result in injury or equipment damage.

Do not put any object on the hood.

Doing so may cause the hood to drop or monitor to fall, which may result in injury or equipment damage.



Do not use other screws than the specified ones.

Doing so may cause the hood to drop, which may result in injury or equipment damage.



Attach only to specified EIZO LCD monitors.

Attach only to specified EIZO LCD monitors. Attaching to other monitors may cause the hood to drop, which may result in injury or equipment damage. For the specified monitors, please visit our website at <http://www.eizo.com>.

Package Contents

Please contact your local dealer for assistance if any of the listed items are missing or damaged.

- Left Hood
- Right Hood
- Top Hood
- User's Manual
- Screws M3×8 4pcs
- Screws M3×16 4pcs
- Screw Caps 6 pcs (2 pcs for spare)

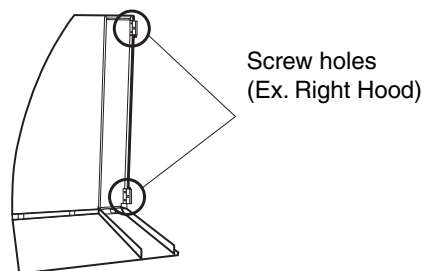


How to install

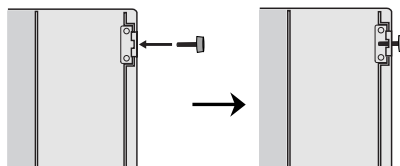
1. Put screws into the left and right hoods.

NOTE

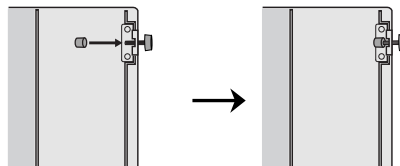
- Attach the hood by using the specified screws with referring to the labels on the packing bags of the screws.
- By over-driving the screws, the hood cannot attach into the monitor.



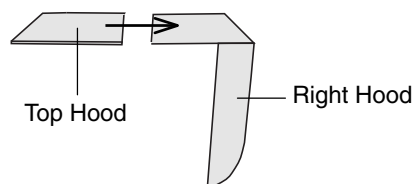
- (1) Put screws into the screw holes (2 places for each) and drive it until the half-length of screws coming up from the screw holes.



- (2) Put the screw caps on each tips of screws.



2. Attach the top hood to either the left or right hood before attaching to the monitor.

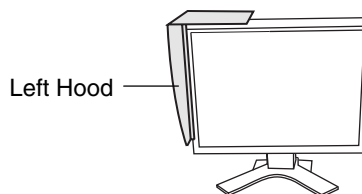


3. Attach the hood to the monitor.

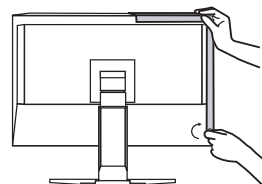
NOTE

- Attaching one hood and tightening the screws should be completed before going on to the other hood.

- (1) Attach the left hood to the monitor from above and slide it from the side of the monitor until the hood is firmly positioned against the monitor.

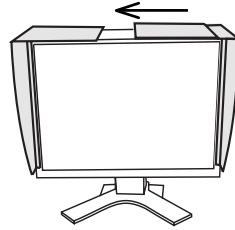


- (2) Hold the left hood and tighten two screws on each side.



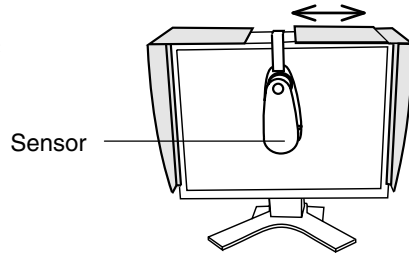
- (3) Attach the right hood in the same way.

4. Slide the top hood to close.



Calibration

When calibrating the monitor, the sensor of the measurement device can be attached by sliding the top cover without removing the hood.

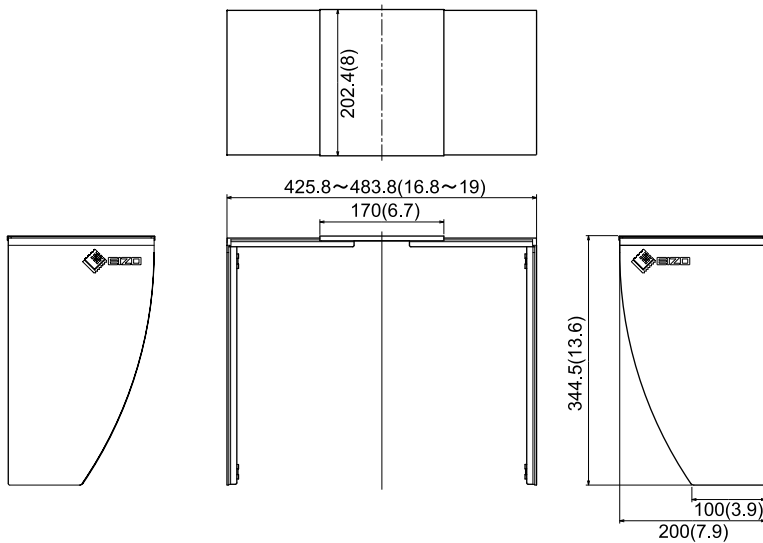


Specifications

Dimensions(W) × (H) × (D) (Not including projected part)	425.8 (16.8) ~ 483.8 (19) × 344.5 (13.6) × 202.4 (8) mm (inch)
Weight	860g (1.9lbs)

Dimensions

Unit: mm (inch)



NOTE

故障/修理に関するお問い合わせ先

最寄りの下記エイゾーサポートにお問い合わせください。

エイゾーサポート仙台

〒980-0811 仙台市青葉区一番町2-3-22 仙台ビルディング 1号館
TEL (022) 212-8750 FAX (022) 212-8758

エイゾーサポート東京

〒143-0006 東京都大田区平和島6-1-1
東京流通センター 物流ビル B棟4F BW4-1
TEL (03) 5767-7726 FAX (03) 5767-7727

エイゾーサポート名古屋

〒460-0003 名古屋市中区錦1-6-5 名古屋錦第一生命ビル
TEL (052) 232-0151 FAX (052) 232-7705

エイゾーサポート北陸

〒926-8566 石川県七尾市藤橋町ア部8-2
TEL (0767) 52-7700 FAX (0767) 52-0202

エイゾーサポート大阪

〒660-0862 尼崎市開明町2-11 神鋼建設ビル
TEL (06) 6414-3770 FAX (06) 6414-3771

エイゾーサポート福岡

〒810-0004 福岡市中央区渡辺通3-6-11 福岡フコク生命ビル
TEL (092) 762-2170 FAX (092) 715-7781

営業時間：月～金 9：30～17：30（祝祭日及び弊社休日を除く）

廃棄について

- 個人のお客様
自治体の指示に従って廃棄してください。
- 法人のお客様
産業廃棄物として処理してください。

EIZO NANAO CORPORATION

153 Shimokashiwano, Hakusan, Ishikawa 924-8566 Japan

EIZO NANAO TECHNOLOGIES INC.

5710 Warland Drive, Cypress, CA 90630, USA

株式会社ナナオ

〒924-8566 石川県白山市下柏野町153番地

<http://www.eizo.com>

Copyright© 2006 EIZO NANAO CORPORATION All rights reserved.

Download from www.Somanuals.com. All Manuals Search And Download.

2nd Edition-October, 2006
Printed in Japan.

This document is printed on recycled chlorine free paper.

00N0L271B1
(U.M-CH2)

Free Manuals Download Website

<http://myh66.com>

<http://usermanuals.us>

<http://www.somanuals.com>

<http://www.4manuals.cc>

<http://www.manual-lib.com>

<http://www.404manual.com>

<http://www.luxmanual.com>

<http://aubethermostatmanual.com>

Golf course search by state

<http://golfingnear.com>

Email search by domain

<http://emailbydomain.com>

Auto manuals search

<http://auto.somanuals.com>

TV manuals search

<http://tv.somanuals.com>