

iHome wireless multimedia keyboard & laser mouse

Model # IH-K225LB

Product Knowledge Base



Frequently Asked Questions (FAQs)

1. What is included in the box?

- Wireless multimedia keyboard
- Wireless laser mouse
- Mini USB receiver
- 4 AAA Duracell batteries
- Installation CD
- User manual

2. What are the system requirements?

- PC
- Windows 2000, Windows XP or Windows Vista
- CD-ROM drive
- USB Port

3. Where can I download the latest driver?

Visit www.life-works.com/drivers

4. Where can I find warranty information?

Visit www.life-works.com/warranty

5. How to connect the mouse and keyboard?

- Insert 2 AAA batteries into the keyboard battery compartment.
- Insert 2 AAA batteries into the mouse battery compartment.

- Connect the mini USB receiver to an available USB port on your computer.
- ❖ The keyboard and the mouse automatically connect to the mini USB receiver.
- Start using the keyboard and mouse.

6. How to install the software?

- Insert the installation CD into your computer.
- On the screen that appears, click **Install**.
- An **InstallShield Wizard** dialog box appears, click **Next**.
- The **Choose Destination Location** dialog box displays. Click **Next** to accept the default installation location.
- Once the installation is complete, restart the computer when prompted.
- ❖ When the computer restarts, the mouse and keyboard icons display in the system tray (near the time bar on the lower right of your desktop).

7. How to customize the mouse buttons?

- Double-click the mouse icon in the system tray.
- Select the **Config of mouse button** tab.
- Click the drop-down to select an action for each button.
- Drag the slider to set the double-click speed.
- Click **OK** to accept the changes and exit.

8. How to customize the mouse scroll wheel?

- Double-click the **mouse icon** in the system tray.
- Select the **Config of mouse button** tab.

- Select the **speed of the wheel scroll** and choose how many lines should scroll when the wheel is rotated one click, or select **For Pages** to scroll a whole page with each click
- ❖ To set the mouse wheel to adjust the audio volume instead, select Adjust of the volume and adjust the slider to determine how fast the volume changes when you rotate the wheel.
- Click **OK** to accept the changes and exit

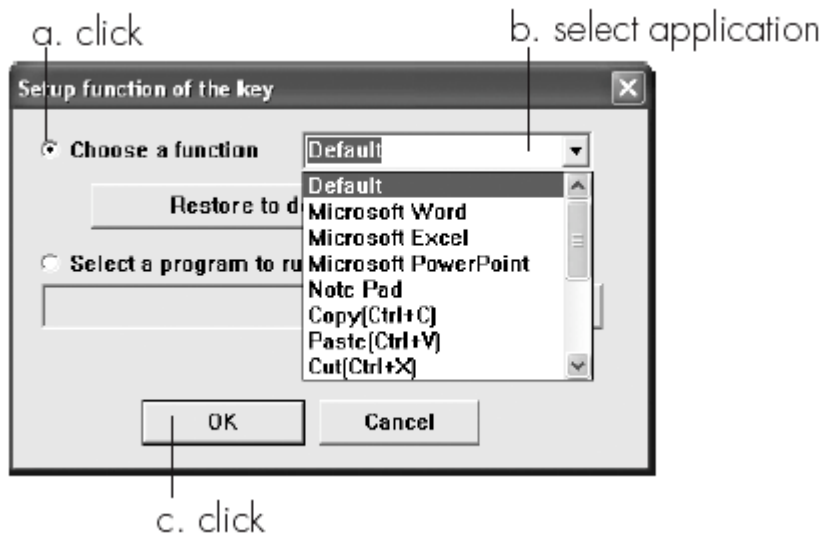
Note: To use the horizontal (side-to-side) mouse scroll function on a Windows XP computer you must install the supplied software. Windows Vista users do not have to install the software to use the horizontal scroll function.

9. How to customize the keyboard?

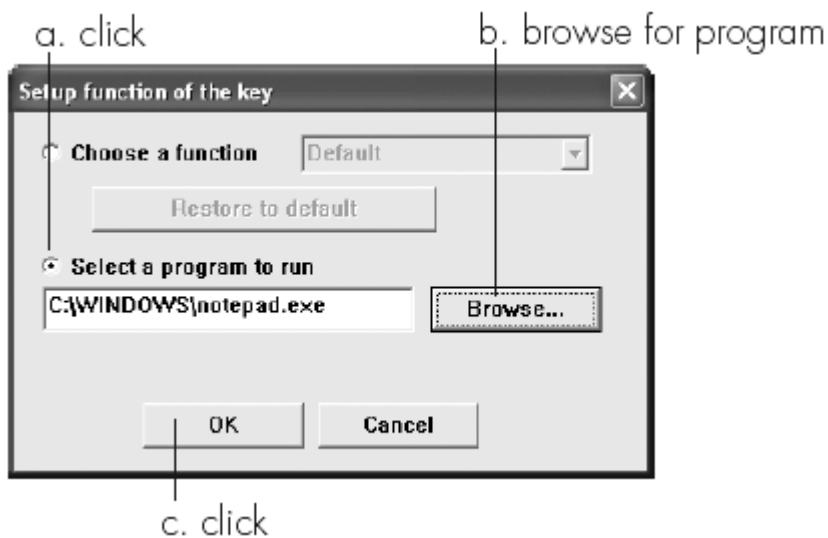
- ❖ Your keyboard has four programmable application buttons.
- Double-click the **keyboard icon** in the system tray.
- To change the action for programmable button, click the corresponding icon.



- Select **Choose a function**, then select an application from the drop-down list.



- To have the button run an application not included in the list, select the **Select a program to run** option, then click **Browse** to navigate to the desired application.



Click **OK** to accept the changes.

Troubleshooting Steps

1. My keyboard or mouse do not work at setup

- Ensure the mini USB receiver is connected to your computer.
- Move the mouse or keyboard closer to the mini USB receiver.
- Check that batteries are inserted correctly in the battery compartment for the keyboard or mouse.
- Disconnect the mini USB receiver, and then reconnect it.
- Connect the mini USB receiver to a different USB port. Try a USB port on the computer, not a USB hub.

2. My keyboard or mouse has stopped working

- Check that the batteries are good. If necessary replace the batteries.
- Ensure the laser sensor on the mouse is clean.

2. Why the mouse low battery indicator continues to flash?

- Install a fresh battery.

Product Operating Tips

- Your keyboard and mouse will operate from as far away as 30 ft.(10m) from your computer.
- Customize the programmable buttons on the keyboard and mouse for greater functionality.
- Your mouse has two sensitive settings: standard mode and high-performance mode. High-performance allows cursor to move very quickly and is useful for activities such as gaming. Press **DPI** button (behind the scroll wheel) to switch from standard mode to high-performance mode and back.

- The scroll wheel is also a button. Press the scroll wheel (without scrolling it) to automatically scroll a document or web page, then move your mouse up/down(vertical scrolling) or left/right(horizontal scrolling) to set the automatic scroll speed.

For questions regarding your iHome computer accessory, please visit our website at www.life-works.com or call 1-877-Life-540.

2009 © LifeWorks Technology Group LLC.

iHome™ is a trademark of SDI Technologies Inc. used under license.

Windows Vista® is either a registered trademark or trademark of Microsoft Corporation in the United States and/or other countries.

Mac® is a trademark of Apple Inc., registered in the U.S. and other countries.

All other brands and logos are trademarks of their respective companies.

Free Manuals Download Website

<http://myh66.com>

<http://usermanuals.us>

<http://www.somanuals.com>

<http://www.4manuals.cc>

<http://www.manual-lib.com>

<http://www.404manual.com>

<http://www.luxmanual.com>

<http://aubethermostatmanual.com>

Golf course search by state

<http://golfingnear.com>

Email search by domain

<http://emailbydomain.com>

Auto manuals search

<http://auto.somanuals.com>

TV manuals search

<http://tv.somanuals.com>