

# coffeemaker

## owners manual

SAVE THIS USE AND CARE BOOK



*ham*

**Hamilton Beach.**

Please call 1-800-851-8900 with questions

## **⚠ WARNING**

### **Shock Hazard**

- Do not immerse this appliance in water or other liquid.
- This appliance has a polarized plug (one wide blade) that reduces the risk of electrical shock. The plug fits only one way into a polarized outlet. Do not defeat the safety purpose of the plug by modifying the plug in any way or using an adaptor. If the plug does not fit, reverse the plug. If it still does not fit, have an electrician replace the outlet.

## **IMPORTANT SAFEGUARDS**

When using electrical appliances, basic safety precautions should always be followed to reduce the risk of fire, electric shock, and/or injury to persons, including the following:

- Read all instructions.
- Do not touch hot surfaces. Use handles or knobs. Care must be taken, as burns can occur from touching hot parts or from spilled, hot liquid.
- To protect against electric shock, do not place cord, plug or coffeemaker in water or other liquid.
- Close supervision is necessary when any appliance is used by or near children.
- Unplug from outlet when either the coffeemaker or clock is not in use and before cleaning. Allow to cool before putting on or taking off parts and before cleaning the appliance.
- Coffeemaker must be operated on a flat surface away from the edge of counter to prevent accidental tipping.
- Do not operate any appliance with a damaged cord or plug, or after the appliance malfunctions or is dropped or damaged in any manner. Call our toll-free customer service number for information on examination, repair, or adjustment.
- The use of accessory attachments not recommended by Hamilton Beach/Proctor-Silex, Inc. may cause injuries.
- Do not use outdoors.
- Do not let cord hang over edge of table or counter or touch hot surfaces, including stove.
- The carafe is designed for use with this coffeemaker. It must never be used on a range top or in a microwave oven.
- Do not set a hot carafe on a wet or cold surface.
- Do not use a cracked carafe or one with loose or weakened handle.
- Do not clean carafe or hot plate with cleansers, steel wool pads, or other abrasive material.
- Be certain carafe lid is securely in place during brew cycle and when pouring coffee. Do not use force when placing lid on carafe.
- To disconnect coffeemaker, turn controls to OFF, then remove plug from wall outlet.
- Do not place coffeemaker on or near a hot gas or electric burner or in a heated oven.
- Warning: To reduce the risk of fire or electric shock, do not remove the bottom cover. No user serviceable parts are inside. Repair should be done by authorized service personnel only.
- Do not use appliance for other than intended purpose.

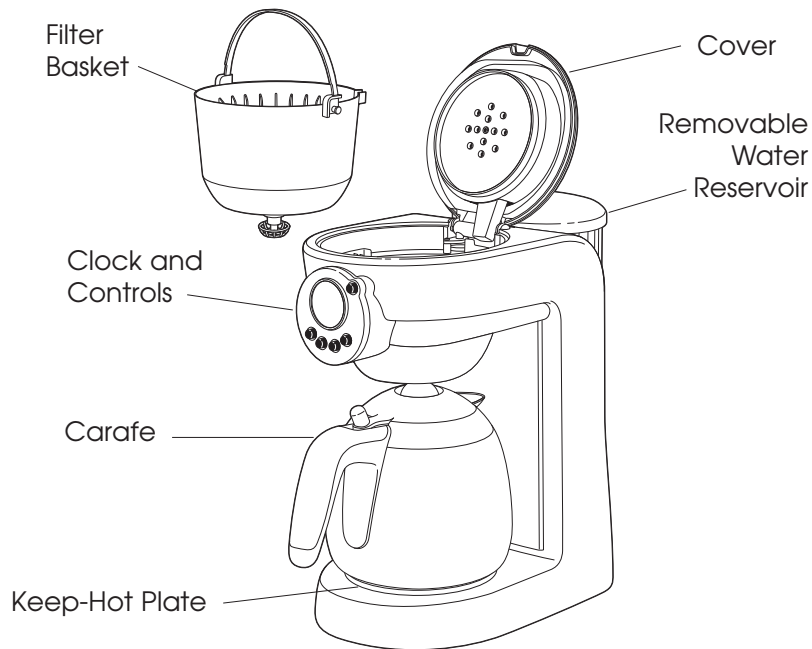
## **SAVE THESE INSTRUCTIONS**

**OTHER CONSUMER SAFETY INFORMATION**

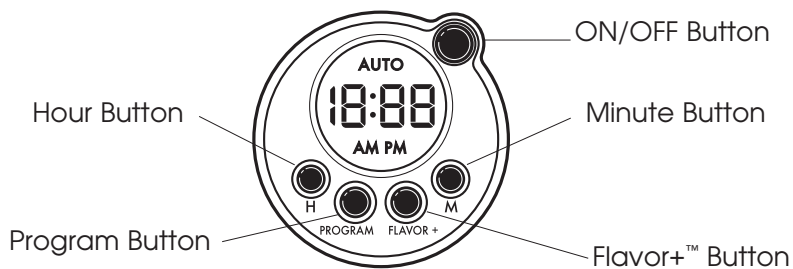
**This appliance is intended for household use only.**

The length of the cord used on this appliance was selected to reduce the hazards of becoming tangled in, or tripping over, a longer cord. If a longer cord is necessary, an approved extension cord may be used. The electrical rating of the extension cord must be equal to or greater than the rating of the coffeemaker. Care must be taken to arrange the extension cord so that it will not drape over the countertop or tabletop where it can be pulled on by children or accidentally tripped over.

## PARTS AND FEATURES

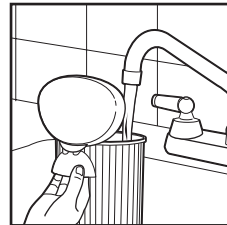
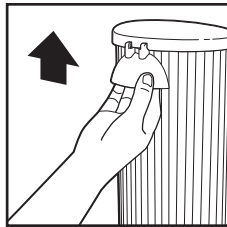


## CLOCK AND CONTROLS

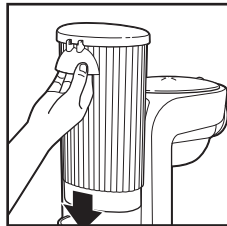


## HOW TO MAKE COFFEE

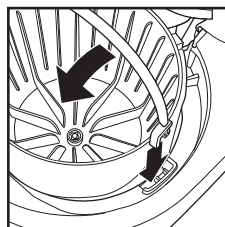
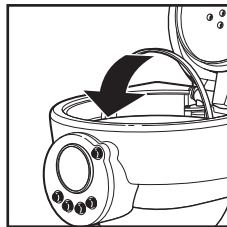
- To ensure best possible taste, clean unit by brewing at least one complete cycle using water only (no coffee).
- Plug in coffeemaker. The clock will flash until time is set.
- Press **H** to set current hour with AM or PM. Press **M** to set current minutes. The clock is now set.
- Remove water reservoir.
- Fill water reservoir.



- Replace water reservoir. **It must be fully seated.**



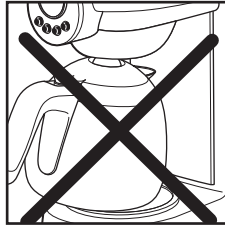
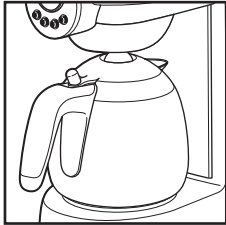
- **Make sure filter basket is securely locked into position to reduce risk of filter basket overflow.**



- Place a disposable cupcake-style paper filter in filter basket. A permanent filter may also be used.
- Use a good quality filter. The sides of the filter should be upright against the sides of the filter basket to avoid filter collapsing.
- For each cup of coffee being made, place one level scoop or tablespoon of medium-ground automatic drip coffee into filter. Lower top cover to close.
- To avoid basket overflow when brewing decaffeinated coffee, add less coffee per cup (3/4 full scoop or 3/4 tablespoon per cup) OR brew in the Flavor+™ mode.

## HOW TO MAKE COFFEE (CONT)

- Make sure the carafe is fully inserted or centered on the Keep-Hot Plate. This will reduce the risk of filter basket overflow during brewing.



- If you prefer a fuller-bodied, stronger-flavored coffee, select the Flavor+™ button before brewing. For regular coffee, do not select this feature.
- Press ON/OFF button once to brew coffee now and the light will glow red. To brew later, see "To Program Automatic Brew."

NOTE: To serve coffee during the brewing cycle, remove carafe and pour a cup. By removing the carafe, the flow of coffee from the bottom of the filter basket will stop until carafe is placed back on center of Keep-Hot plate.

### CAUTION

#### Burn Hazard

Return Carafe to Keep-Hot Plate and ensure Auto Pause 'n Serve is engaged within 15 seconds. Hot water continues to flow into the Filter Basket when the Auto Pause 'n Serve feature is used. Overflowing coffee and hot water are a burn hazard.

- The unit will shut off automatically after two hours. When finished, unplug from outlet.
- If filter basket overflow occurs, unplug the coffeemaker and allow the coffee in the filter basket to cool before removing the filter basket.

## FLAVOR+™ FEATURE

The Flavor+™ cycle optimizes coffee flavor and aroma by more thoroughly extracting coffee flavor from the grounds. This feature extends brewing time versus the regular coffee brewing cycle. Before brewing, press the Flavor+™ button, then press the ON/OFF button. After 30 seconds, the coffeemaker will begin to brew and then cycle on and off (every 30 seconds) for the first 8 minutes of brewing cycle. It will then complete the cycle for any remaining time as a continuous operation.

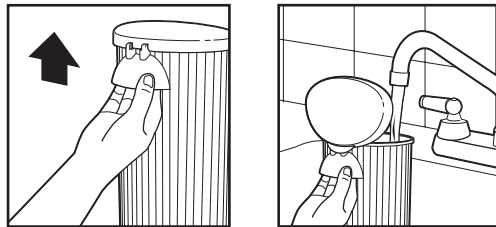
## HOW TO PROGRAM AUTO BREW

### IMPORTANT NOTES:

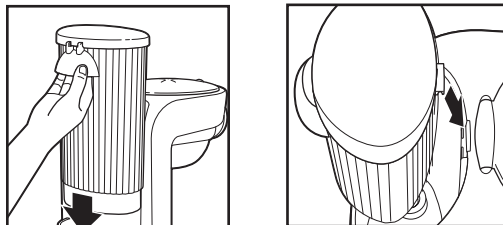
- Automatic Brew must be programmed each time it is used.
- Make sure you have placed the desired amount of water and coffee in the unit before using the Automatic Brew feature.
- Make sure an EMPTY carafe is inserted on the keep-hot plate.
- Make sure the clock is set for correct time of day.
- Press and hold the **Program** button until digits begin to flash.
- While still pressing the **Program** button, with another finger press the **H** button to set hours and then press the **M** button to set minutes, noting AM or PM until the desired brew time is displayed.
- Release the **Program** button. Digits will stop flashing and return to displaying the time of day.
- To have coffeemaker automatically begin brewing at the preset time, press **Program** button momentarily. The **Program** button will glow red to indicate Automatic Brew is set and coffeemaker is ready to begin brewing at the specified time. "Auto" will appear in the display.
- To change Automatic Brew time, press and hold **Program** button until digits begin to flash. Follow the directions above to set the new Automatic Brew time.

## REMOVABLE RESERVOIR

- Wash before first use in hot, soapy water. The reservoir can be removed for easy filling or occasional washing.
- Lift out removable reservoir and fill with water to desired level.



- Carefully place removable reservoir back into the coffeemaker's



reservoir holder. **Make sure removable reservoir is fully seated for proper water flow.**

**NOTE:** Ensure the reservoir's top hook catches and inserts into the back of coffeemaker.

## OPTIONAL ACCESSORIES

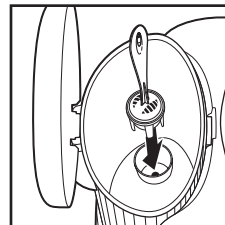
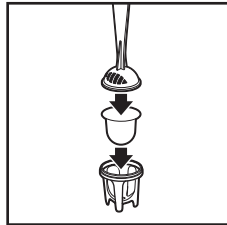
### Cleaner and Descaler (part #990024700)

Coffeemaker cleaner and descaler prevents hard water deposits that affect the coffeemaker's brewing performance and removes old coffee buildup to improve coffee's taste. Usage frequency depends on local water quality. Use cleaner at least once a month.

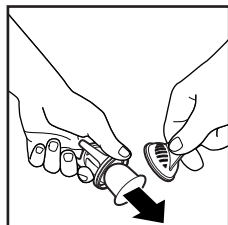
### Water Filter (part #80674)

Water filtration plays an important role in obtaining a delicious cup of coffee.

- Before first use, soak water filter in cold tap water for 15 minutes. Then rinse under cold running tap water for 15 seconds.
- Insert filter in base. Snap lid onto base.
- Place filter and filter holder in reservoir.



- Replace after 60 brew cycles of coffee. Set your replacement month by aligning the arrow with the month you expect will represent 60 brew cycles.
- To replace, pull up on lid of filter holder while holding filter base, turn filter base to allow filter to drop out.



**To Order Optional Accessories Call:**  
**1-800-851-8900**  
 or online:  
**hbaccessories.com**

## CLEANING INSTRUCTIONS

To maintain the performance of your coffeemaker, **clean it once a month**. Periodic cleaning removes mineral deposits that slow down brew time and result in bitter coffee taste.

### To Clean Inside of Coffeemaker using Cleaner and Descaler:

- Remove water filter and water filter holder (optional feature).
- Plug in and set the clock.
- Place empty carafe on Keep-Hot Plate. Put the empty filter basket in place. **Do not add coffee into filter basket.**
- Use any commercially-available coffeemaker cleaner and descaler intended for home use. Follow package directions. After cleaning, thoroughly rinse coffeemaker by brewing twice with water only.

To order a cleaner, call:

**1-800-851-8900 or online: [hbaccessories.com](http://hbaccessories.com)**

**NOTE:** Commercially-available brands of descaler include CleanCaf.™

### To Clean Inside of Coffeemaker using White Vinegar:

- Remove water filter and water filter holder (optional feature).
- Plug in and set the clock.
- Place empty carafe on Keep-Hot Plate. Insert filter basket. **Do not add coffee into filter basket.**
- Press the **ON/OFF** button once to turn on. The brewing light will glow. After 20 seconds, press the **ON/OFF** button to turn off.
- Pour one pint of plain white vinegar into the reservoir.
- Wait 20-30 minutes to allow the vinegar to clean. Then turn on again. When the brew cycle is finished, wait for unit to cool.
- Empty carafe and rinse. Pour one carafe of cold tap water into the reservoir. Place carafe on Keep-Hot Plate
- Press **ON/OFF** button once. When the brew cycle is complete, empty the carafe. Allow the coffeemaker to cool, then repeat this step with one more carafe of cold tap water.
- Turn off when completed.
- Wash carafe and filter basket before making beverage.

### To Clean Carafe, Filter Basket, and Removable Reservoir:

- Wash carafe in hot, soapy water. **DO NOT put in dishwasher.**
- Wash filter basket by hand in hot, soapy water or in the top rack of dishwasher.
- Wash removable reservoir in hot, soapy water.

### To Clean Exterior of Coffeemaker:

Unplug coffeemaker. Wipe the exterior with a soft cloth and warm, soapy water. Do not use abrasive cleaners as they will scratch the finish of the product.



## CARAFE SAFETY PRECAUTIONS



This symbol alerts you to the potential danger for personal injury if you fail to read and follow these safety precautions.



This symbol reminds you that glass is fragile and can break which could result in personal injury.

- **Do not place carafe in dishwasher.**
- Do not use a cracked carafe or a carafe having a loose or weakened handle.
- This carafe is designed to be used only on the Keep-Hot Plate of your coffeemaker. Do not use on a gas or electric rangetop, or in a microwave or conventional oven.
- To avoid breakage, handle carafe with care. Avoid impact. Glass will break as a result of impact. Use care when filling with water to avoid hitting faucet.
- Do not place hot carafe on cool or wet surface. Allow to cool before washing or adding liquids.
- Do not set empty carafe on a hot heating surface.
- Do not clean with steel wool pads, abrasive cleanser, or any other materials that may scratch.
- Do not place hands inside carafe. When handling, be careful if wearing any hand jewelry, especially diamond rings. Jewelry can scratch the glass, which increases possibility of breakage.
- Do not bump, scratch, or boil dry the carafe.
- Discard carafe if it is cracked, scratched, or heated while empty for an extended period of time.
- To avoid accidents, do not pour in the direction of people.
- If stirring in the carafe, use only wooden, plastic, or rubber utensils. Do not use metal utensils.
- Follow the above safety precautions carefully to avoid serious burn injuries which may result if breakage occurs while carafe holds heated liquids.

## TROUBLESHOOTING

### **Filter basket overflows or coffee brews slowly.**

- Carafe not securely placed on Keep-Hot Plate.
- Carafe removed during brewing for more than 15 seconds and not placed securely back on Keep-Hot plate.
- Filter basket not locked into position.
- Coffeemaker needs cleaning. Clean the coffeemaker at least every 30 days to maintain proper performance. See page 8.
- Excessive amounts of coffee. One scoop or level tablespoon of ground coffee per cup is recommended.
- Coffee ground too finely (not automatic drip grind).
- Poor quality paper filter.

### **Coffee tastes bad.**

- Coffeemaker needs cleaning. Clean the coffeemaker at least every 30 days to maintain proper performance. See page 8.
- Coffee ground other than automatic drip.
- Coffee-to-water ratio unbalanced. Use one scoop or level tablespoon of coffee per cup. Adjust for personal preference.
- Poor coffee quality and freshness.
- Poor water quality (use filtered or bottled water).

### **Coffee not brewing/unit will not turn on.**

- Mineral deposits have built up. Clean the coffeemaker at least every 30 days to maintain proper performance. See page 8.
- Water reservoir is empty.
- Unit is unplugged.
- Power outage.
- Power surge. Unplug then plug the unit back in.
- Clock requires reset after power outage.

### **Longer than normal brew time.**

- Mineral deposits have built up. Clean the coffeemaker at least every 30 days to maintain proper performance. See page 8.

## CUSTOMER SERVICE

If you have a question, call our customer service number. Before calling, please note the model, type, and series numbers. These numbers can be found on the bottom of your appliance and will help us answer your question.

### LIMITED WARRANTY

This product is warranted to be free from defects in material and workmanship for a period of one (1) year for Hamilton Beach products and Michael Graves by Hamilton Beach products from the date of original purchase, except as noted below. During this period, we will repair or replace this product, at our option, at no cost. THE FOREGOING WARRANTY IS IN LIEU OF ANY OTHER WARRANTY OR CONDITION, WHETHER EXPRESS OR IMPLIED, WRITTEN OR ORAL INCLUDING, WITHOUT LIMITATION, ANY STATUTORY WARRANTY OR CONDITION OF MERCHANTABILITY OR FITNESS FOR A PARTICULAR PURPOSE. ANY LIABILITY IS EXPRESSLY LIMITED TO AN AMOUNT EQUAL TO THE PURCHASE PRICE PAID, AND ALL CLAIMS FOR SPECIAL, INCIDENTAL AND CONSEQUENTIAL DAMAGES ARE HEREBY EXCLUDED. There is no warranty with respect to the following, which may be supplied with this product, including without limitation: glass parts, glass containers, cutter/strainers, blades, seals, gaskets, clutches, motor brushes, and/or agitators, etc. This warranty extends only to the original consumer purchaser and does not cover a defect resulting from abuse, misuse, neglect including failure to clean product regularly in accordance with manufacturer's instructions, use for commercial purposes, or any use not in conformity with the printed directions. This warranty gives you specific legal rights, and you may also have other legal rights which vary from state to state, or province to province. Some states or provinces do not allow limitations on implied warranties or special, incidental or consequential damages, so the foregoing limitations may not apply to you.

If you have a claim under this warranty, DO NOT RETURN THE APPLIANCE TO THE STORE! Please call our CUSTOMER SERVICE NUMBER. (For faster service please have model, series, and type numbers ready for operator to assist you.)

### CUSTOMER SERVICE NUMBER

1-800-851-8900

**Web site address:**

**hamiltonbeach.com**

**KEEP THIS NUMBER FOR FUTURE REFERENCE!**

coffeemaker

---



## Michael Graves

Michael Graves, recipient of the National Medal of Arts and the American Institute of Architects' Gold Medal, has been at the forefront of architecture and design since founding his practice in Princeton, New Jersey in 1964. By integrating architecture, interior design, product design and graphic design, his unique practice has developed a powerful lifestyle brand with an impressive portfolio of projects throughout the world. His design practice, Michael Graves Design Group, has created products that range from building components to consumer products for home and office, including the Michael Graves Design™ collection for Target.

*Graves*

---

840153800

## Free Manuals Download Website

<http://myh66.com>

<http://usermanuals.us>

<http://www.somanuals.com>

<http://www.4manuals.cc>

<http://www.manual-lib.com>

<http://www.404manual.com>

<http://www.luxmanual.com>

<http://aubethermostatmanual.com>

Golf course search by state

<http://golfingnear.com>

Email search by domain

<http://emailbydomain.com>

Auto manuals search

<http://auto.somanuals.com>

TV manuals search

<http://tv.somanuals.com>